

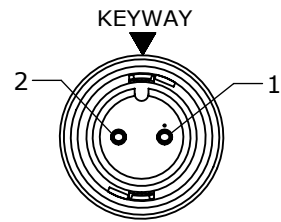
**NOTES:**

1. FINISHED CABLE ASSEMBLY TO BE COILED
2. OVERMOLD BOOT MATERIAL: PVC, BLACK
3. ELECTRICAL TEST: 100% CONTINUITY

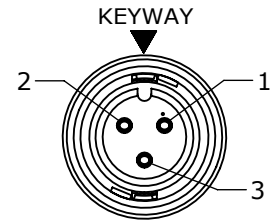
ASS'Y P/N	NO. OF POS.	"X" DIM.
CARA62802S07990	2	6 FT. 7 IN. ±2 IN. [2M]
CARA62803S07990	3	
CARA62804S07990	4	
CARA62805S07990	5	
CARA62806S07990	6	
CARA62807S07990	7	
CARA62808S07990	8	
CARA6280XSXXX90		

CABLE LENGTH IN "INCHES"

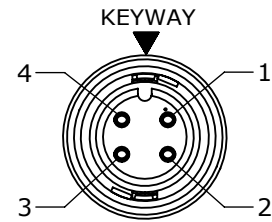
NO OF POSITIONS



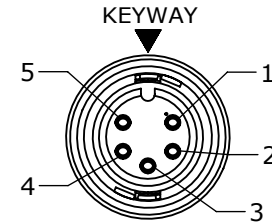
**FACE VIEW**  
P/N: CARA62802SXXX90



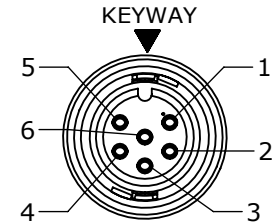
**FACE VIEW**  
P/N: CARA62803SXXX90



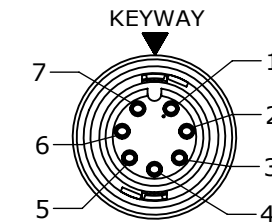
**FACE VIEW**  
P/N: CARA62804SXXX90



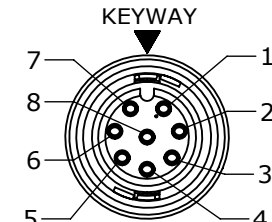
**FACE VIEW**  
P/N: CARA62805SXXX90



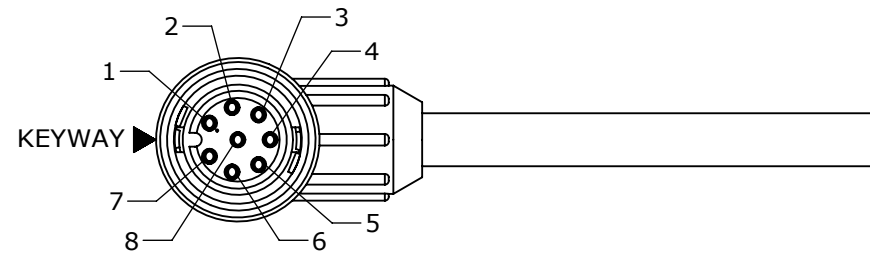
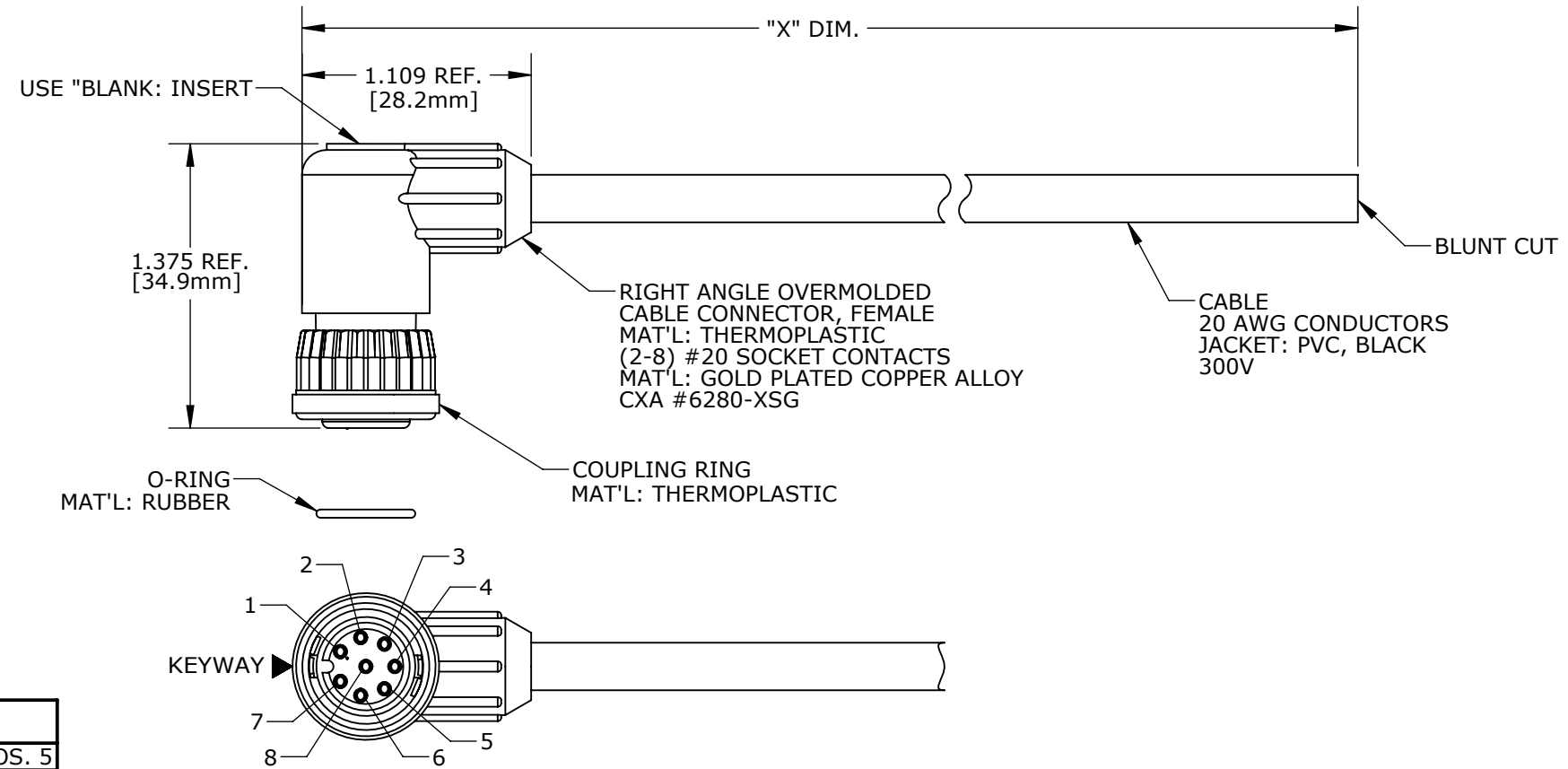
**FACE VIEW**  
P/N: CARA62806SXXX90



**FACE VIEW**  
P/N: CARA62807SXXX90



**FACE VIEW**  
P/N: CARA62808SXXX90



**END "A"**  
FACE VIEW  
P/N: CARA62808SXXX90

**CUSTOMER APPROVAL**

THIS DOCUMENT CONTAINS CONFIDENTIAL INFORMATION PROPRIETARY TO CONXALL CORPORATION. ANY REPRODUCTION, DISCLOSURE, OR USE OF THIS DOCUMENT / INFORMATION IS EXPRESSLY PROHIBITED UNLESS AUTHORIZED IN WRITING BY CONXALL CORPORATION.

APPROVED BY: \_\_\_\_\_

DATE: \_\_\_\_\_

ASSY P/N	CABLE	COLOR CODE END "A"
CARA62802SXXX90	2/20 AWG O.D. 0.215 REF	COLOR CODE
		POS. 1 POS. 2
CARA62803SXXX90	3/20 AWG O.D. 0.220 REF	BLK WHT
		POS. 1 POS. 2 POS. 3
CARA62804SXXX90	4/20 AWG O.D. 0.235 REF	BLK WHT GRN
		POS. 1 POS. 2 POS. 3 POS. 4
CARA62805SXXX90	5/20 AWG O.D. 0.255 REF	BLK WHT GRN RED
		POS. 1 POS. 2 POS. 3 POS. 4 POS. 5
CARA62806SXXX90	6/20 AWG O.D. 0.275 REF	BLK WHT GRN RED BLU VIO
		POS. 1 POS. 2 POS. 3 POS. 4 POS. 5 POS. 6
CARA62807SXXX90	8/20 AWG O.D. 0.300 REF	BLK WHT GRN RED BLU VIO GRY
		POS. 1 POS. 2 POS. 3 POS. 4 POS. 5 POS. 6 POS. 7
CARA62808SXXX90	8/20 AWG O.D. 0.300 REF	BLK WHT GRN RED BLU VIO GRY BRN
		POS. 1 POS. 2 POS. 3 POS. 4 POS. 5 POS. 6 POS. 7 POS. 8

DIMENSIONS IN BRACKET [ ] ARE METRIC.

**RoHS COMPLIANT**

REV.	INIT.	DATE	DESCRIPTION
B	AN	10-27-16	UPDATED MANUFACTURING DRAWING PER ECR 9122
A	AN	06-30-16	DRAWING CREATED PER DOR 16-7414JP

<p>ALL INFORMATION ILLUSTRATED IS THE PROPERTY OF "CONXALL CORPORATION". UNAUTHORIZED DUPLICATION OR DISTRIBUTION OF THIS DOCUMENT IS PROHIBITED.</p> <p>ALL UNITS ARE IN FEET, INCHES, FRACTION OF INCHES AND DECIMALS.</p> <p>— CRITICAL CHARACTERISTIC FLAG PER SPEC. XXXX</p>	<p>ORIG. DRAWN BY: AN</p> <p>DATE: 05-26-16</p> <p>CHECKED BY:</p>	<p>601 E. WILDWOOD VILLA PARK, IL 60181</p>
<p>APPROVED BY:</p>	<p>SCALE: NTS</p> <p>SIZE: B</p> <p>SHEET: 1 OF 1</p> <p>FILE: CARA6280XSXXX90</p> <p>DIRECTORY: SLW</p>	
<p>TITLE: CABLE ASSEMBLY (2-8) #20 SOCKET CONTACTS MINI-CON-X, R. ANGLE STANDARD PRODUCT</p>		<p>CUSTOMER: STANDARD PRODUCT</p>
<p>PART NUMBER: CARA6280XSXXX90</p>		<p>REV B</p>

CUSTOMER PRINT

PART NUMBER: CARA6280XSXXX90