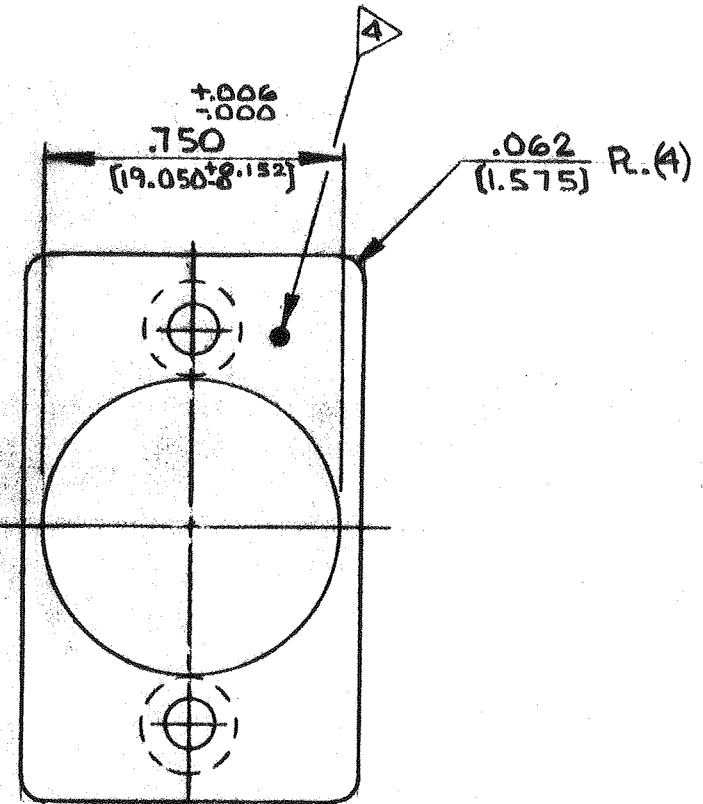
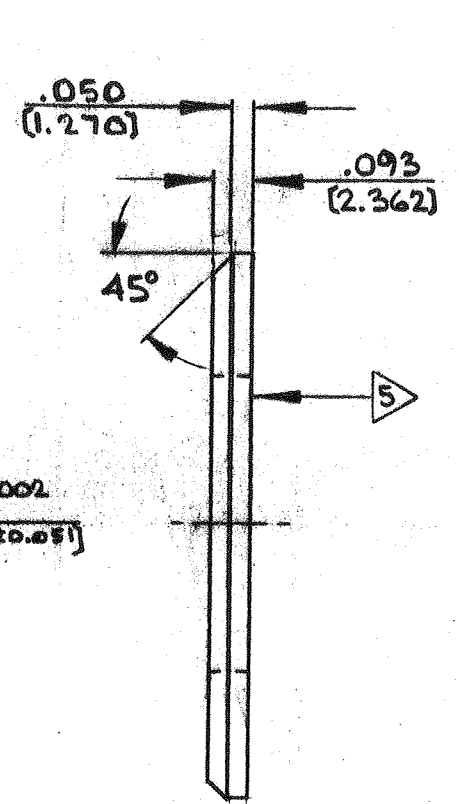
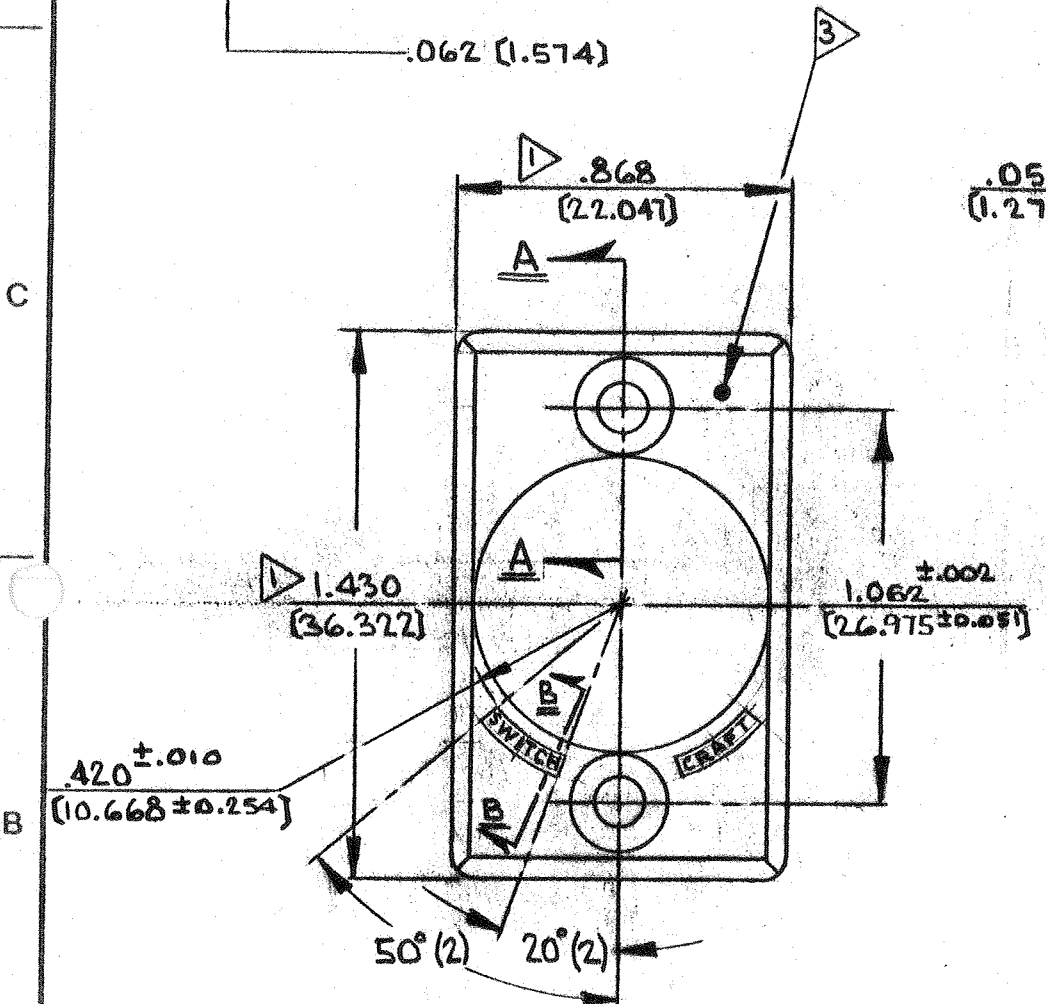
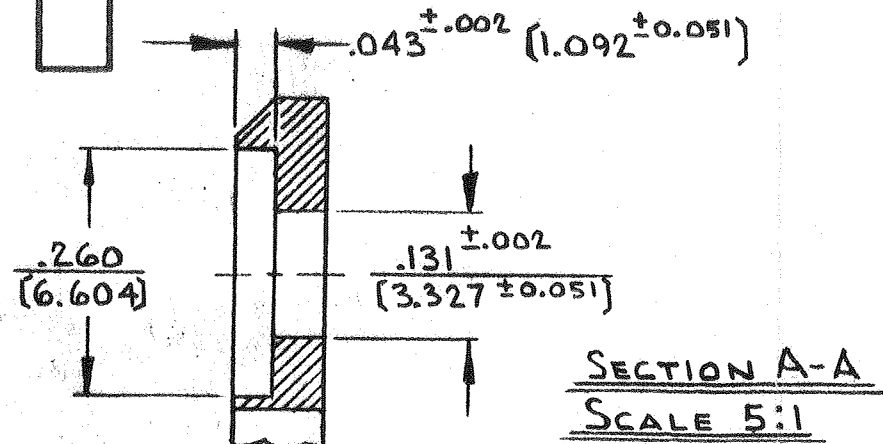
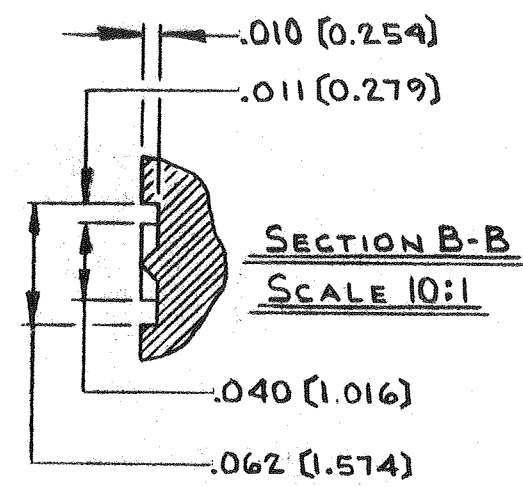
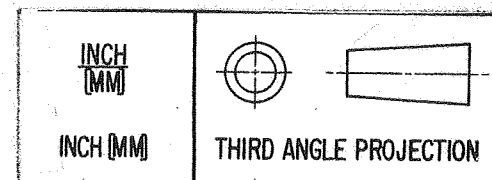


ISS	ZONE	SYM	REVISION	BY	DATE
0			W. E. T. 1978		
1			REL. FOR PRODUCTION ADDED GG, P, BG	FH	5/1/78



COLOR No.	COLOR	CAT. LIST	R. E. L.
8G	GRAY	11	✓
6G	BLUE	04	✓
4B	YELLOW	08	✓
9B	WHITE	05	✓
5C	GREEN	03	✓
0A	BLACK	02	✓
2E	RED	01	✓



- 1. CENTERLINE DETERMINED BY FEATURES NOTED. ALL OTHER FEATURES SHOWN ON, OR SYMMETRICAL WITH, THE CENTERLINE TO BE CENTERED WITHIN .006 (0.152), TOTAL, UNLESS OTHERWISE NOTED.
- 2. TOLERANCES INCLUDE DRAFT ALLOWANCES
- 3. FRONT FACE TO HAVE A SMOOTH MATTE FINISH, FREE OF SURFACE DEFECTS.
- 4. CAVITY NUMBERS INDICATED BY DOT MUST BE RECESSED & NOT EXTEND ABOVE SURFACE.
- 5. THIS SURFACE TO BE FLAT WITHIN .008 (0.203).

★ STAR SYMBOL DENOTES CRITICAL DIMENSION. SEE S/C ENGINEERING STANDARD ES-0001.

THIS DRAWING DESCRIBES A DESIGN CONSIDERED PROPRIETARY IN NATURE, DEVELOPED AND MANUFACTURED BY SWITCHCRAFT, INC., AND IS RELEASED ON A CONFIDENTIAL BASIS FOR IDENTIFICATION PURPOSE ONLY.

UNLESS OTHERWISE SPECIFIED:

1. DECIMAL DIMENSIONS ± .005 (0.127)	DRAWN BY FGD	DATE 3-27-78	FINISH SEE TABLE ABOVE
3. ANGLES ± 1/2°	CHECKED BY JRH	DATE 3-29-78	PER FINISH SPEC. NO.
4. ALL DIA'S CONCENTRIC WITHIN .005 T.I.R. (0.127)	APPROVED BY R.V.	DATE 6-15-78	MATERIAL POLYCARBONATE
5. ALL DIMENSIONS IN INCHES	SCALE 2:1	FIRST USED ON Y*M	LEXAN 141 PER MAT. SPEC. NO. 041/P001
6. FOR THREADS USE UNIFIED PLUG AND RING GAGES ONLY.	NAME ESCUTCHEON,	PART NO. 417E110	ISSUE 1
7. REMOVE ALL BURRS.	PLASTIC	SHEET OF	
8. PART TO BE FABRICATED AS SPECIFIED. MAKE NO DIMENSIONAL ALLOWANCES FOR APPLIED FINISHES, I.E. PLATING, PAINTING, ETC.	DO NOT SCALE DRAWING		
9. HOLES ON SAME CENTERLINE MUST BE ALIGNED WITHIN ± .002 (0.051)			