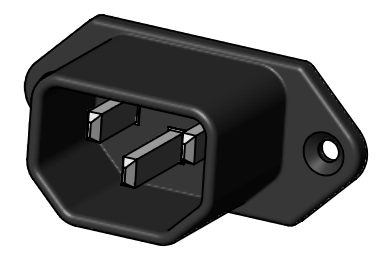
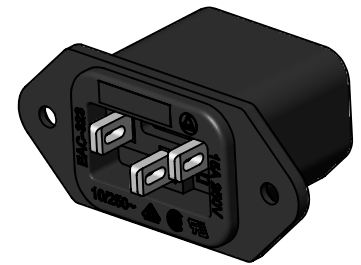


- NOTES:**
1. MEETS IEC 60320 SPECIFICATION
 2. AGENCY APPROVAL & RATING:
VDE:10A, 250V AC.
UL & CSA:15A, 250V AC.
 3. MATERIALS:
SHELL, BLACK POLYESTER
PINS, TIN PLATED COPPER ALLOY
 4. THIS PRODUCT IS RoHS COMPLIANT.



CUSTOMER DRAWING

REV	ECO NUMBER	DATE	BY	APVD
J	28187	7/12/19	BL	TJK
H	24129	03/27/02	BL	TJK
REVISIONS				

UNLESS OTHERWISE SPECIFIED

1. ALL DIMENSIONS IN INCHES

- TWO PLACE DECIMALS ±0.02

- THREE PLACE DECIMALS ±0.005

DO NOT SCALE DRAWING

THIS DRAWING DESCRIBES A DESIGN CONSIDERED PROPRIETARY IN NATURE, DEVELOPED AND MANUFACTURED BY SWITCHCRAFT INC. AND IS RELEASED ON A CONFIDENTIAL BASIS FOR IDENTIFICATION PURPOSES ONLY.										
SIZE	WIDTH	MULT	LBS/M	TEMPER						
FINISH					MATERIAL					
SPEC No.					SPEC No.					
FIRST USED ON					SCALE					
					2:1					
DATE DRAWN	BY	CHKD	APVD							
0724/85	AO	AM	RV							
			04/28/87	04/28/87						
NAME									PART No.	REV
AC RECEPTACLE, MALE, RoHS									EAC323	J
									SHEET 1 OF 1	