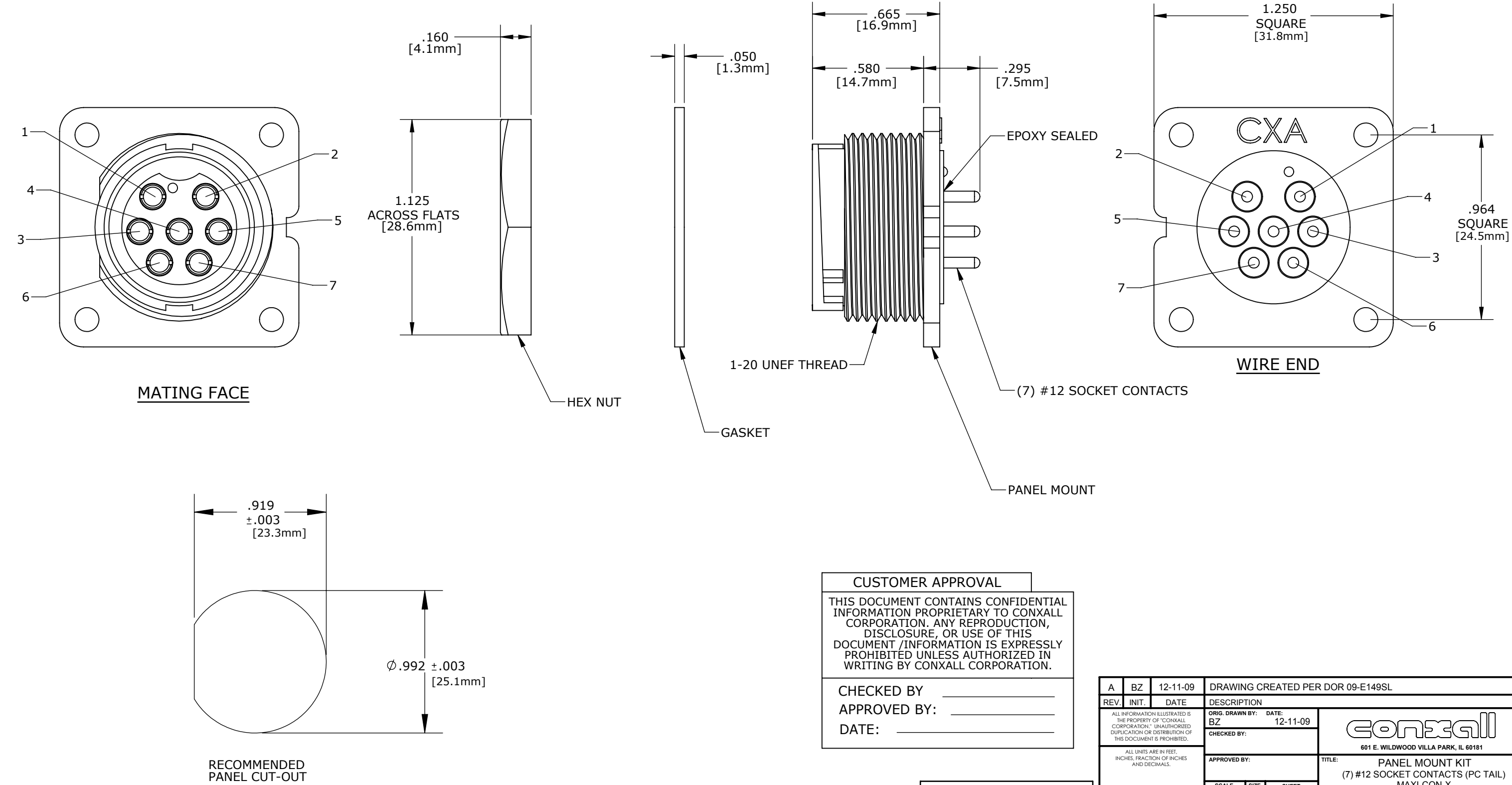



- NOTES:
- 1. PARTS ARE BULK PACKED.
 - 2. CONTACTS ARE INSERTED IN CONNECTOR.
 - 3. BACK OF CONNECTOR IS SEALED WITH EPOXY.
 - 4. ALL DIMENSIONS ARE REFERENCE ONLY.



DIMENSIONS IN BRACKET [] ARE METRIC.

RoHS COMPLIANT

CUSTOMER APPROVAL		
THIS DOCUMENT CONTAINS CONFIDENTIAL INFORMATION PROPRIETARY TO CONXALL CORPORATION. ANY REPRODUCTION, DISCLOSURE, OR USE OF THIS DOCUMENT /INFORMATION IS EXPRESSLY PROHIBITED UNLESS AUTHORIZED IN WRITING BY CONXALL CORPORATION.		
CHECKED BY:	_____	
APPROVED BY:	_____	
DATE:	_____	

A	BZ	12-11-09	DRAWING CREATED PER DOR 09-E149SL		
REV.	INIT.	DATE	DESCRIPTION		
BZ		12-11-09	ORIG. DRAWN BY:	DATE:	 601 E. WILDWOOD VILLA PARK, IL 60181
			CHECKED BY:		
ALL INFORMATION ILLUSTRATED IS THE PROPERTY OF "CONXALL CORPORATION." UNAUTHORIZED DUPLICATION OR DISTRIBUTION OF THIS DOCUMENT IS PROHIBITED.			APPROVED BY:		TITLE:
ALL UNITS ARE IN FEET, INCHES, FRACTION OF INCHES AND DECIMALS.			SCALE: NTS		(7) #12 SOCKET CONTACTS (PC TAIL)
FILE: 14181-7SG-3ES			SIZE: B		MAXI-CON-X
DIRECTORY: SLW			SHEET: 1 OF 1		CUSTOMER: STANDARD PRODUCT
PART NUMBER: 14181-7SG-3ES			REV: A		