

PART NUMBER: 14182-7PG-300

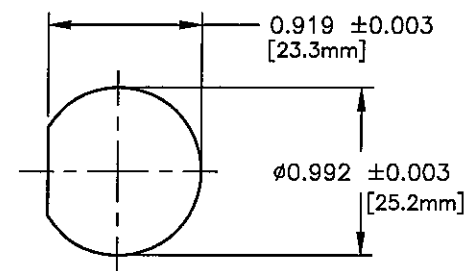
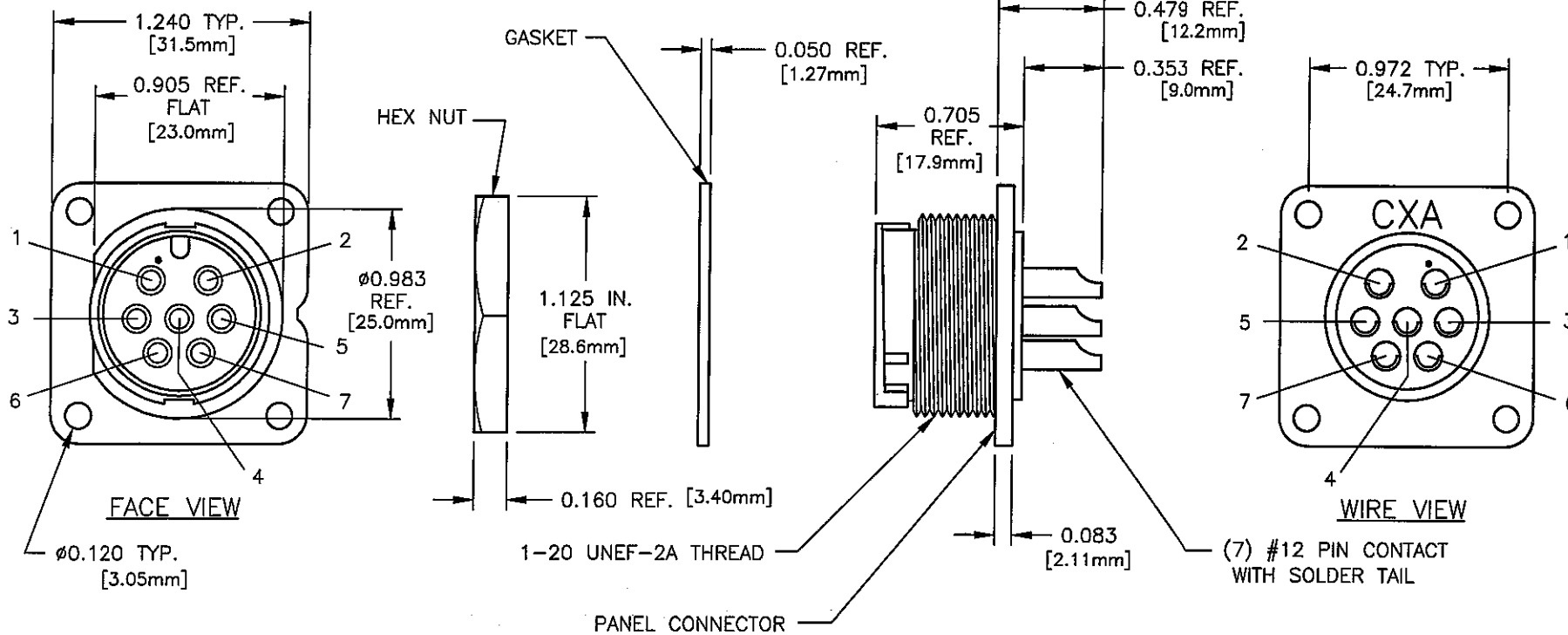
CUSTOMER PRINT

CUSTOMER APPROVAL

NOTES:

1. ALL PARTS TO BE BULK PACKED
2. CONTACTS TO BE INSERTED INTO PANEL CONNECTOR

CHECKED BY: \_\_\_\_\_  
 APPROVED BY: \_\_\_\_\_  
 DATE: \_\_\_\_\_



RECOMMENDED PANEL CUTOUT

COPY

A	RCS	09-10-03	CREATED DRAWING PER DOR #03-3210KZ
REV.	INIT.	DATE	DESCRIPTION
ALL INFORMATION ILLUSTRATED IS THE PROPERTY OF CONXALL CORPORATION. UNAUTHORIZED DUPLICATION OR DISTRIBUTION OF THIS DOCUMENT IS PROHIBITED.			ORIG. DRAWN BY: DATE: RCS 09-09-03
ALL UNITS ARE IN FEET, INCHES, FRACTION OF INCHES AND DECIMALS.			CHECKED BY: [Signature] 9/11/03
UNLESS OTHERWISE SPECIFIED TOLERANCES: 3 PLACE DECIMALS ±.005 ANGLES ±1° FRACTIONS ±1/16			APPROVED BY: [Signature] 9/11/03
SCALE	SIZE	SHEET	 601 E. WILDWOOD VILLA PARK, IL 60181 TITLE: CONNECTOR ASSEMBLY 7 #12 PIN CONTACT (SOLDER) MAXI-CON-X CUSTOMER: STANDARD PRODUCT
NTS	A	1 OF 1	
FILE:	DIRECTORY:	PART NUMBER:	REV.
141827PG300	CATALOG	14182-7PG-300	A