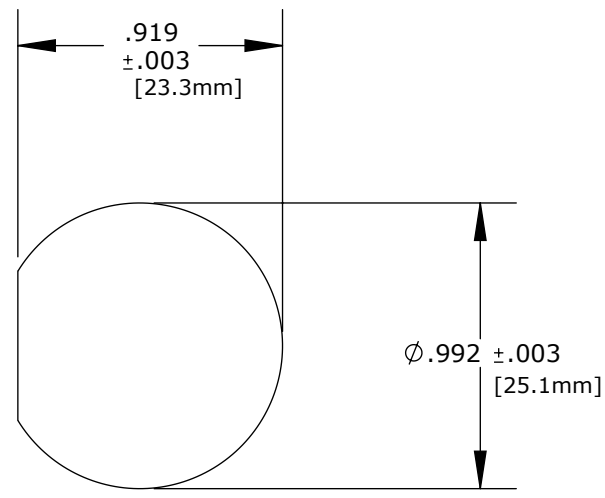
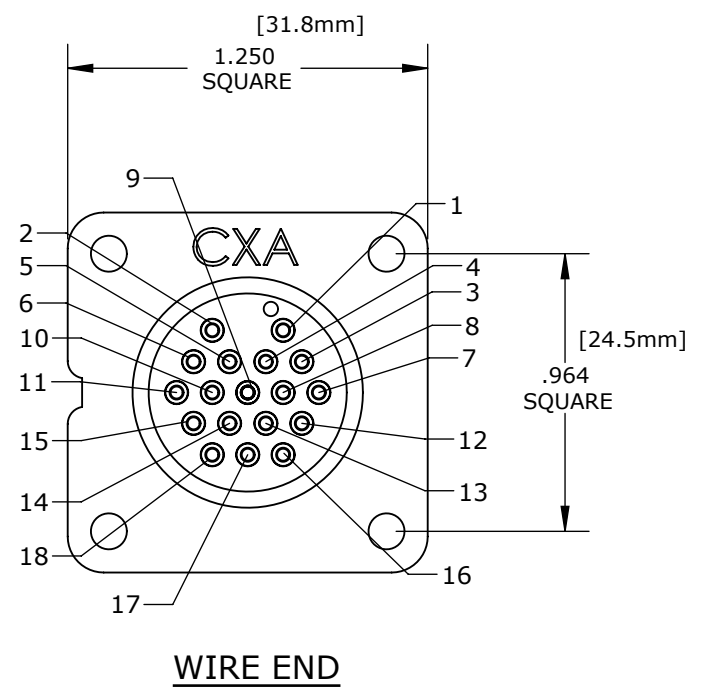
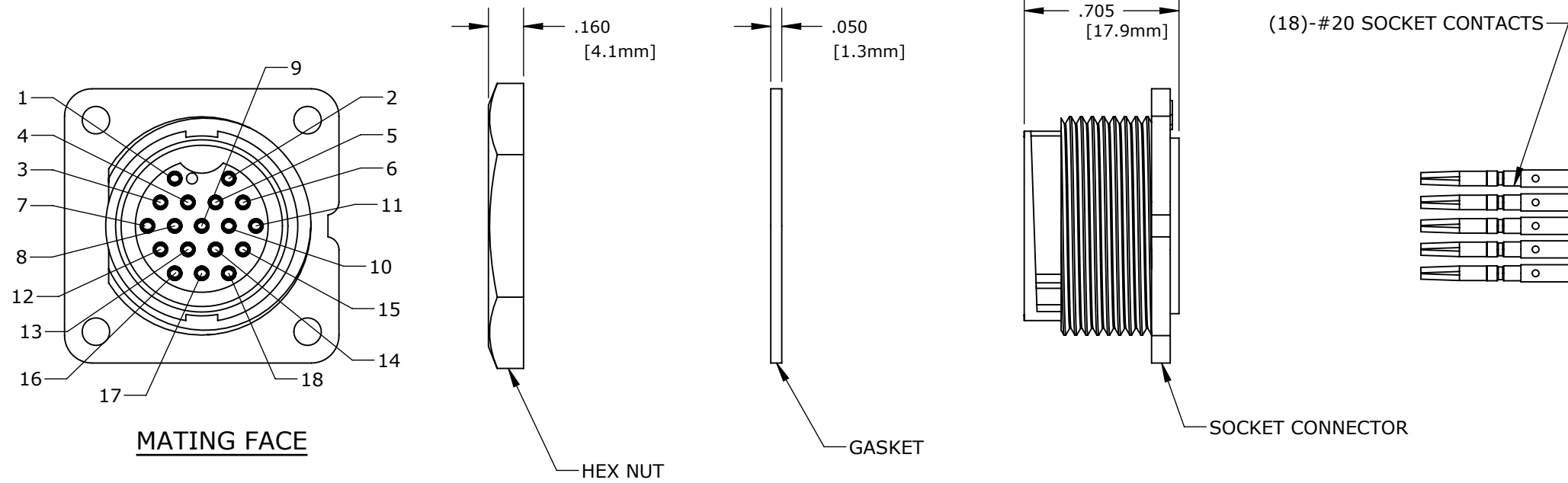



- NOTES:
 1. PARTS TO BE BULK PACKED
 2. ALL DIMENSIONS ARE REFERENCE ONLY.

CUSTOMER APPROVAL	
THIS DOCUMENT CONTAINS CONFIDENTIAL INFORMATION PROPRIETARY TO CONXALL CORPORATION. ANY REPRODUCTION, DISCLOSURE, OR USE OF THIS DOCUMENT /INFORMATION IS EXPRESSLY PROHIBITED UNLESS AUTHORIZED IN WRITING BY CONXALL CORPORATION.	
CHECKED BY: _____	APPROVED BY: _____
DATE: _____	



DIMENSIONS IN BRACKET [] ARE METRIC.

A	AN	07-01-08	DRAWING CREATED PER DOR 08-644KL	
REV.	INIT.	DATE	DESCRIPTION	
	AN	06-27-08	ORIG. DRAWN BY: AN	DATE: 06-27-08
			CHECKED BY:	
			APPROVED BY:	
ALL INFORMATION ILLUSTRATED IS THE PROPERTY OF "CONXALL CORPORATION." UNAUTHORIZED DUPLICATION OR DISTRIBUTION OF THIS DOCUMENT IS PROHIBITED.			 601 E. WILDWOOD VILLA PARK, IL 60181	
ALL UNITS ARE IN FEET, INCHES, FRACTION OF INCHES AND DECIMALS. UNLESS OTHERWISE SPECIFIED TOLERANCES: 3 PLACE DECIMALS ±.005 ANGLES ±1° FRACTIONS ±1/16				
SCALE: NTS		SIZE: B	SHEET: 1 OF 1	
FILE: 14280-18SG-300		DIRECTORY: SLW	TITLE: CONNECTOR KIT (18)-#20 SOCKET CONTACTS (CRIMP) MAXI-CON-X	
			CUSTOMER: STANDARD PRODUCT	
			PART NUMBER: 14280-18SG-300	
				REV: A