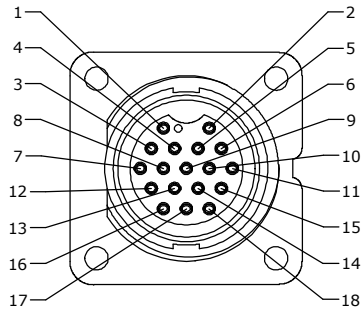
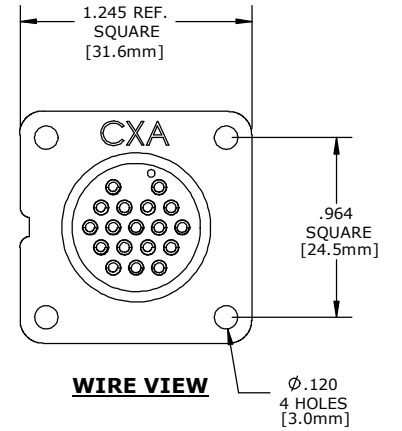
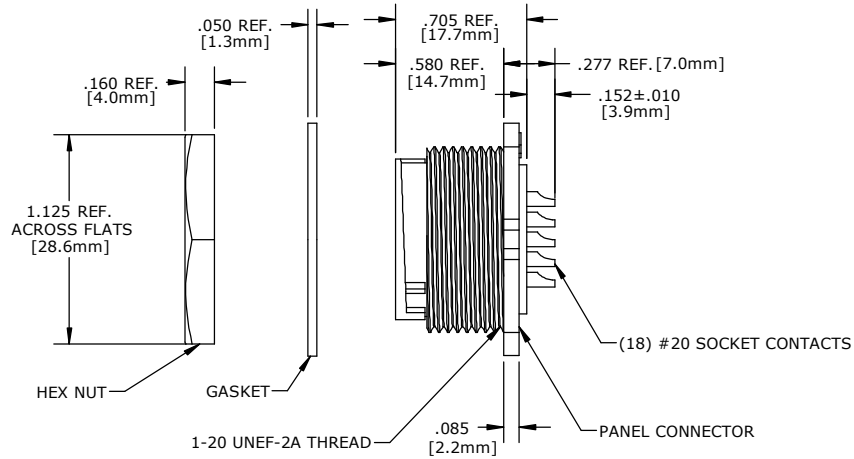


NOTES:

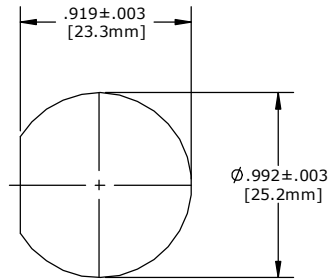
1. FINISHED PRODUCT TO BE BULK PACKAGED 100 PCS PER BAG (B)
2. ALL GASKETS AND HEX NUTS TO BE BULK PACKED.
3. CONTACTS TO BE INSERTED INTO CONNECTOR AS SHOWN. SEE DRAWING HPMXSTD FOR HOLE PATTERN.



FACE VIEW



WIRE VIEW



RECOMMENDED PANEL CUTOUT

DIMENSIONS IN BRACKETS [] ARE METRIC

CUSTOMER APPROVAL

THIS DOCUMENT CONTAINS CONFIDENTIAL INFORMATION PROPRIETARY TO CONXALL CORPORATION. ANY REPRODUCTION, DISCLOSURE, OR USE OF THIS DOCUMENT /INFORMATION IS EXPRESSLY PROHIBITED UNLESS AUTHORIZED IN WRITING BY CONXALL CORPORATION.

APPROVED BY: _____

DATE: _____

RoHS COMPLIANT

B	JD	10-11-13	UPDATED NOTE #1 TO ADD A BAG FOR PACKAGING
A	BZ	01-18-10	DRAWING CREATED PER ECR 7330
REV.	INIT.	DATE	DESCRIPTION
CONXALL		01-18-10	
<small>ALL INFORMATION ILLUSTRATED IS THE PROPERTY OF CONXALL CORPORATION. UNAUTHORIZED REPRODUCTION OR DISTRIBUTION OF THIS DOCUMENT IS PROHIBITED.</small>			
<small>ALL UNITS ARE IN FEET, INCHES, FRACTION OF INCHES AND DECIMALS.</small>			TITLE: PANEL MOUNT CONNECTOR (18) #20 SOCKET CONTACTS W/ SOLDER CUP MAXI-CON-X CUSTOMER: STANDARD PRODUCT
SCALE	SIZE	SHEET	FILE
NTS	B	1 OF 1	4282-18SG-300
DIRECTORY: SLW		PART NUMBER:	14282-18SG-300
<small>CRITICAL CHARACTERISTIC FLAG PER SPEC XXXX</small>			REV B