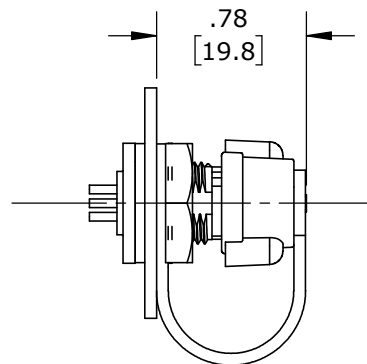
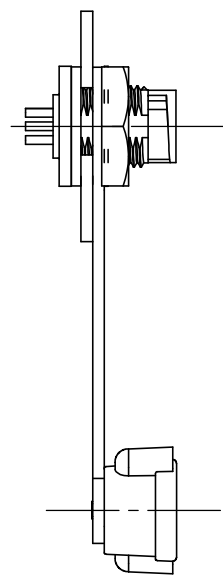
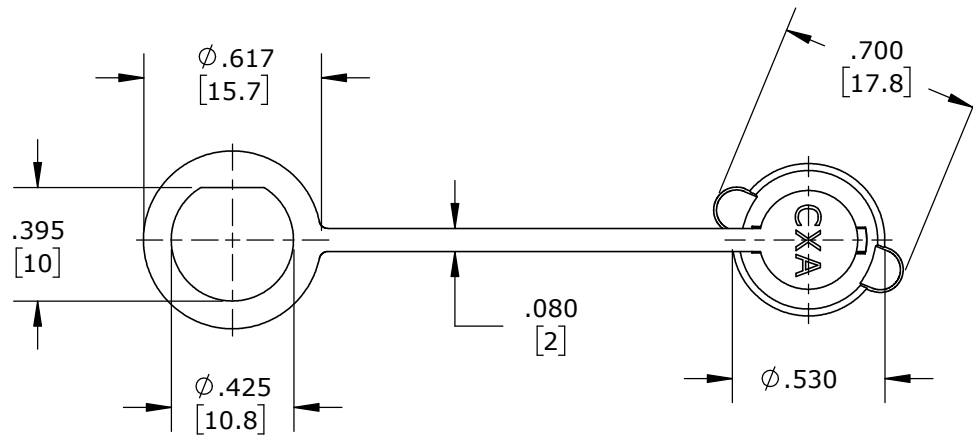
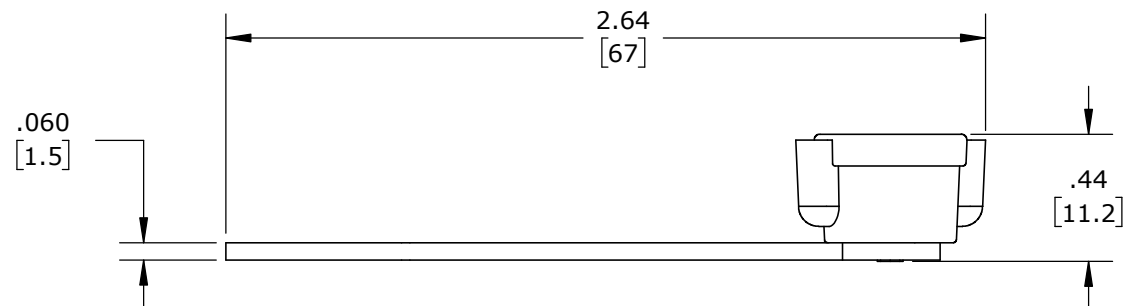


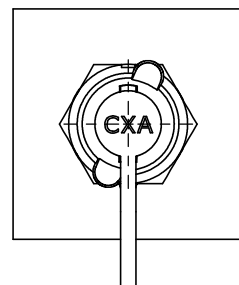
NOTES:

1. ALL PARTS TO BE BULK PACKED.
2. 17295UV-B-WA CONTAINS ONE IP SEAL CAP ASSEMBLY AND ONE FLAT WASHER.
3. ALL DIMENSIONS ARE REFERENCE ONLY

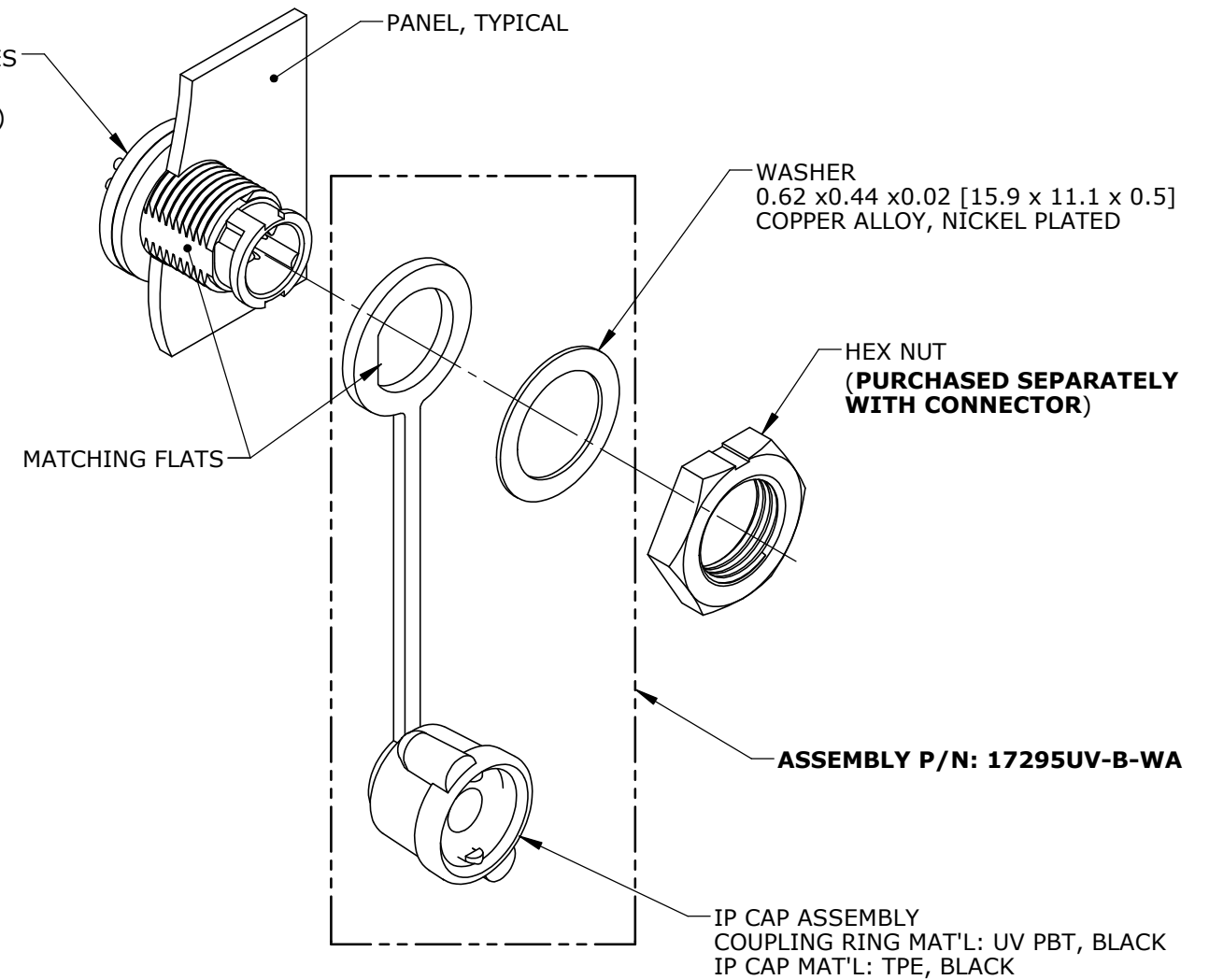
TYPICAL MICRO-CON-X SERIES
PANEL-MOUNT CONNECTOR
(PURCHASED SEPARATELY)



SIDE VIEW



FRONT VIEW

FIG C: IP CAP APPLIED ON THE CONNECTOR**FIG B:** IP CAP INSTALLED
ON THE CONNECTOR**FIG A**

INSTALLATION INSTRUCTIONS:

1. INSTALL IP CAP ON THE CONNECTOR AS SHOWN IN FIG A AND FIG B.
2. HEX NUT RECOMMENDED TORQUE: 5 lb-in [0.56 N-m]
3. TO APPLY IP CAP (FIG C), ALIGN COUPLING RING TO FRONT OF CONNECTOR, PRESS AND TWIST ABOUT 20° CLOCKWISE TO SECURED IT IN PLACE.


CUSTOMER APPROVAL

THIS DOCUMENT CONTAINS CONFIDENTIAL INFORMATION PROPRIETARY TO CONXALL CORPORATION. ANY REPRODUCTION, DISCLOSURE, OR USE OF THIS DOCUMENT /INFORMATION IS EXPRESSLY PROHIBITED UNLESS AUTHORIZED IN WRITING BY CONXALL CORPORATION.

APPROVED BY: _____
DATE: _____

DIMENSIONS IN BRACKETS [] ARE METRIC

RoHS COMPLIANT

| | | | | |
|---------------------|-------|----------|--|---|
| A | AN | 10-10-24 | RELEASED | |
| | PNK | 11-01-23 | DRAWING CREATED PER PDR 23007 | |
| REV. | INIT. | DATE | DESCRIPTION | |
| | | | ALL INFORMATION ILLUSTRATED IS THE PROPERTY OF "CONXALL CORPORATION". UNAUTHORIZED DUPLICATION OR DISTRIBUTION OF THIS DOCUMENT IS PROHIBITED. | |
| | | | ALL UNITS ARE IN FEET, INCHES, FRACTION OF INCHES AND DECIMALS. | |
| | | | = CRITICAL CHARACTERISTIC FLAG PER SPEC. XXXX | |
| ORIG. DRAWN BY: PNK | | | DATE: 11-01-23 |  601 E. WILDWOOD VILLA PARK, IL 60181 |
| CHECKED BY: | | | APPROVED BY: | |
| SCALE NTS | | | SIZE B | TITLE: IP CAP, UV PANEL-MOUNT MICRO-CON-X |
| FILE: 17295UV-B-WA | | | SHEET 1 OF 1 | |
| DIRECTORY: SLW | | | CUSTOMER: STANDARD PRODUCT | PART NUMBER: 17295UV-B-WA |
| | | | | REV A |