

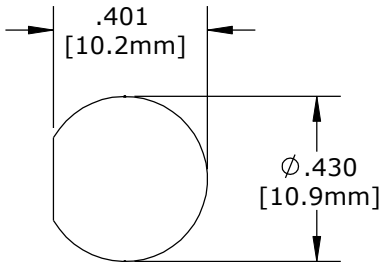
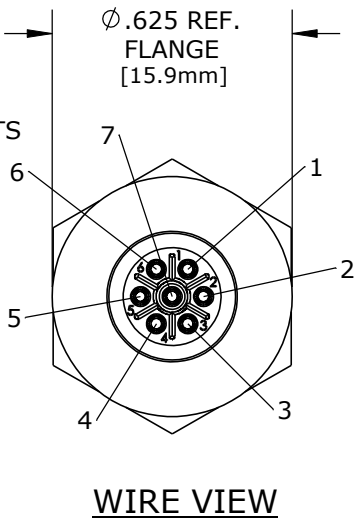
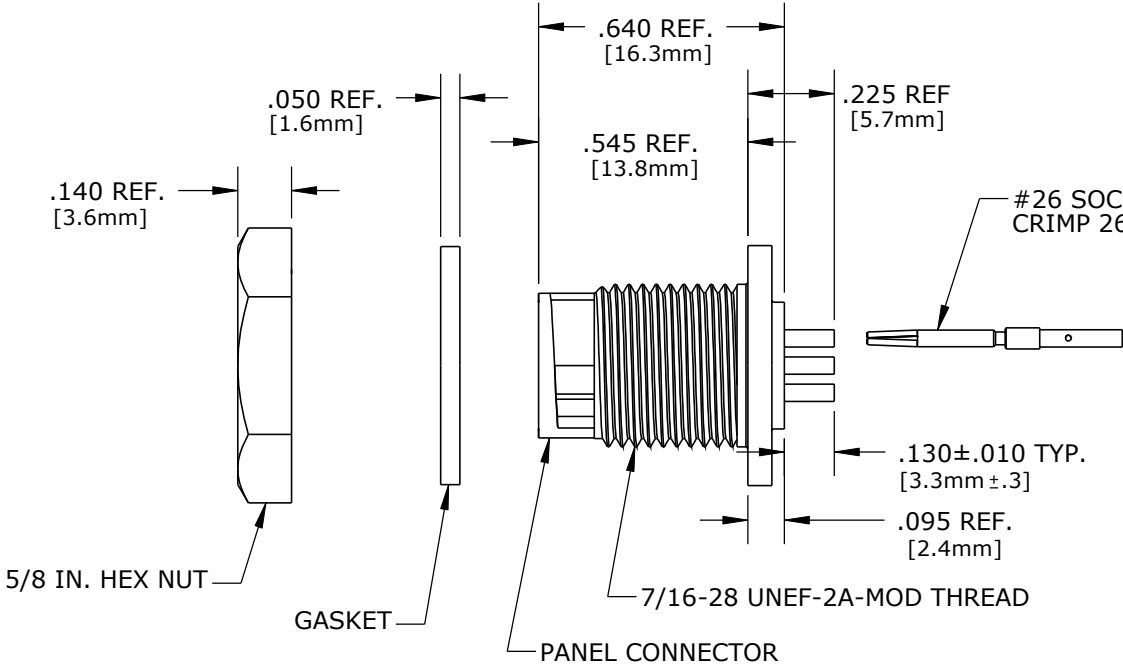
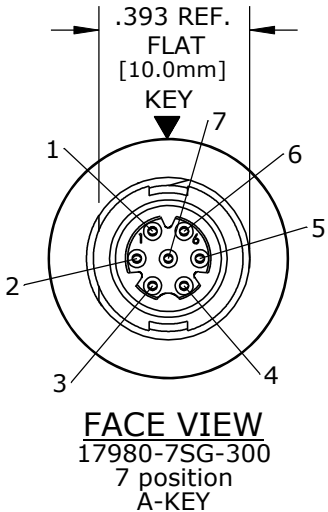
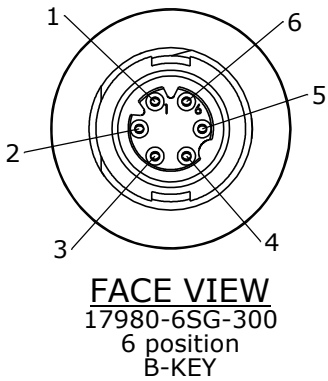
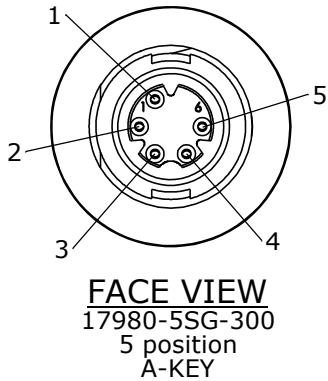
CUSTOMER PRINT

PART NUMBER: 17980-XSG-300

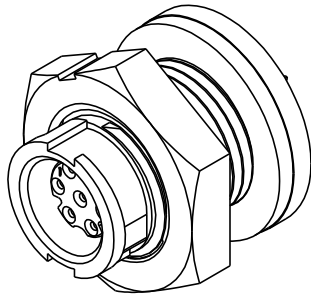
NOTES:  
1. PARTS ARE TO BE BULK PACKED.

ASS'Y P/N	CONTACT QTY.	KEY STYLE
17980-5SG-300	5 - #26	A-KEY
17980-6SG-300	6 - #26	B-KEY
17980-7SG-300	7 - #26	A-KEY

NUMBER OF CONTACTS



RECOMMENDED  
PANEL CUT-OUT  
TOLERANCE: ±.003



CUSTOMER APPROVAL

THIS DOCUMENT CONTAINS CONFIDENTIAL INFORMATION PROPRIETARY TO CONXALL CORPORATION. ANY REPRODUCTION, DISCLOSURE, OR USE OF THIS DOCUMENT /INFORMATION IS EXPRESSLY PROHIBITED UNLESS AUTHORIZED IN WRITING BY CONXALL CORPORATION.

APPROVED BY: \_\_\_\_\_  
DATE: \_\_\_\_\_

A	PAK	07/28/10	DRAWING CREATED PER DOR 09-E168CS; ADDED 5-POS. ASSY.					
REV.	INIT.	DATE	DESCRIPTION					
<div>ALL INFORMATION ILLUSTRATED IS THE PROPERTY OF "CONXALL CORPORATION." UNAUTHORIZED DUPLICATION OR DISTRIBUTION OF THIS DOCUMENT IS PROHIBITED.</div>			ORIG. DRAWN BY: PAK		DATE: 08/21/09		<div>CONXall</div> <div>601 E. WILDWOOD VILLA PARK, IL 60181</div>	
			CHECKED BY:					
<div>ALL UNITS ARE IN FEET, INCHES, FRACTION OF INCHES AND DECIMALS.</div> <div>UNLESS OTHERWISE SPECIFIED TOLERANCES: 3 PLACE DECIMALS ±.005 ANGLES ±1° FRACTIONS ±1/16</div>			APPROVED BY:		TITLE: PANEL CONNECTOR ASSEMBLY #26 SOCKET CONTACTS, CRIMP MICRO-CON-X, A-KEY & B-KEY STANDARD PRODUCT			
			SCALE NTS	SIZE B	SHEET 1 OF 1		CUSTOMER:	
▷	= CRITICAL CHARACTERISTIC FLAG PER SPEC. XXXX		FILE: 17980-XSG-300	DIRECTORY: SLW	PART NUMBER:	17980-XSG-300		REV A