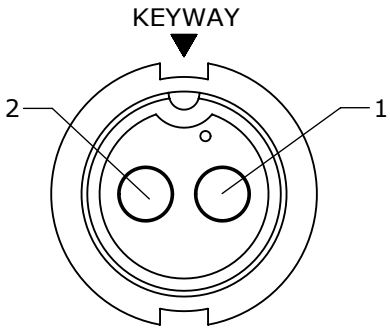
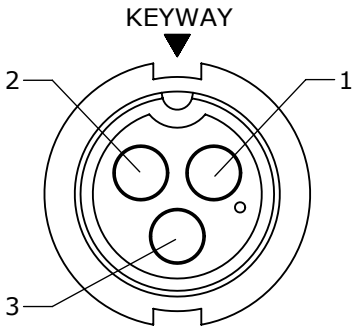


NOTES:  
1. PARTS TO BE BULK PACKED  
2. ALL DIMENSIONS ARE REFERENCE ONLY.

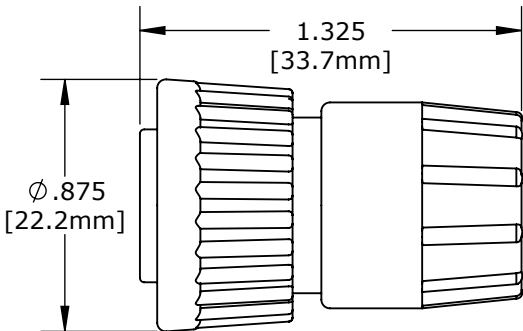
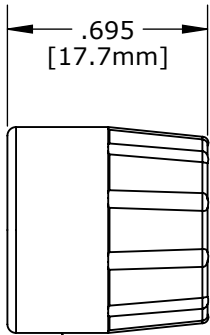
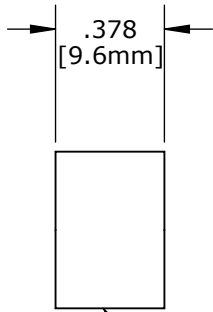
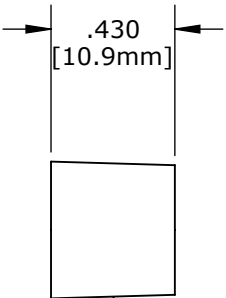
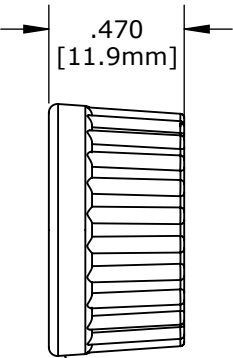
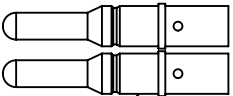
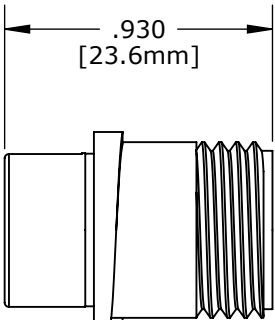
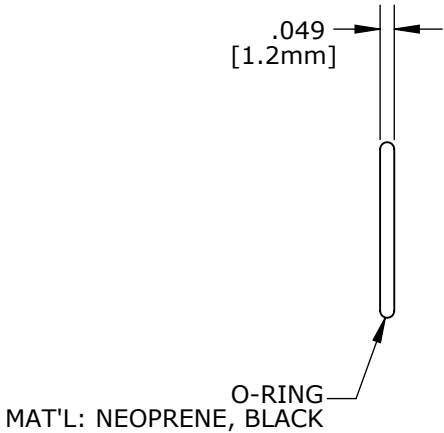


MATING FACE  
ASS'Y: 3180-2PG-3XX



MATING FACE  
ASS'Y: 3180-3PG-3XX

ASS'Y P/N:	GROMMET FIT CABLE O.D.
3180-2PG-315	0.15-0.17 [3.8-4.3]
3180-3PG-315	
3180-2PG-318	0.18-0.20 [4.6-5.1]
3180-3PG-318	
3180-2PG-321	0.21-0.23 [5.3-5.8]
3180-3PG-321	
3180-2PG-324	0.24-0.27 [6.1-6.8]
3180-3PG-324	
3180-2PG-328	0.28-0.29 [7.1-7.4]
3180-3PG-328	
3180-2PG-330	0.30-0.32 [7.6-8.1]
3180-3PG-330	



SHOWN ASSEMBLED KIT  
FOR CUSTOMER REFERENCE ONLY

DIMENSIONS IN BRACKET [ ] ARE METRIC.

CUSTOMER APPROVAL	
THIS DOCUMENT CONTAINS CONFIDENTIAL INFORMATION PROPRIETARY TO CONXALL CORPORATION. ANY REPRODUCTION, DISCLOSURE, OR USE OF THIS DOCUMENT /INFORMATION IS EXPRESSLY PROHIBITED UNLESS AUTHORIZED IN WRITING BY CONXALL CORPORATION.	
APPROVED BY:	_____
DATE:	_____

A	PD	05-11-12	DRAWING CREATED PER DOR 12-E149SL #14	
REV.	INIT.	DATE	DESCRIPTION	
	PD	05-11-12	ORIG. DRAWN BY: DATE: PD 05-11-12	
ALL INFORMATION ILLUSTRATED IS THE PROPERTY OF "CONXALL CORPORATION." UNAUTHORIZED DUPLICATION OR DISTRIBUTION OF THIS DOCUMENT IS PROHIBITED.			CHECKED BY:	
ALL UNITS ARE IN FEET, INCHES, FRACTION OF INCHES AND DECIMALS.			APPROVED BY:	
= CRITICAL CHARACTERISTIC FLAG PER SPEC. XXXX			TITLE: CONNECTOR ASSEMBLY KIT #12 PIN CONTACTS MULTI-CON-X STANDARD PRODUCT	
FILE:	3180-XPG-3XX	DIRECTORY:	PART NUMBER:	3180-XPG-3XX
				REV A