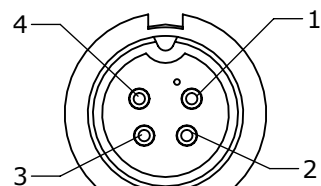


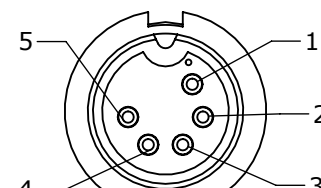
CUSTOMER PRINT

PART NUMBER: 3280-XPG-3XX

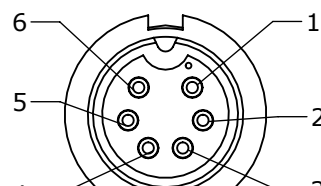
NOTES:  
1. PARTS TO BE BULK PACKED.



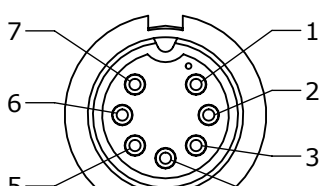
MATING FACE  
P/N: 3280-4PG-300



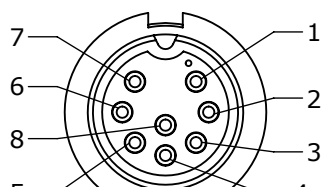
MATING FACE  
P/N: 3280-5PG-300



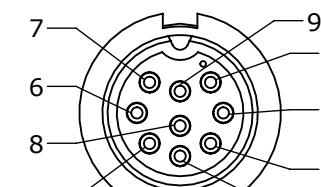
MATING FACE  
P/N: 3280-6PG-300



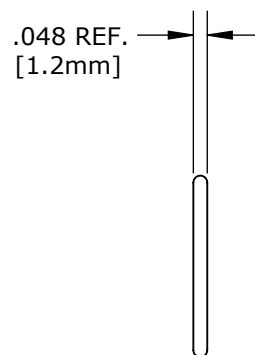
MATING FACE  
P/N: 3280-7PG-300



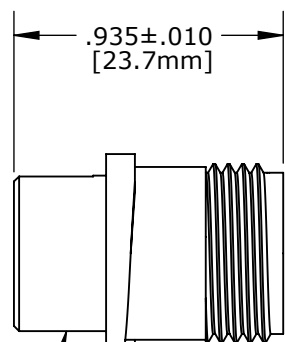
MATING FACE  
P/N: 3280-8PG-300



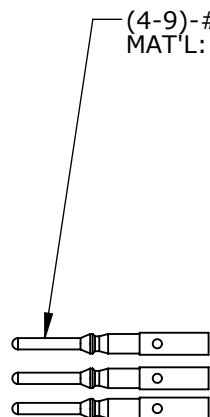
MATING FACE  
P/N: 3280-9PG-300



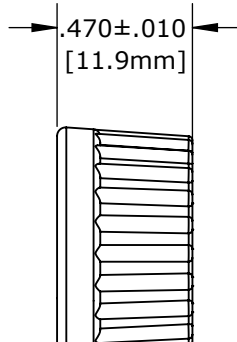
O-RING  
MAT'L: NEOPRENE, BLACK



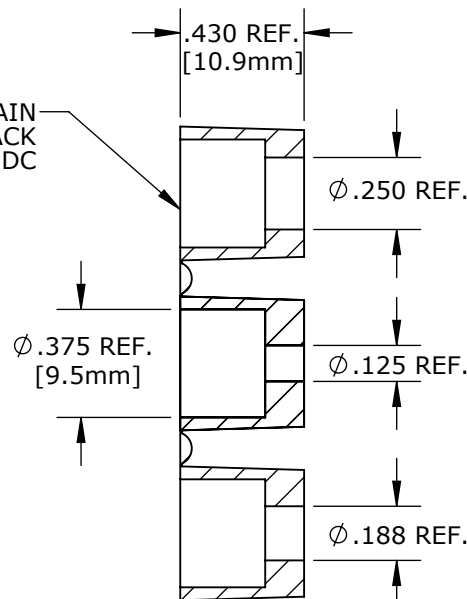
PIN CONNECTOR  
MAT'L: THERMOPLASTIC, BLACK



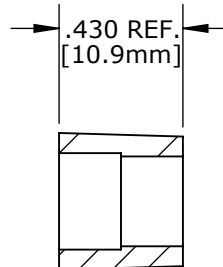
(4-9)-#20 PIN CONTACTS  
MAT'L: GOLD PLATED  
COPPER ALLOY



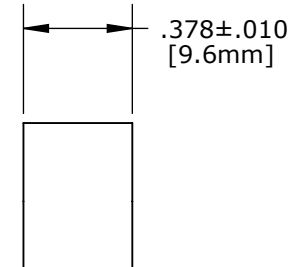
COUPLING RING  
MAT'L: THERMOPLASTIC, BLACK



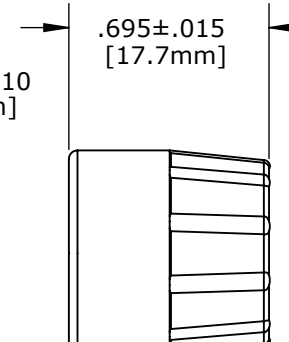
GROMMET, DAISY CHAIN  
MAT'L: RUBBER, BLACK  
FOR 3280-XPG-3DC



GROMMET  
MAT'L: SANTOPRENE, BLACK  
FOR CABLE O.D.  
SEE TABLE



SLEEVE  
MAT'L: THERMOPLASTIC, BLACK



BACKSHELL  
MAT'L: THERMOPLASTIC, BLACK

CONN. KIT P/N	GROMMET SIZE
3280-XPG-3DC	DAISY CHAIN
3280-XPG-315	CABLE O.D. .15-.17 [3.8-4.3mm]
3280-XPG-318	CABLE O.D. .18-.20 [4.6-5.1mm]
3280-XPG-321	CABLE O.D. .21-.23 [5.3-5.8mm]
3280-XPG-324	CABLE O.D. .24-.27 [6.1-6.9mm]
3280-XPG-328	CABLE O.D. .28-.29 [7.1-7.4mm]
3280-XPG-330	CABLE O.D. .30-.32 [7.6-8.1mm]

CONN. KIT P/N	NO. OF CONTACTS
3280-4PG-3XX	(4)-#20
3280-5PG-3XX	(5)-#20
3280-6PG-3XX	(6)-#20
3280-7PG-3XX	(7)-#20
3280-8PG-3XX	(8)-#20
3280-9PG-3XX	(9)-#20
3280-XPG-3XX	

GROMMET SIZE FOR  
SINGLE GROMMET,  
OR "DC" FOR DAISY  
CHAIN

NO OF CONTACTS

DIMENSIONS IN BRACKET [ ] ARE METRIC.

CUSTOMER APPROVAL

THIS DOCUMENT CONTAINS CONFIDENTIAL INFORMATION PROPRIETARY TO CONXALL CORPORATION. ANY REPRODUCTION, DISCLOSURE, OR USE OF THIS DOCUMENT / INFORMATION IS EXPRESSLY PROHIBITED UNLESS AUTHORIZED IN WRITING BY CONXALL CORPORATION.

CHECKED BY: \_\_\_\_\_  
APPROVED BY: \_\_\_\_\_  
DATE: \_\_\_\_\_

RoHS COMPLIANT

A	AN	04-09-15	DRAWING CREATED PER DOR 15-E149SL #4 SUPERSEDED DRAWING 3280-9PG-3XX
REV.	INIT.	DATE	DESCRIPTION
	AN	04-09-15	ALL INFORMATION ILLUSTRATED IS THE PROPERTY OF "CONXALL CORPORATION". UNAUTHORIZED DUPLICATION OR DISTRIBUTION OF THIS DOCUMENT IS PROHIBITED.
			<p>601 E. WILDWOOD VILLA PARK, IL 60181</p>
			<p>ALL UNITS ARE IN FEET, INCHES, FRACTION OF INCHES AND DECIMALS.</p> <p>UNLESS OTHERWISE SPECIFIED TOLERANCES: 3 PLACE DECIMALS ±.005 ANGLES ±1° FRACTIONS ±1/16</p> <p>△ - CRITICAL CHARACTERISTIC FLAG PER SPEC. XXXX</p>
			<p>APPROVED BY: _____</p> <p>SCALE: NTS SIZE: B SHEET: 1 OF 1</p> <p>FILE: 3280-XPG-3XX DIRECTORY: SLW</p>
			<p>TITLE: CONNECTOR KIT (4-9)-#20 PIN CONTACTS (CRIMP) MULTI-CON-X</p> <p>CUSTOMER: STANDARD PRODUCT</p> <p>PART NUMBER: 3280-XPG-3XX</p>
			REV A