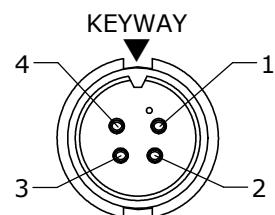


CUSTOMER PRINT

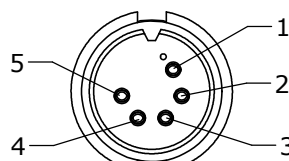
PART NUMBER: 3280-XSG-5XX(CCX)

- NOTES:**
 1. ALL PART TO BE BULK PACKED
 2. CONTACTS SUPPLIED UNASSEMBLED
 3. ALL DIMENSION ARE REFERENCE ONLY



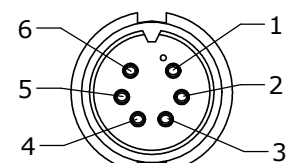
FACE VIEW

P/N: 3280-4SG-5XX



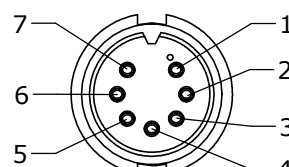
FACE VIEW

P/N: 3280-5SG-5XX



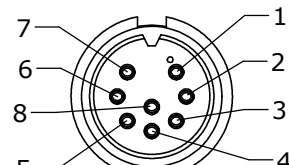
FACE VIEW

P/N: 3280-6SG-5XX



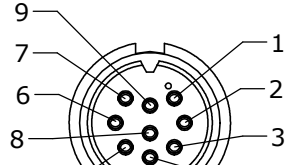
FACE VIEW

P/N: 3280-7SG-5XX



FACE VIEW

P/N: 3280-8SG-5XX



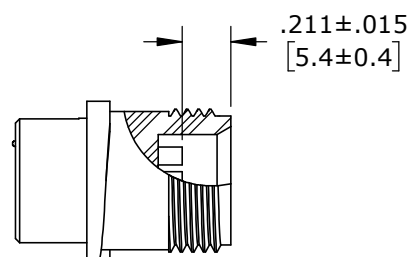
FACE VIEW

P/N: 3280-9SG-5XX

ASS'Y P/N	COUPLING RING COLOR
3280-XSG-5XXCC1	WHITE
3280-XSG-5XXCC2	RED
3280-XSG-5XXCC3	BLUE
3280-XSG-5XXCC4	LIGHT GREY
3280-XSG-5XXCC5	YELLOW
3280-XSG-5XXCC6	MAROON
3280-XSG-5XXCC7	GREEN

CONN. KIT P/N	NO. OF CONTACTS
3280-4SG-5XX	4-#20
3280-5SG-5XX	5-#20
3280-6SG-5XX	6-#20
3280-7SG-5XX	7-#20
3280-8SG-5XX	8-#20
3280-9SG-5XX	9-#20

CONN. KIT P/N	GROMMET FOR CABLE	"X" DIM.
3280-XSG-5DC	SEE DAISY CHAIN	Ø 0.77 [19.6mm]
3280-XSG-515	.156 I.D. FOR CABLE .15-.17 O.D. [3.8-4.3mm]	Ø 0.77 [19.6mm]
3280-XSG-518	.187 I.D. FOR CABLE .18-.20 O.D. [4.6-5.1mm]	Ø 0.77 [19.6mm]
3280-XSG-521	.225 I.D. FOR CABLE .21-.23 O.D. [5.3-5.8mm]	Ø 0.77 [19.6mm]
3280-XSG-524	.250 I.D. FOR CABLE .24-.27 O.D. [6.1-6.8mm]	Ø 0.77 [19.6mm]
3280-XSG-528	.285 I.D. FOR CABLE .28-.29 O.D. [7.1-7.4mm]	Ø 0.77 [19.6mm]
3280-XSG-530	.312 I.D. FOR CABLE .30-.32 O.D. [7.6-8.1mm]	Ø 0.77 [19.6mm]
3280-XSG-535	.375 I.D. FOR CABLE .35-.40 O.D. [8.9-10.2mm]	Ø 0.83 [21.1mm]



CONTACT HEIGHTS
FOR CUSTOMER REFERENCE

GROMMET, DAISY CHAIN
MAT'L: RUBBER, BLACK
FOR 3280-XSG-5DC

(4-9)-#20 SOCKET CONTACTS
MAT'L: GOLD PLATED
COPPER ALLOY

COUPLING RING
MAT'L: NYLON, BLACK
FOR 3280-XSG-5XXCCX
SEE COUPLING RING COLOR CHART

GROMMET
MAT'L: RUBBER, BLACK
FOR CABLE O.D.
SEE TABLE

SLEEVE
MAT'L: NYLON, BLACK

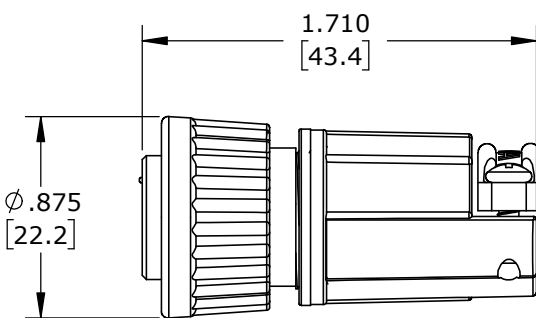
(2) #4 X 3/8
H-L SELF TAPPING SCREWS
MAT'L: STAINLESS STEEL

STRAP
MAT'L: NYLON, BLACK

BACKSHELL
MAT'L: NYLON, BLACK

O-RING
MAT'L: RUBBER, BLACK

PIN CONNECTOR, FEMALE
MAT'L: NYLON, BLACK
NO. OF CONTACTS
SEE CHART



ASSEMBLED VIEW
FOR CUSTOMER REFERENCE

DIMENSIONS IN BRACKETS [] ARE METRIC

CUSTOMER APPROVAL

THIS DOCUMENT CONTAINS CONFIDENTIAL INFORMATION PROPRIETARY TO CONXALL CORPORATION. ANY REPRODUCTION, DISCLOSURE, OR USE OF THIS DOCUMENT /INFORMATION IS EXPRESSLY PROHIBITED UNLESS AUTHORIZED IN WRITING BY CONXALL CORPORATION.

APPROVED BY: _____
DATE: _____

RoHS COMPLIANT

REV.	INIT.	DATE	DESCRIPTION
C	AN	04-09-0-21	DRAWING NO. WAS 3280-XSG-5XX. ADDED CONTACT HEIGHT VIEW, DAISY CHAIN GROMMET VIEW, & COUPLING RING TABLE. ADDED 3280-XSG-535, -5CD & "X" DIM. TO CHART, UPDATED STRAP STYLE. PER ECR 9543
B	AN	11-07-12	CHANGED MATERIAL DESCRIPTION PER DOR 12-E149SL #42
A	AN	11-03-11	DRAWING CREATED PER DOR 11-E149SL

ALL INFORMATION ILLUSTRATED IS THE PROPERTY OF "CONXALL CORPORATION". UNAUTHORIZED DUPLICATION OR DISTRIBUTION OF THIS DOCUMENT IS PROHIBITED.	ORIG. DRAWN BY: AN DATE: 10-27-11	
ALL UNITS ARE IN FEET, INCHES, FRACTION OF INCHES AND DECIMALS.	CHECKED BY:	
APPROVED BY:	SCALE: NTS SIZE: B SHEET: 1 OF 1	TITLE: CONNECTOR ASS'Y KIT (4-9) #20 SOCKET CONTACTS (CRIMP) MULTI-CON-X
FILE: 3280-XSG-5XX(CCX)	DIRECTORY: SLW	CUSTOMER: STANDARD PRODUCT
PART NUMBER: 3280-XSG-5XX(CCX)		REV: c