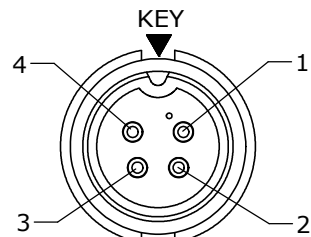


KIT P/N	GROMMET SIZE
3282-XPG-3DCW	DAISY CHAIN
3282-XPG-315W	CABLE O.D. .15-.17 [3.8-4.3mm]
3282-XPG-318W	CABLE O.D. .18-.20 [4.6-5.1mm]
3282-XPG-321W	CABLE O.D. .21-.23 [5.3-5.8mm]
3282-XPG-324W	CABLE O.D. .24-.27 [6.1-6.9mm]
3282-XPG-328W	CABLE O.D. .28-.29 [7.1-7.4mm]
3282-XPG-330W	CABLE O.D. .30-.32 [7.6-8.1mm]

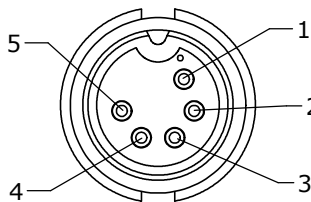
KIT P/N	NO. OF CONTACTS
3282-4PG-3XXW	(4)-#20
3282-5PG-3XXW	(5)-#20
3282-6PG-3XXW	(6)-#20
3282-7PG-3XXW	(7)-#20
3282-8PG-3XXW	(8)-#20
3282-9PG-3XXW	(9)-#20
3282-XPG-3XXW	

- NOTES:
 1. ALL PARTS TO BE BULK PACKED.
 2. CONTACTS TO BE INSERTED INTO CONNECTOR
 3. ALL DIMENSION ARE REFERENCE ONLY EXCEPT WHEN NOTED WITH TOLERANCE



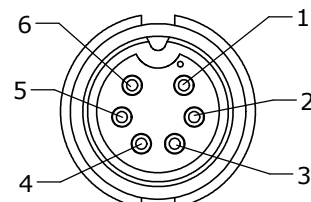
FACE VIEW

ASS'Y: 3282-4PG-3XXW



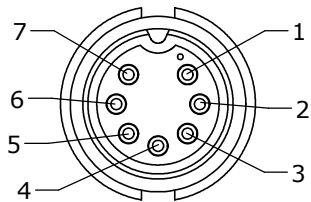
FACE VIEW

ASS'Y: 3282-5PG-3XXW



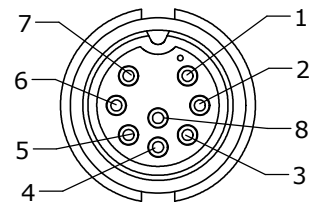
FACE VIEW

ASS'Y: 3282-6PG-3XXW



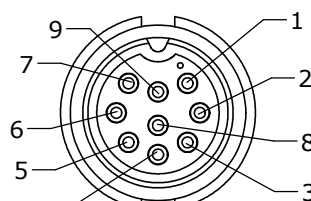
FACE VIEW

ASS'Y: 3282-7PG-3XXW



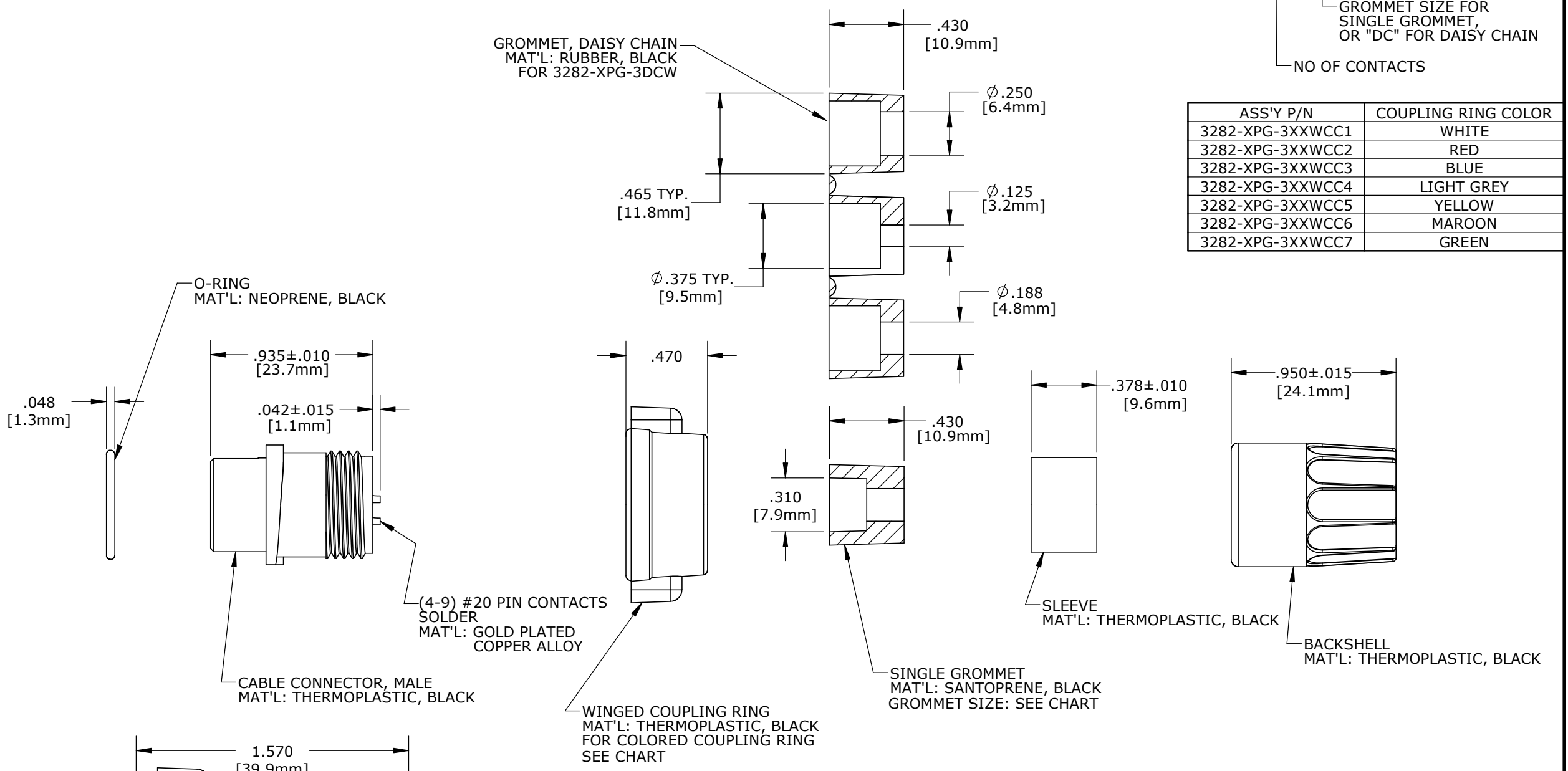
FACE VIEW

ASS'Y: 3282-8PG-3XXW



FACE VIEW

ASS'Y: 3282-9PG-3XXW



GROMMET SIZE FOR SINGLE GROMMET, OR "DC" FOR DAISY CHAIN
 NO OF CONTACTS

ASS'Y P/N	COUPLING RING COLOR
3282-XPG-3XXWCC1	WHITE
3282-XPG-3XXWCC2	RED
3282-XPG-3XXWCC3	BLUE
3282-XPG-3XXWCC4	LIGHT GREY
3282-XPG-3XXWCC5	YELLOW
3282-XPG-3XXWCC6	MAROON
3282-XPG-3XXWCC7	GREEN

SHOWN ASSEMBLED KIT
 FOR CUSTOMER REFERENCE ONLY

DIMENSIONS IS BRACKETS [] ARE METRIC

CUSTOMER APPROVAL
 THIS DOCUMENT CONTAINS CONFIDENTIAL INFORMATION PROPRIETARY TO CONXALL CORPORATION. ANY REPRODUCTION, DISCLOSURE, OR USE OF THIS DOCUMENT /INFORMATION IS EXPRESSLY PROHIBITED UNLESS AUTHORIZED IN WRITING BY CONXALL CORPORATION.
 APPROVED BY: _____
 DATE: _____

RoHS COMPLIANT

A	AN	09-08-20	DRAWING CREATED PER DOR 20-E149SL #29
REV.	INIT.	DATE	DESCRIPTION
<small>ALL INFORMATION ILLUSTRATED IS THE PROPERTY OF CONXALL CORPORATION. UNAUTHORIZED DUPLICATION OR DISTRIBUTION OF THIS DOCUMENT IS PROHIBITED.</small>			<small>ORIG. DRAWN BY: AN DATE: 09-08-20</small> <small>CHECKED BY:</small>
<small>ALL UNITS ARE IN FEET, INCHES, FRACTION OF INCHES AND DECIMALS.</small>			<small>APPROVED BY:</small> <small>TITLE: CABLE CONNECTOR KIT (4-9) #20 PIN CONTACTS, SOLDER MULTI-CON-X, WINGED COUPLING RING STANDARD PRODUCT</small> <small>CUSTOMER: STANDARD PRODUCT</small>
SCALE	SIZE	SHEET	
NTS	B	1 OF 1	
FILE:	DIRECTORY:	PART NUMBER:	REV
3282-XPG-3XXW(CCX)	SLW	3282-XPG-3XXW(CCX)	A

CUSTOMER PRINT

PART NUMBER: 3282-XPG-3XXW(CCX)