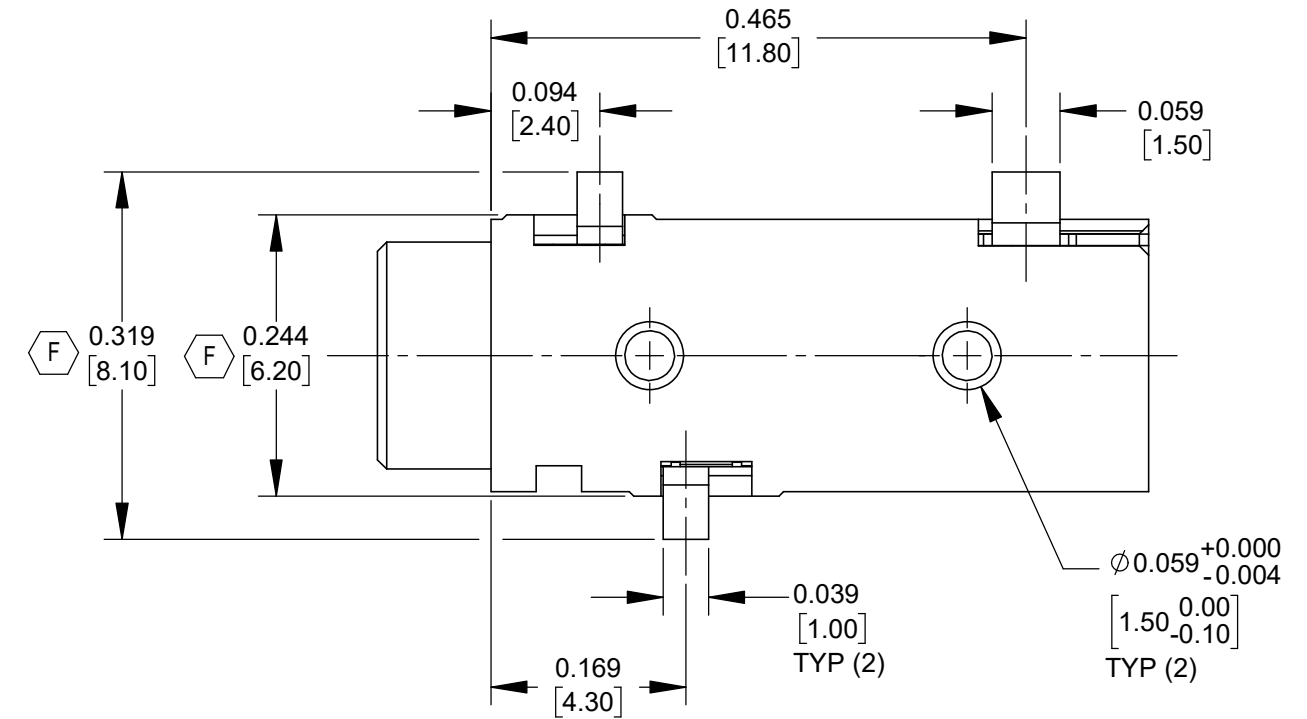
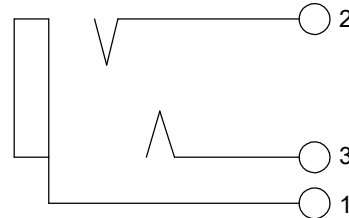
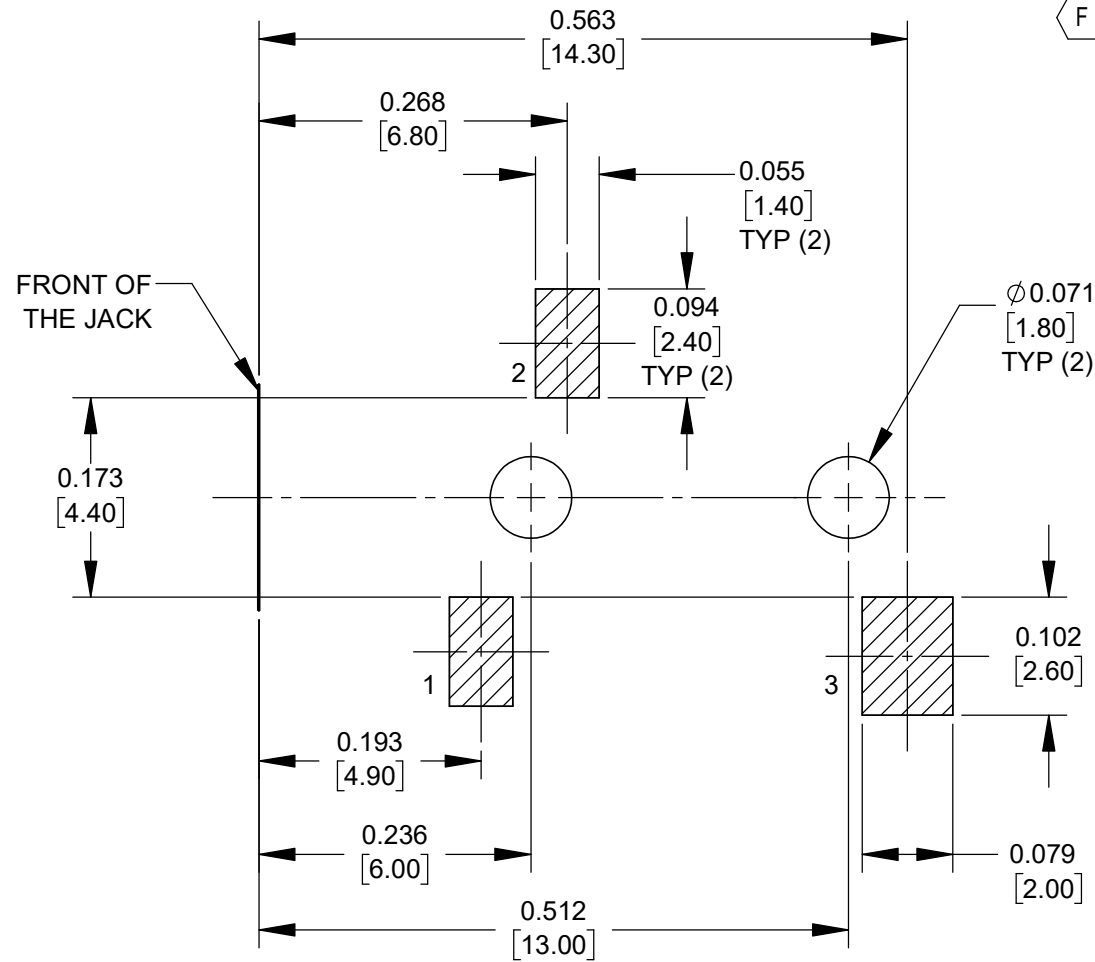
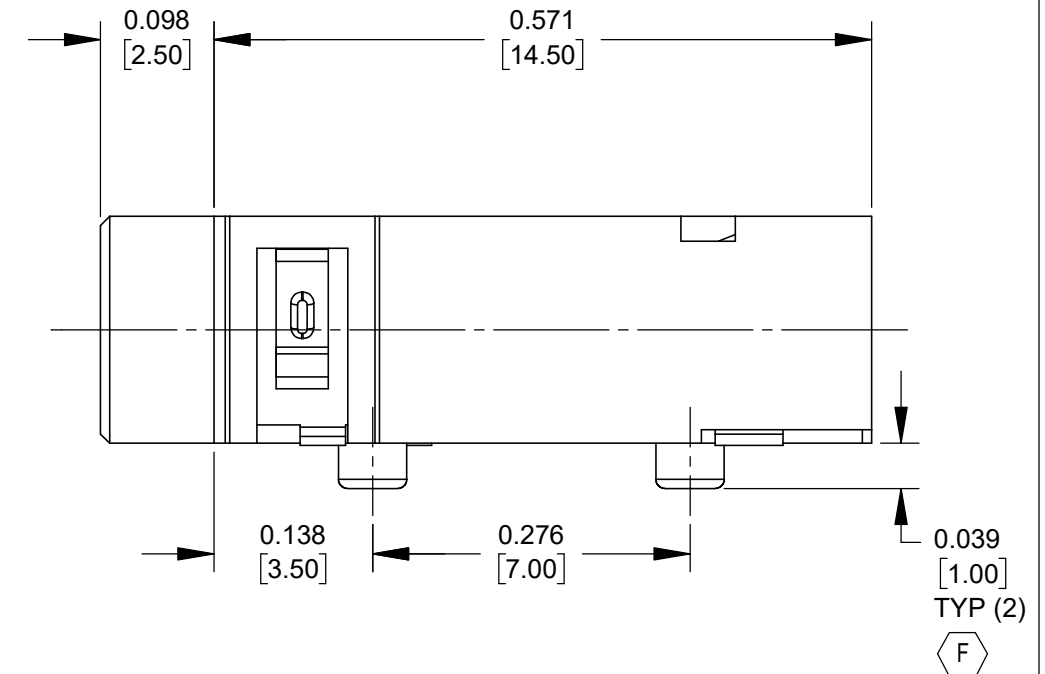
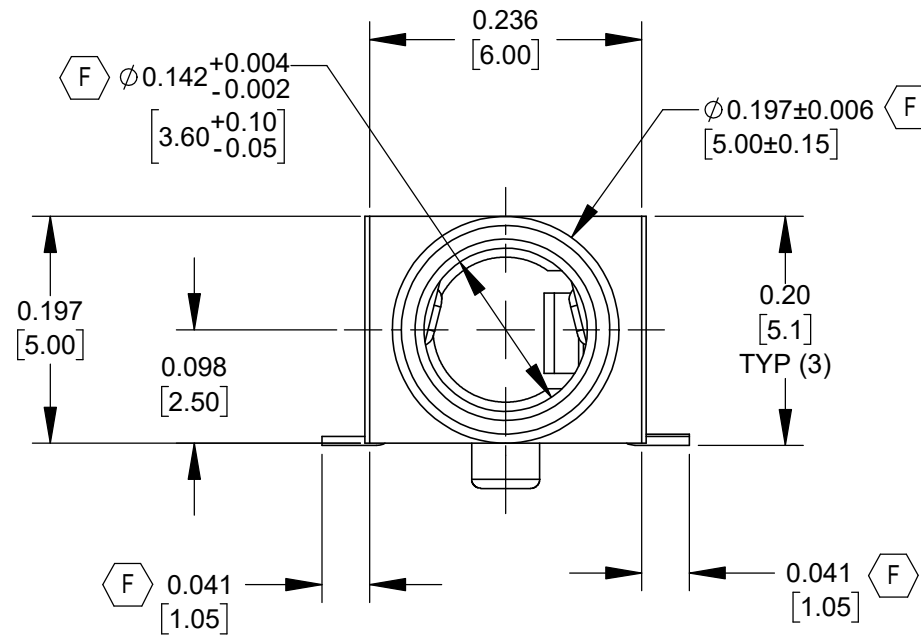


**NOTES:**

1. ALL DIMENSIONS ARE REFERENCE.
2. MATERIALS:  
HOUSING - THERMOPLASTIC, BLACK  
TERMINALS - COPPER ALLOY, GOLD FLASH
3. SUPPLIED ON TAPE AND REEL, SEE SHEET 2.
4. THIS PRODUCT IS RoHS COMPLIANT.

(F)



**CUSTOMER DRAWING**

REV	ECO NUMBER	DATE	BY	APVD
F	28625	09/28/23	PC	TJK
E	REDRAWN 28478	02/23/22	PC	TJK

REVISIONS

**UNLESS OTHERWISE SPECIFIED**

1. ALL DIMENSIONS IN INCHES [mm]  
 - TWO PLACE DECIMALS  $\pm 0.02$  [0.5]  
 - THREE PLACE DECIMALS  $\pm 0.005$  [0.13]

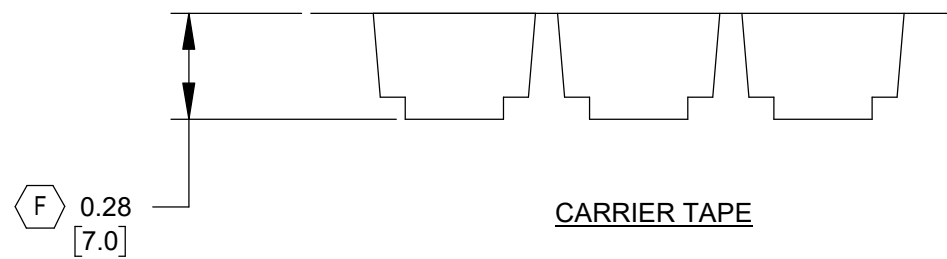
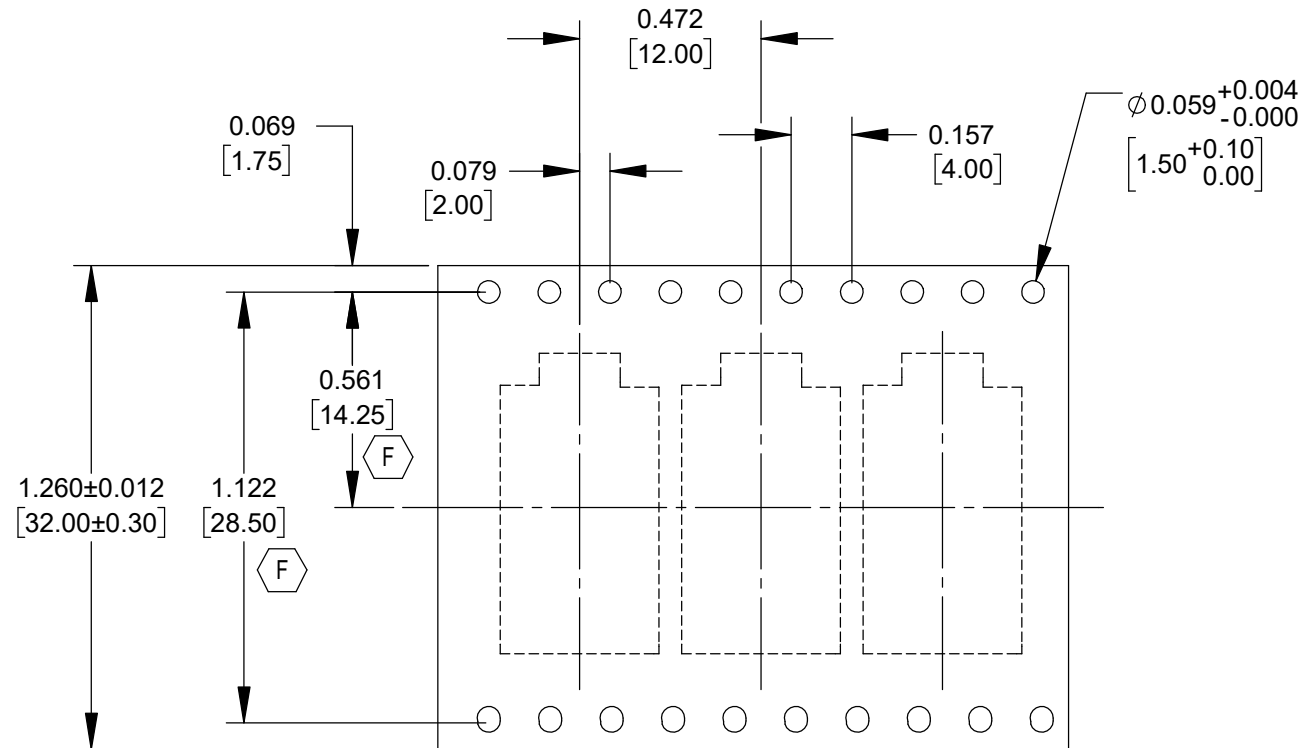
**DO NOT SCALE DRAWING**

THIS DRAWING DESCRIBES A DESIGN CONSIDERED PROPRIETARY IN NATURE, DEVELOPED AND MANUFACTURED BY SWITCHCRAFT INC. AND IS RELEASED ON A CONFIDENTIAL BASIS FOR IDENTIFICATION PURPOSES ONLY.										
SIZE	WIDTH	MULT	LBS/M	TEMPER						
FINISH					MATERIAL					
SPEC No.					SPEC No.					
FIRST USED ON					SCALE					
					6:1					
DATE DRAWN	BY	CHKD	APVD							
1/13/06	JL	GG	GG							
					1/13/06 1/13/06					
NAME 3.5 MM PHONE JACK SURFACE MOUNT, RoHS								PART No. 35RASMT2BHNTRX		REV F

**SolidWorks CAD File** (B)

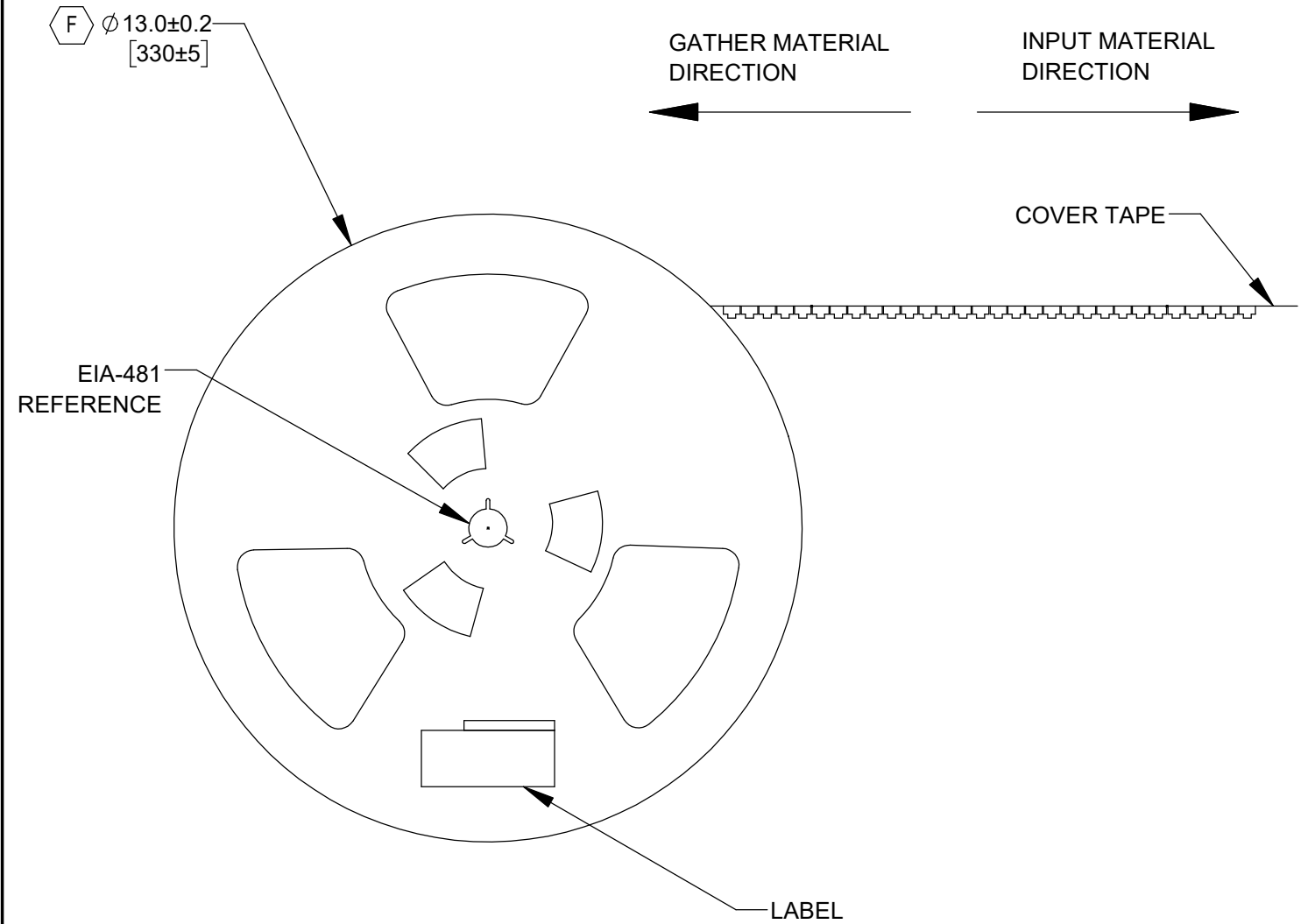
**A: CARRIER SIZE**

1. DETAIL SIZE REFERENCES: EIA-481
2. SPECIFICATIONS: 32 MM X 12 MM



**B: REEL SIZE**

1. QUANTITY: 700 PCS/REEL
2. MATERIAL: THERMOPLASTIC
3. 8 EMPTY AT START OF REEL



**CUSTOMER DRAWING**

SCALE NONE	<b>Switchcraft</b> <sup>®</sup>	
DATE DRAWN 1/13/06		
DRAWN BY JL	PART No. 35RASMT2BHNTRX	REV <b>F</b>