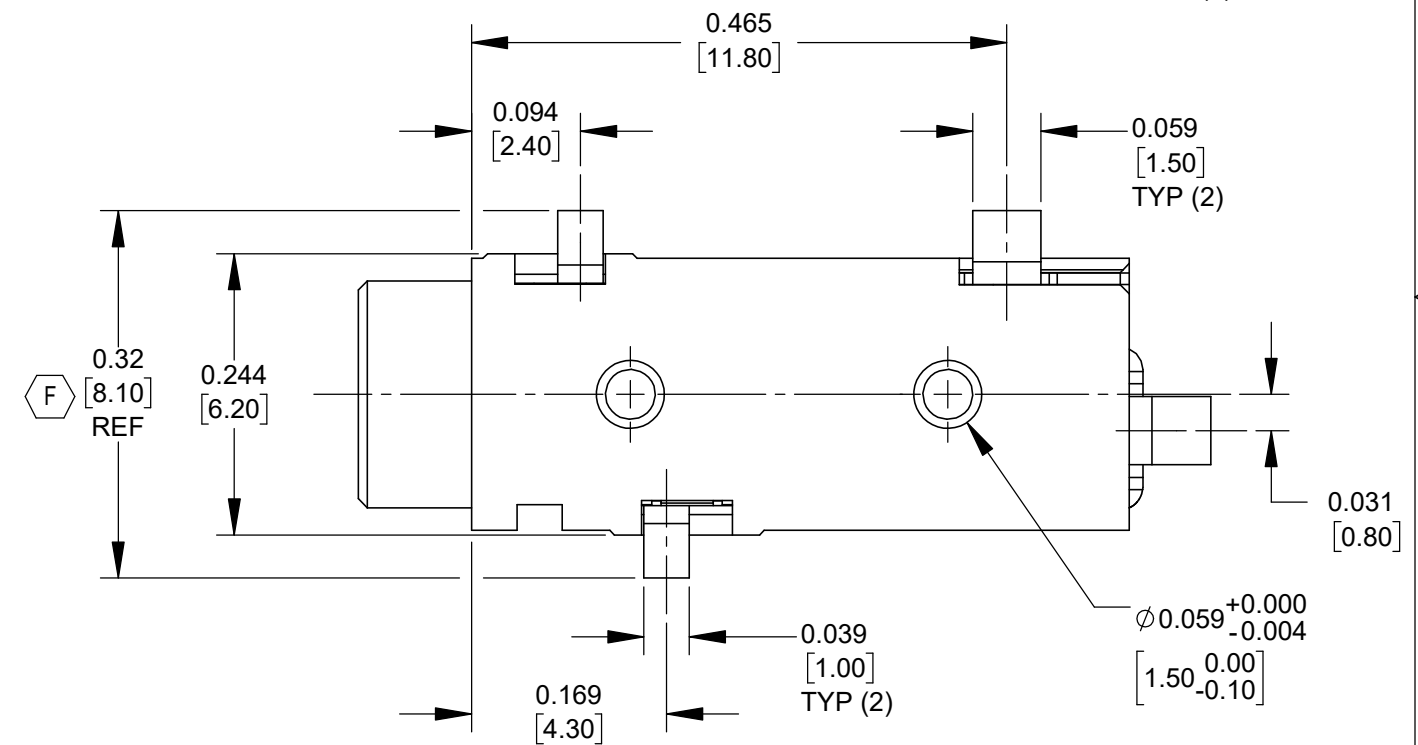
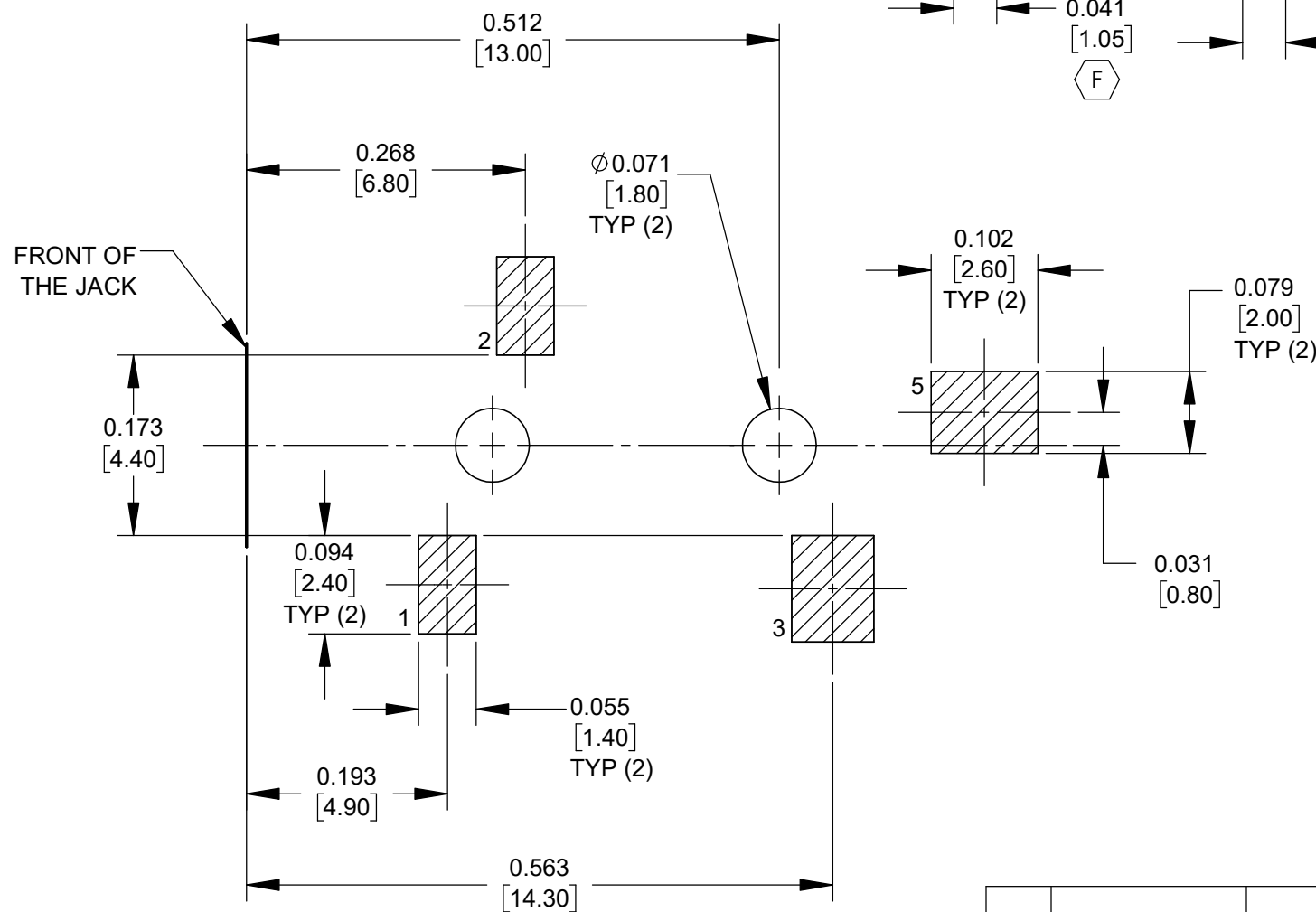
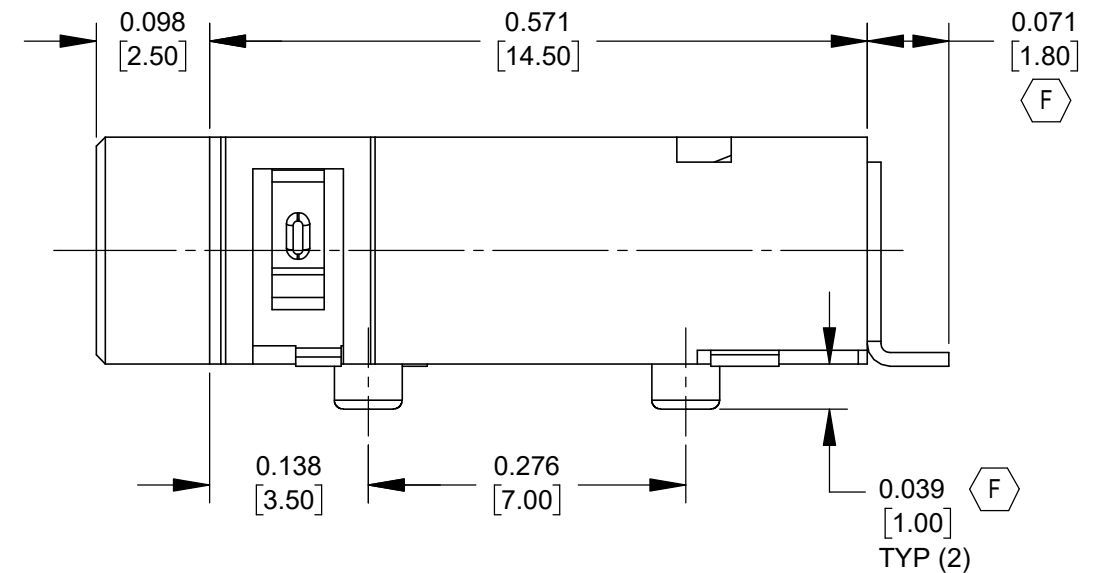
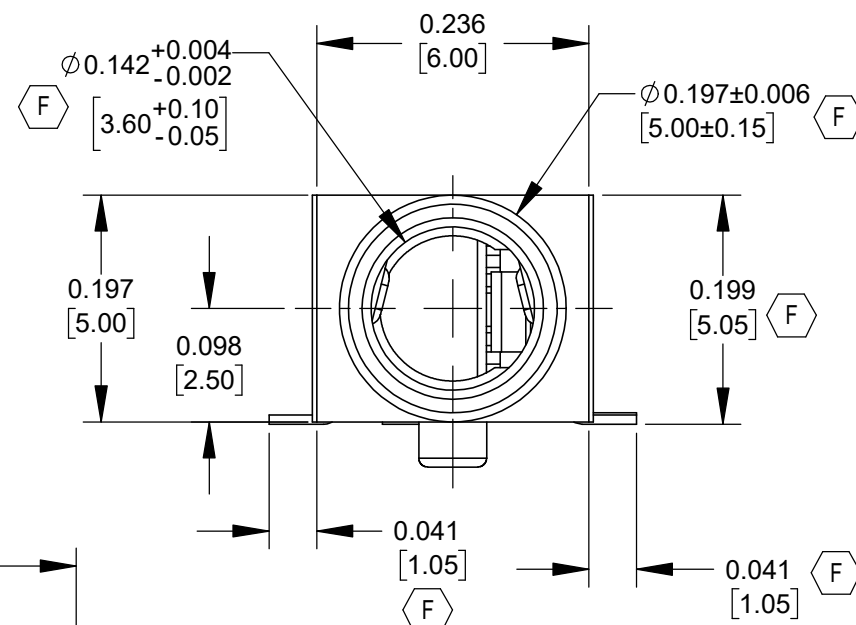
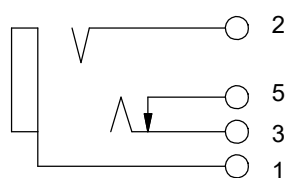


**NOTES:**

1. ALL DIMENSIONS ARE REFERENCE.
2. MATERIALS:  
HOUSING - THERMOPLASTIC, BLACK  
TERMINALS - COPPER ALLOY, GOLD FLASH
3. SUPPLIED ON TAPE AND REEL, SEE SHEET 2.
4. THIS PRODUCT IS RoHS COMPLIANT.



**CUSTOMER DRAWING**



**SCHMATIC**

**PCB LAYOUT COMPONENT SIDE**  
TOLERANCE  $\pm 0.002$  [0.05]

| REV | ECO NUMBER    | DATE     | BY | APVD |
|-----|---------------|----------|----|------|
| F   | 28625         | 09/28/23 | PC | TJK  |
| E   | REDRAWN 28478 | 02/23/22 | PC | TJK  |

UNLESS OTHERWISE SPECIFIED

- 1. ALL DIMENSIONS IN INCHES [mm]
- TWO PLACE DECIMALS  $\pm 0.02$  [0.5]
- THREE PLACE DECIMALS  $\pm 0.005$  [0.13]

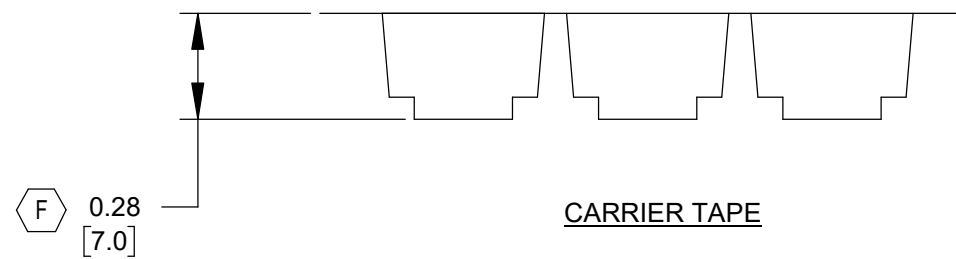
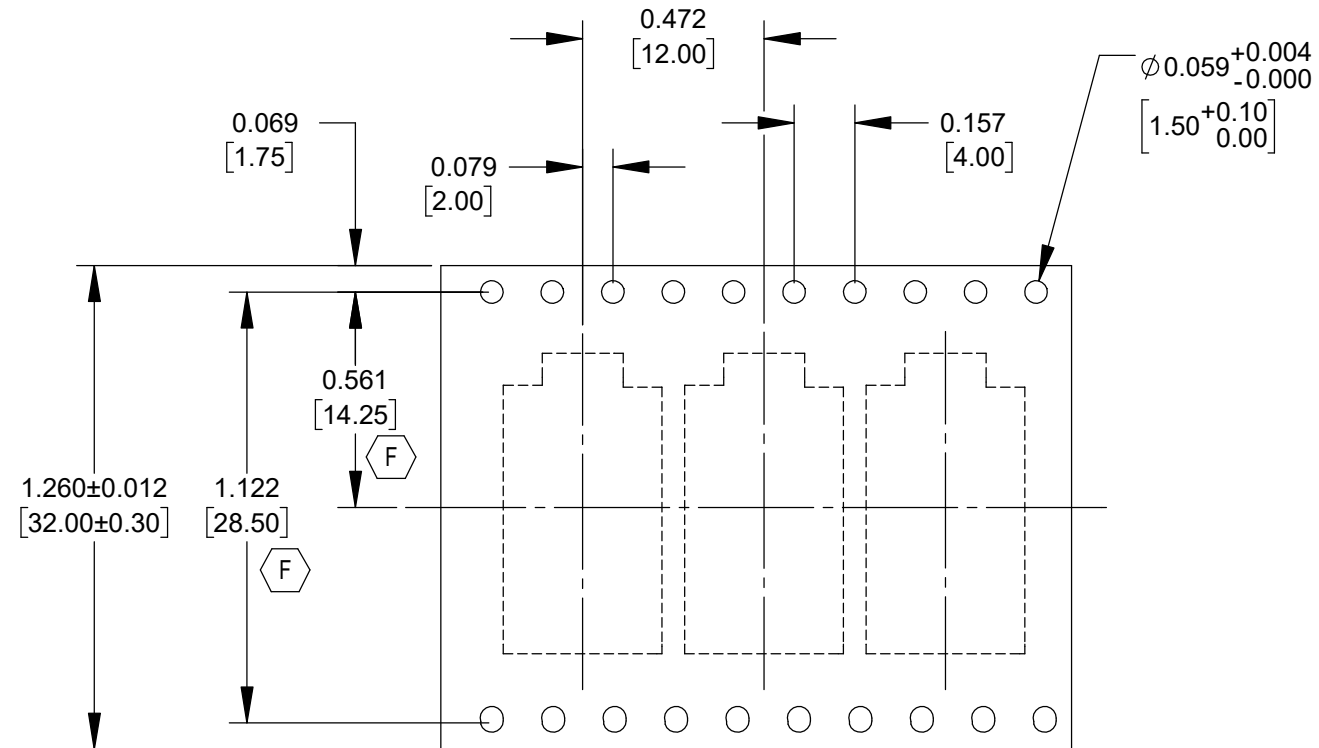
DO NOT SCALE DRAWING

|  |       |            |       |                        |                   |      |       |
|--|-------|------------|-------|------------------------|-------------------|------|-------|
| THIS DRAWING DESCRIBES A DESIGN CONSIDERED PROPRIETARY IN NATURE, DEVELOPED AND MANUFACTURED BY SWITCHCRAFT INC. AND IS RELEASED ON A CONFIDENTIAL BASIS FOR IDENTIFICATION PURPOSES ONLY. |       |            |       |                        |                   |      |       |
| SIZE   | WIDTH | MULT       | LBS/M | TEMPER                 | MATERIAL SPEC No. |      |       |
| FINISH SPEC No.  |       |            |       | SCALE 6:1              |                   |      |       |
| FIRST USED ON  |       | DATE DRAWN |       | BY                     | CHKD              | APVD |       |
|  |       | 1/13/06    |       | JL                     | GG                | GG   |       |
| NAME 3.5 MM PHONE JACK SURFACE MOUNT, RoHS   |       |            |       | PART No. 35RASMT3BHNTX |                   |      |       |
| SHEET 1 OF 2   |       |            |       |                        |                   |      | REV F |

SolidWorks CAD File **B**

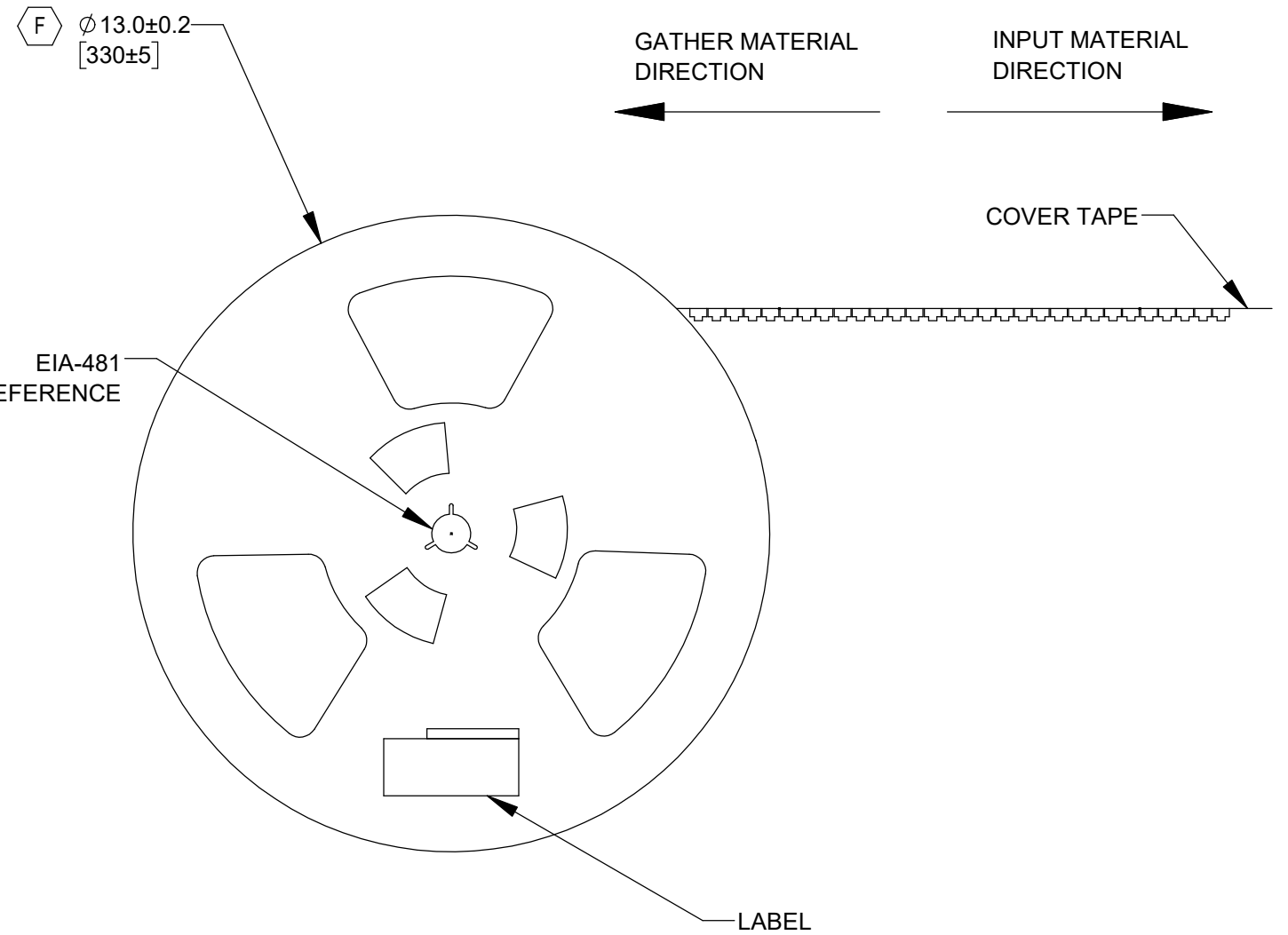
**A: CARRIER SIZE**

- 1. DETAIL SIZE REFERENCES: EIA-481
- 2. SPECIFICATIONS: 32 MM X 12 MM



**B: REEL SIZE**

- F 1. QUANTITY: 700 PCS/REEL
- 2. MATERIAL: THERMOPLASTIC
- F 3. 8 EMPTY AT START OF REEL



**CUSTOMER DRAWING**

|                       |                                 |          |
|-----------------------|---------------------------------|----------|
| SCALE<br>NONE         | <b>Switchcraft</b> <sup>®</sup> |          |
| DATE DRAWN<br>1/13/06 |                                 |          |
| DRAWN BY<br>JL        | PART No.<br>35RASMT3BHNTX       | REV<br>F |