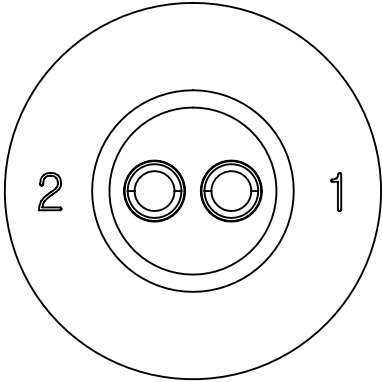
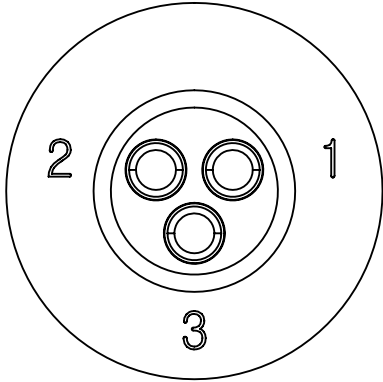


- NOTES:
- 1. PARTS TO BE BULK PACKED
  - 2. CONTACTS ARE ASSEMBLED INTO CONNECTOR.
  - 3. BLACK EPOXY SEALED ON BACK OF CONNECTOR

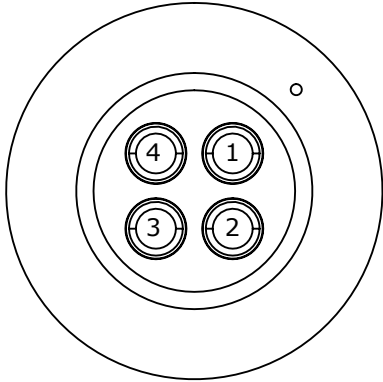
ASS'Y P/N	INSERT
4182-2PG-3ES	2 POS.
4182-3PG-3ES	3 POS.
4182-4PG-3ES	4 POS.



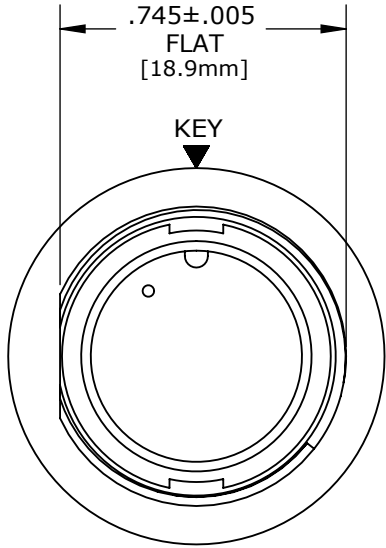
WIRE VIEW  
4182-2PG-3ES



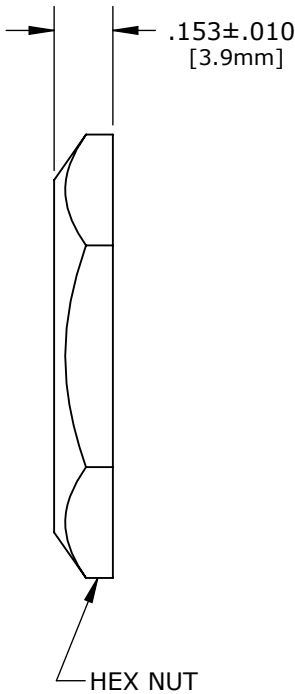
WIRE VIEW  
4182-3PG-3ES



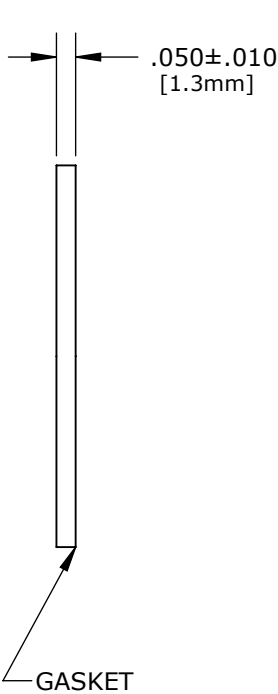
WIRE VIEW  
4182-4PG-3ES



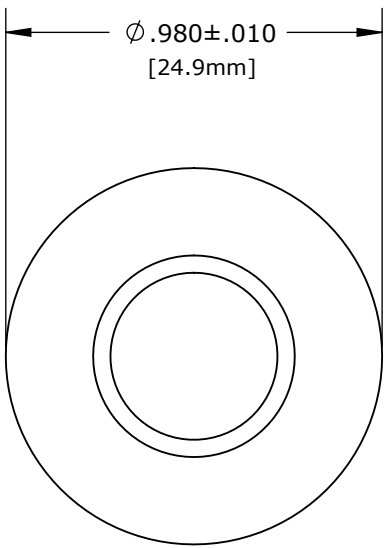
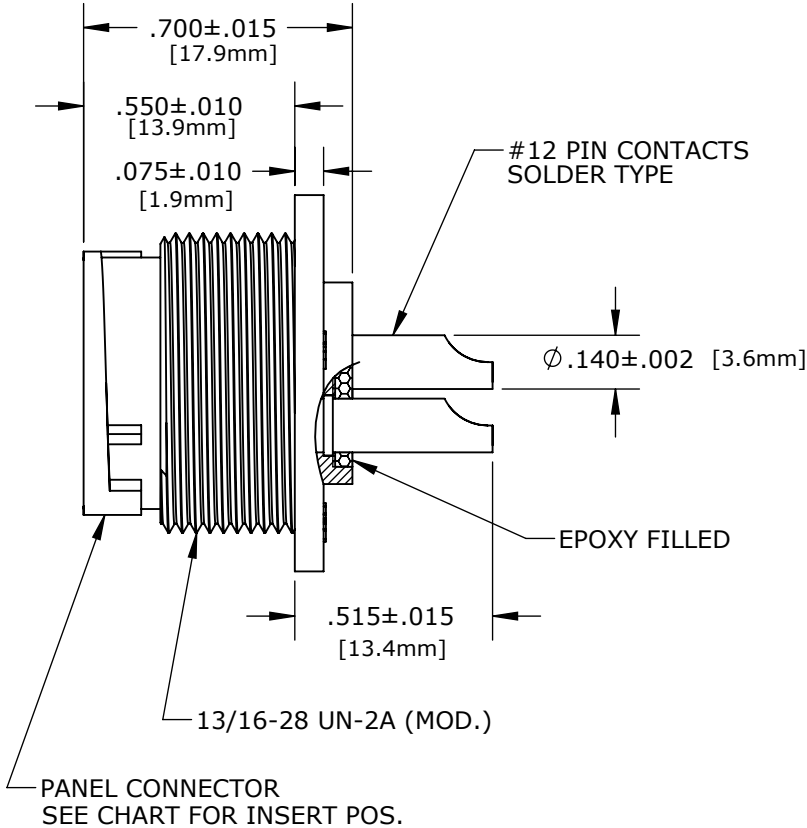
FACE VIEW



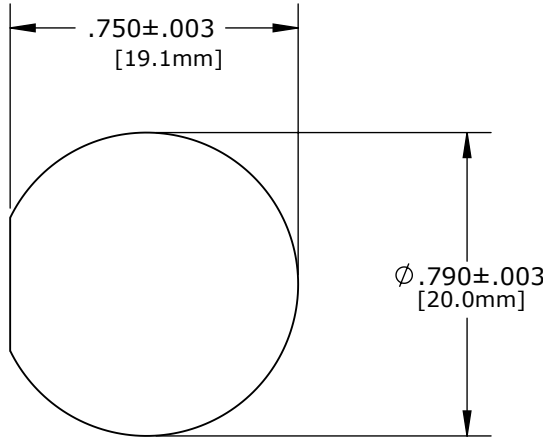
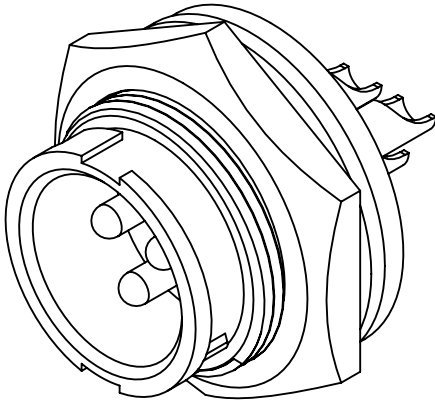
HEX NUT



GASKET



WIRE VIEW



RECOMMENDED  
OANEL CUT-OUT

DIMENSIONS IN BRACKET [ ] ARE METRIC.

A	AN	07-12-10	RELEASE PER DOR 10-2439KL	
	AN	01-16-09	DRAWING CREATED PER DOR 09-E149SL	
REV.	INIT.	DATE	DESCRIPTION	
ALL INFORMATION ILLUSTRATED IS THE PROPERTY OF CONXALL CORPORATION. UNAUTHORIZED DUPLICATION OR DISTRIBUTION OF THIS DOCUMENT IS PROHIBITED.			ORIG. DRAWN BY: AN	DATE: 01-16-09
			CHECKED BY:	
ALL UNITS ARE IN FEET, INCHES, FRACTION OF INCHES AND DECIMALS. UNLESS OTHERWISE SPECIFIED TOLERANCES: 3 PLACE DECIMALS ±.010 ANGLES ±1° FRACTIONS ±1/16 = CRITICAL CHARACTERISTIC FLAG PER SPEC. XXXX			APPROVED BY:	TITLE: PANEL CONNECTOR ASS'Y KIT #12 PIN CONTACTS MULTI-CON-X
			SCALE: NTS SIZE: B SHEET: 1 OF 1	CUSTOMER: STANDARD PRODUCT
FILE: 4182-XPG-3ES			DIRECTORY: SLW	PART NUMBER: 4182-XPG-3ES
				REV A