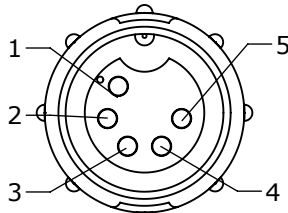
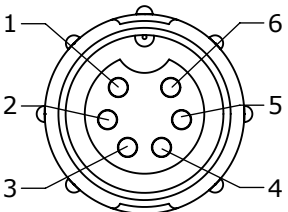


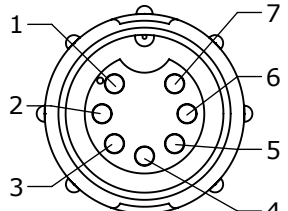
FACE VIEW
ASSY: 5280-4SG-3XX



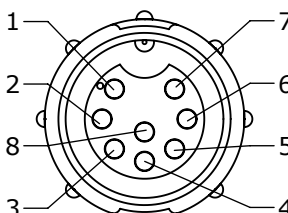
FACE VIEW
ASSY: 5280-5SG-3XX



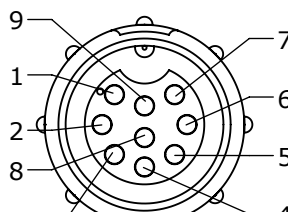
FACE VIEW
ASSY: 5280-6SG-3XX



FACE VIEW
5280-7SG-3XX

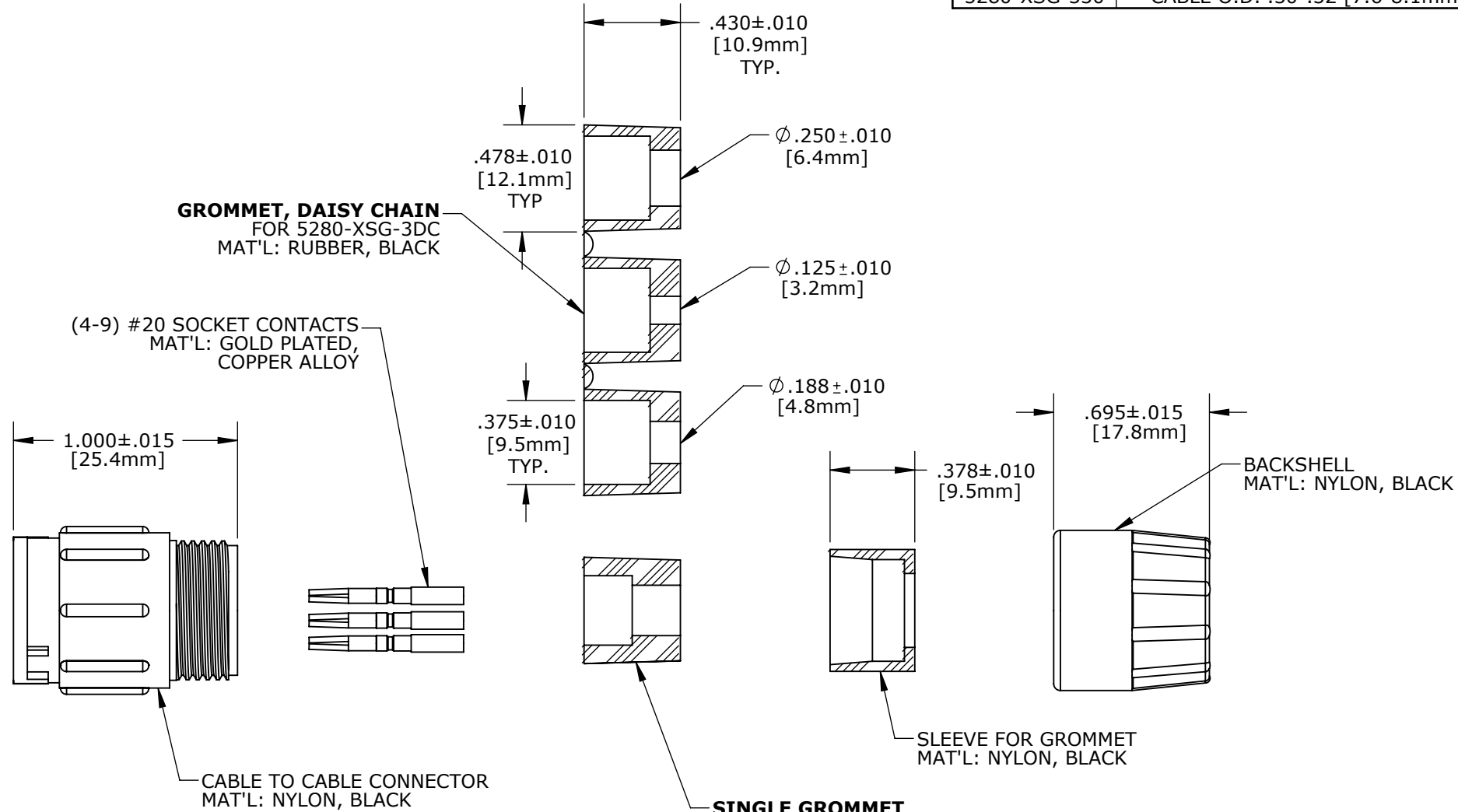


FACE VIEW
ASSY: 5280-8SG-3XX



FACE VIEW
ASSY: 5280-9SG-3XX

- NOTES:
1. ALL PARTS TO BE BULK PACKED.
2. ALL DIMENSIONS ARE REFERENCE ONLY.



SHOWN ASSEMBLED KIT
FOR CUSTOMER REFERENCE ONLY

(B)

- SINGLE GROMMET**
MAT'L: SANTOPRENE, BLACK
- | | |
|--------------|---|
| 5280-XSG-315 | .156 I.D. FOR CABLES .15-.17 [3.8-4.3mm] O.D. |
| 5280-XSG-318 | .187 I.D. FOR CABLES .18-.20 [4.6-5.1mm] O.D. |
| 5280-XSG-321 | .225 I.D. FOR CABLES .21-.23 [5.3-5.8mm] O.D. |
| 5280-XSG-324 | .250 I.D. FOR CABLES .24-.27 [6.1-6.8mm] O.D. |
| 5280-XSG-328 | .285 I.D. FOR CABLES .28-.29 [7.1-7.4mm] O.D. |
| 5280-XSG-330 | .312 I.D. FOR CABLES .30-.32 [7.6-8.1mm] O.D. |

KIT P/N	GROMMET SIZE
5280-XSG-3DC	DAISY CHAIN
5280-XSG-315	CABLE O.D. .15-.17 [3.8-4.3mm]
5280-XSG-318	CABLE O.D. .18-.20 [4.6-5.1mm]
5280-XSG-321	CABLE O.D. .21-.23 [5.3-5.8mm]
5280-XSG-324	CABLE O.D. .24-.27 [6.1-6.8mm]
5280-XSG-328	CABLE O.D. .28-.29 [7.1-7.4mm]
5280-XSG-330	CABLE O.D. .30-.32 [7.6-8.1mm]

KIT P/N	NO. OF CONTACTS
5280-4SG-3XX	4 #20
5280-5SG-3XX	5 #20
5280-6SG-3XX	6 #20
5280-7SG-3XX	7 #20
5280-8SG-3XX	8 #20
5280-9SG-3XX	9 #20
5280-XSG-3XX	

GROMMET SIZE FOR SINGLE GROMMET OR "DC" FOR DAISY CHAIN

NO. OF CONTACTS

CUSTOMER APPROVAL

THIS DOCUMENT CONTAINS CONFIDENTIAL INFORMATION PROPRIETARY TO CONXALL CORPORATION. ANY REPRODUCTION, DISCLOSURE, OR USE OF THIS DOCUMENT /INFORMATION IS EXPRESSLY PROHIBITED UNLESS AUTHORIZED IN WRITING BY CONXALL CORPORATION.

APPROVED BY: _____

DATE: _____

RoHS COMPLIANT

B	AN	03-11-11	ADDED TOLERANCES AND MATERIALS. ADDED ASSEMBLED VIEW. PER ECR 7783
A	BZ	08-20-09	DRAWING CREATED PER DOR 09-E149SL
REV.	INIT.	DATE	DESCRIPTION
	BZ	08-20-09	ALL INFORMATION ILLUSTRATED IS THE PROPERTY OF "CONXALL CORPORATION." UNAUTHORIZED DUPLICATION OR DISTRIBUTION OF THIS DOCUMENT IS PROHIBITED.
ALL UNITS ARE IN FEET, INCHES, FRACTION OF INCHES AND DECIMALS.			<p>601 E. WILDWOOD VILLA PARK, IL 60181</p>
SCALE	SIZE	SHEET	
NTS	B	1 OF 1	CABLE TO CABLE CONNECTOR KIT 4-9 #20 SOCKET CONTACTS MULTI-CON-X
FILE:	DIRECTORY:	PART NUMBER:	CUSTOMER: STANDARD PRODUCT
5280-XSG-3XX	SLW	5280-XSG-3XX	REV B

DIMENSIONS IS BRACKETS [] ARE METRIC