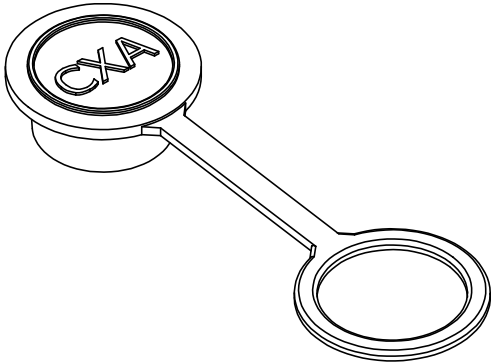
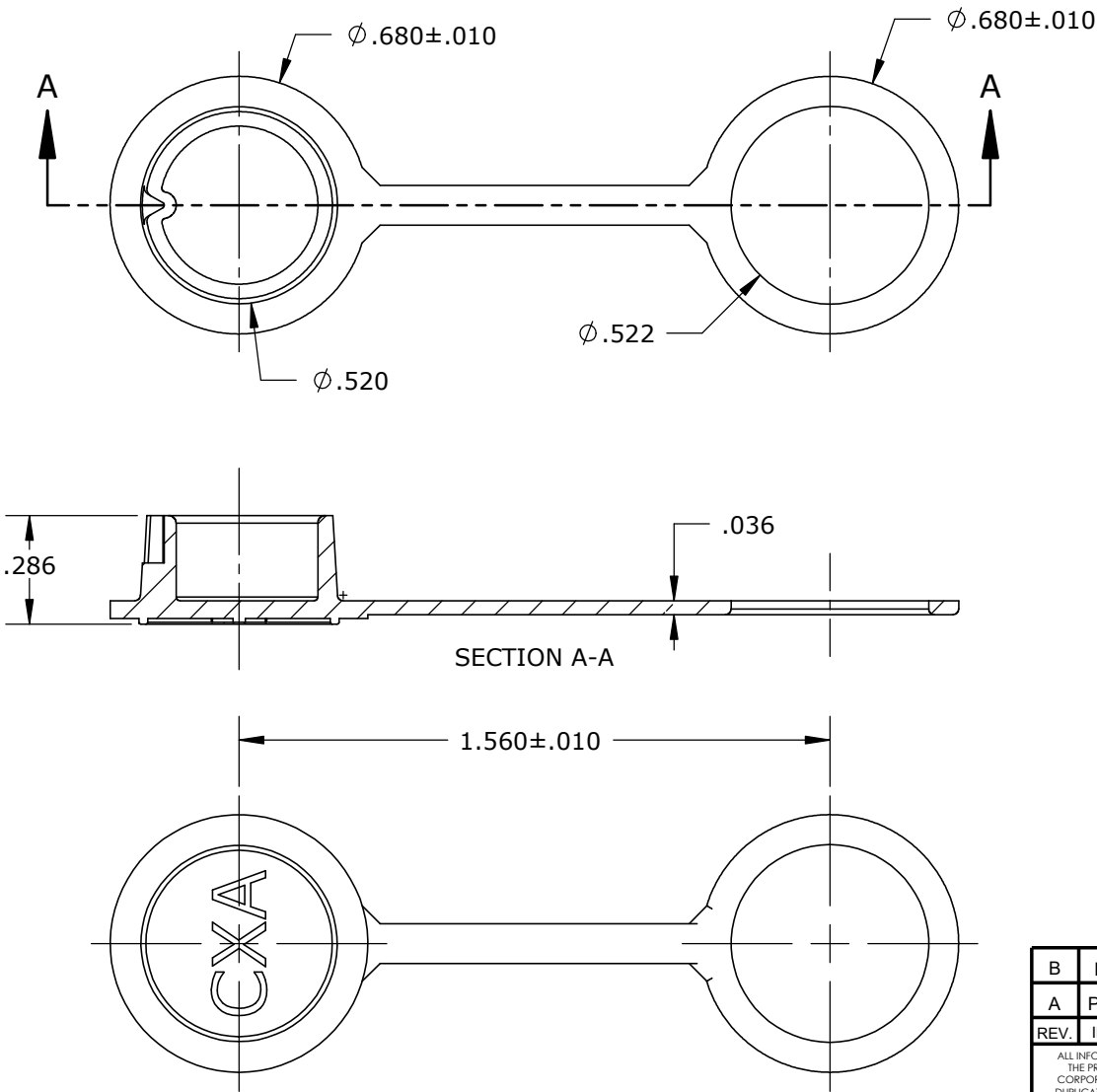


- NOTES:
- 1. MATERIAL: SANTOPRENE, BLACK
  - 2. ALL DIMENSIONS FOR REFERENCE ONLY.



CUSTOMER APPROVAL

THIS DOCUMENT CONTAINS CONFIDENTIAL INFORMATION PROPRIETARY TO CONXALL CORPORATION. ANY REPRODUCTION, DISCLOSURE, OR USE OF THIS DOCUMENT /INFORMATION IS EXPRESSLY PROHIBITED UNLESS AUTHORIZED IN WRITING BY CONXALL CORPORATION.

APPROVED BY: \_\_\_\_\_

DATE: \_\_\_\_\_

B	BZ	06-28-10	UPDATED DRAWING PER FAI, ECR 7518		
A	PAK	04/28/10	DRAWING CREATED PER DOR 09-1638KL-2		
REV.	INIT.	DATE	DESCRIPTION		
<div>ALL INFORMATION ILLUSTRATED IS THE PROPERTY OF "CONXALL CORPORATION." UNAUTHORIZED DUPLICATION OR DISTRIBUTION OF THIS DOCUMENT IS PROHIBITED.</div>			ORIG. DRAWN BY:	DATE:	<div>conxall</div> <div>601 E. WILDWOOD VILLA PARK, IL 60181</div>
			PAK	04/14/10	
<div>ALL UNITS ARE IN FEET, INCHES, FRACTION OF INCHES AND DECIMALS.</div> <div>UNLESS OTHERWISE SPECIFIED TOLERANCES:</div> <div>3 PLACE DECIMALS ±.005</div> <div>ANGLES ±1°</div> <div>FRACTIONS ±1/16</div> <div>▷ = CRITICAL CHARACTERISTIC FLAG PER SPEC. XXXX</div>			CHECKED BY:		<div>TITLE:</div> <div>DUST COVER</div> <div>CABLE, MULTI-GENDER</div> <div>MINI-CON-X</div> <div>CUSTOMER: STANDARD PRODUCT</div>
			APPROVED BY:		
SCALE		SIZE	SHEET		PART NUMBER: 6295C
NTS		A	1 of 1		
FILE:		DIRECTORY:		REV	
6295C		SLW		B	