

CUSTOMER PRINT

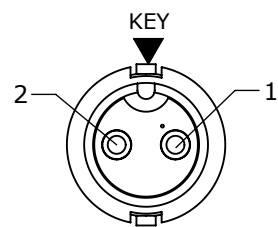
PART NUMBER: 6382-XPG-3XX

KIT P/N	NO. OF CONTACTS
6382-2PG-3XX	2 #16
6382-3PG-3XX	3 #16
6382-4PG-3XX	4 #16
6382-XPG-3XX	

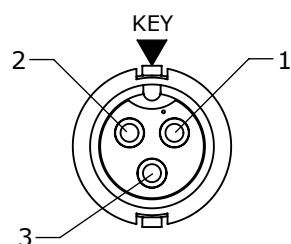
GROMMET SIZE FOR SINGLE GROMMET OR "DC" FOR DAISY CHAIN

NO. OF CONTACTS

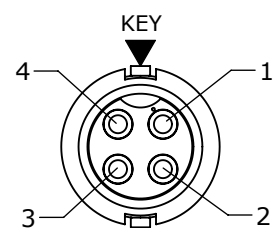
- NOTES:  
 1. ALL PARTS TO BE BULK PACKED.  
 2. CONTACT ARE INSTALLED INTO CONNECTOR  
 3. SEE DRAWING HPMISTD FOR HOLE PATTERN



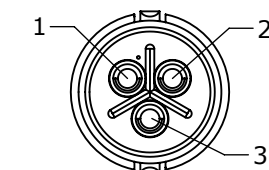
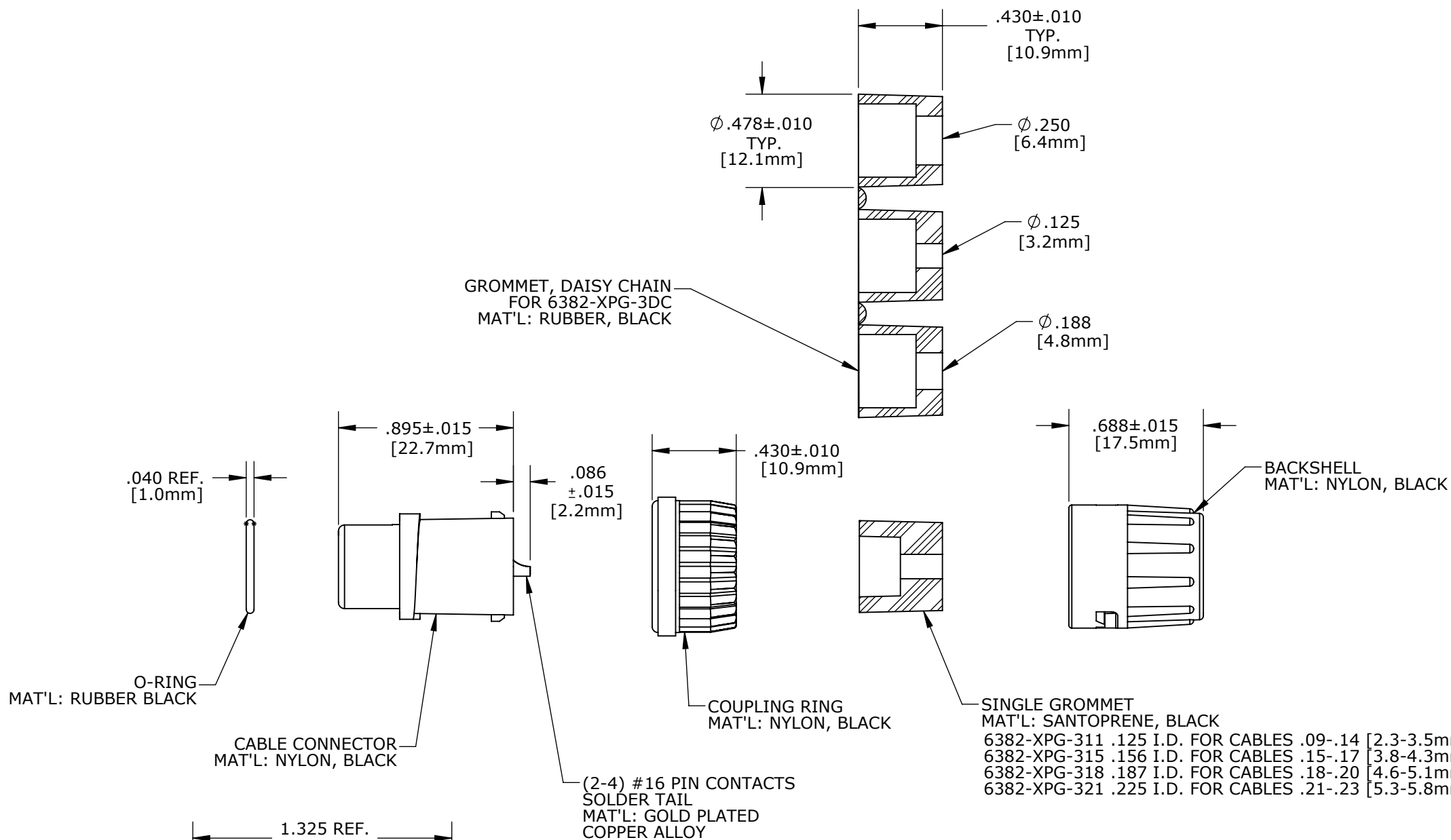
**FACE VIEW**  
6382-2PG-3XX



**FACE VIEW**  
6382-3PG-3XX



**FACE VIEW**  
6382-4PG-3XX



**WIRE VIEW**  
6382-3PG-3XX SHOWN

**SHOWN ASSEMBLED KIT**  
FOR CUSTOMER REFERENCE ONLY

DIMENSIONS IS BRACKETS [ ] ARE METRIC

**CUSTOMER APPROVAL**

THIS DOCUMENT CONTAINS CONFIDENTIAL INFORMATION PROPRIETARY TO CONXALL CORPORATION. ANY REPRODUCTION, DISCLOSURE, OR USE OF THIS DOCUMENT /INFORMATION IS EXPRESSLY PROHIBITED UNLESS AUTHORIZED IN WRITING BY CONXALL CORPORATION.

APPROVED BY: \_\_\_\_\_

DATE: \_\_\_\_\_

**RoHS COMPLIANT**

REV.	INIT.	DATE	DESCRIPTION
A	AN	04-11-11	DRAWING CREATED PER DOR 11-E149SL
ALL INFORMATION ILLUSTRATED IS THE PROPERTY OF "CONXALL CORPORATION". UNAUTHORIZED DUPLICATION OR DISTRIBUTION OF THIS DOCUMENT IS PROHIBITED.			601 E. WILDWOOD VILLA PARK, IL 60181
ALL UNITS ARE IN FEET, INCHES, FRACTION OF INCHES AND DECIMALS. UNLESS OTHERWISE SPECIFIED TOLERANCES: 3 PLACE DECIMALS ±.010 ANGLES ±1° FRACTIONS ±1/16 ▽ = CRITICAL CHARACTERISTIC FLAG PER SPEC. XXXX			
ORIG. DRAWN BY: AN DATE: 04-11-11 CHECKED BY:		TITLE: CABLE CONNECTOR KIT (2-4) #16 PIN CONTACTS, SOLDER TAIL MINI-CON-X CUSTOMER: STANDARD PRODUCT	
APPROVED BY:		SCALE: NTS SIZE: B SHEET: 1 OF 1	PART NUMBER: 6382-XPG-3XX REV: A