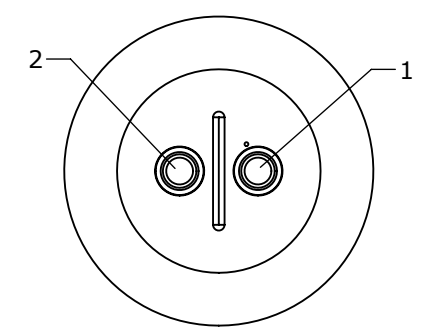
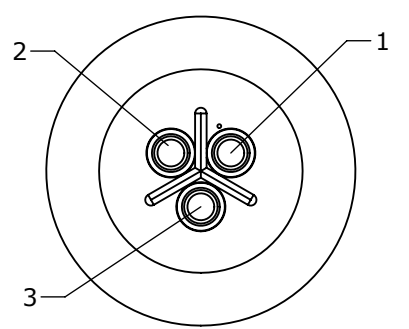


ASSY P/N	CONTACT QTY.
7380-2PG-300	2 #16
7380-3PG-300	3 #16
7380-4PG-300	4 #16
7380-5PG-300	5 #16

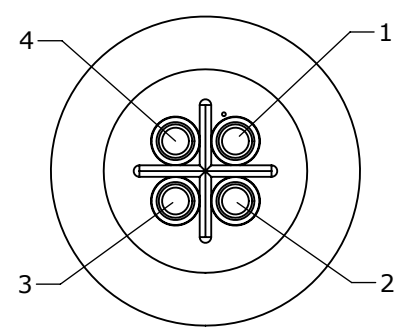
NOTES:  
 1. ALL PARTS TO BE BULK PACKED.  
 2. SEE DRAWING HPMISTD FOR HOLE PATTERN.



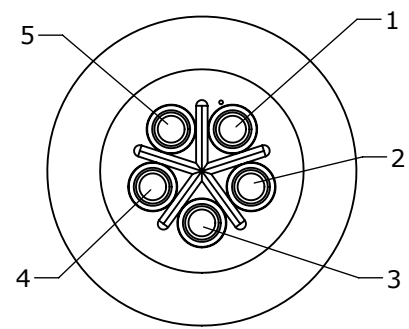
**WIRING VIEW**  
7380-2PG-300



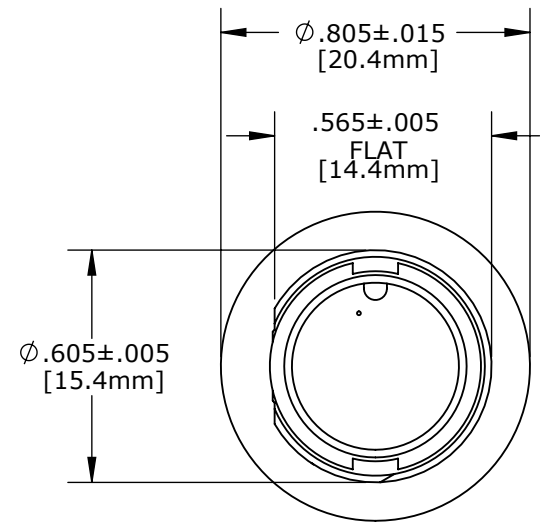
**WIRING VIEW**  
7380-3PG-300



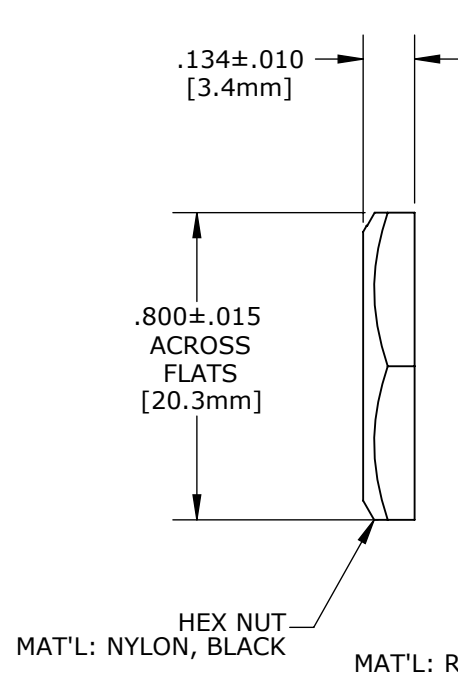
**WIRING VIEW**  
7380-4PG-300



**WIRING VIEW**  
7380-5PG-300

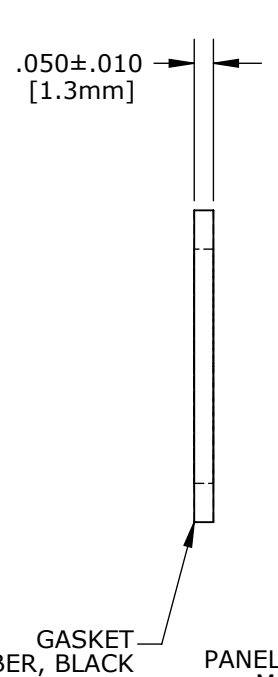


**FACE FACE**

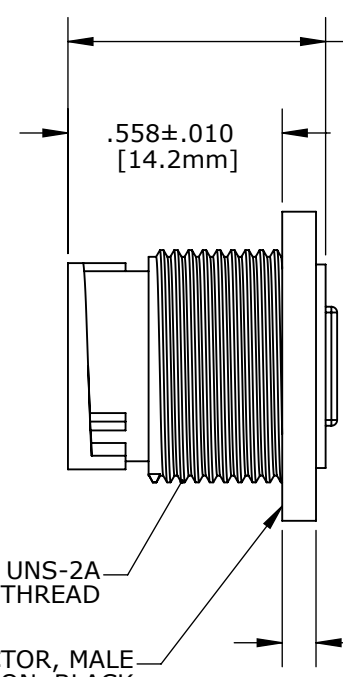


HEX NUT  
MAT'L: NYLON, BLACK

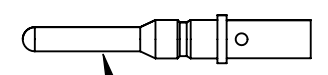
GASKET  
MAT'L: RUBBER, BLACK



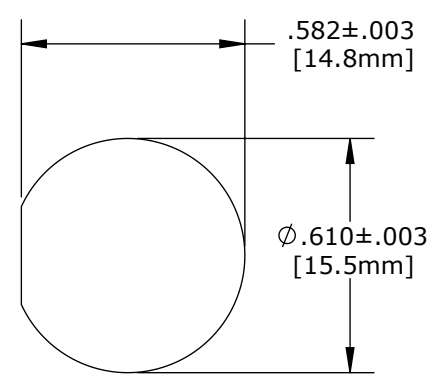
PANEL CONNECTOR, MALE  
MAT'L: NYLON, BLACK



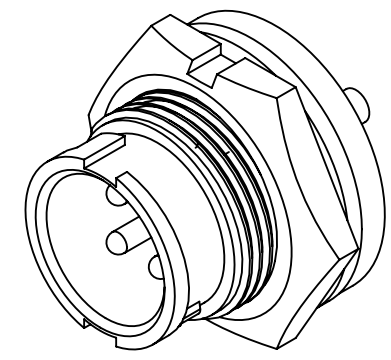
.671±.015 FOR 2, 3 & 4 POS. [17.0mm]  
 .646±.015 FOR 5 POS. [16.4mm]



(2-5) #16 PIN CONTACTS  
CRIMP TAIL  
MAT'L: GOLD PLATED COPPER ALLOY



**RECOMMENDED  
PANEL CUT OUT**



**SHOWN ASSEMBLED KIT**  
FOR CUSTOMER REFERENCE ONLY

**CUSTOMER APPROVAL**  
 THIS DOCUMENT CONTAINS CONFIDENTIAL INFORMATION PROPRIETARY TO CONXALL CORPORATION. ANY REPRODUCTION, DISCLOSURE, OR USE OF THIS DOCUMENT /INFORMATION IS EXPRESSLY PROHIBITED UNLESS AUTHORIZED IN WRITING BY CONXALL CORPORATION.  
 APPROVED BY: \_\_\_\_\_  
 DATE: \_\_\_\_\_

DIMENSIONS IN BRACKETS [ ] ARE METRIC

**RoHS COMPLIANT**

A	AN	02-24-11	DRAWING CREATED PER DOR 11-E149SL
REV.	INIT.	DATE	DESCRIPTION
	AN	02-24-11	
<small>ALL INFORMATION ILLUSTRATED IS THE PROPERTY OF CONXALL CORPORATION. UNAUTHORIZED DUPLICATION OR DISTRIBUTION OF THIS DOCUMENT IS PROHIBITED.</small>			 601 E. WILDWOOD VILLA PARK, IL 60181
<small>ALL UNITS ARE IN FEET, INCHES, FRACTION OF INCHES AND DECIMALS.</small>			
<small>UNLESS OTHERWISE SPECIFIED TOLERANCES:          3 PLACE DECIMALS ±.010          ANGLES ±1°          FRACTIONS ±1/16</small>			<b>TITLE:</b> PANEL MOUNT ASSEMBLY (2-5) #16 PIN CONTACTS MINI-CON-X <b>CUSTOMER:</b> STANDARD PRODUCT
FILE:	DIRECTORY:	PART NUMBER:	REV
7380-XPG-300	SLW	7380-XPG-300	A

CUSTOMER PRINT

PART NUMBER: 7380-XPG-300