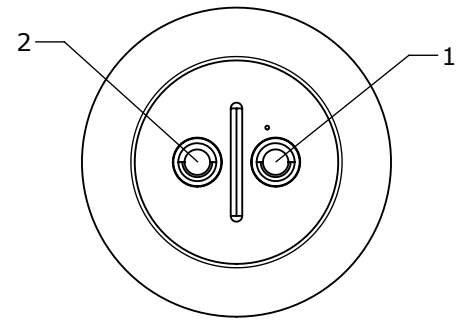
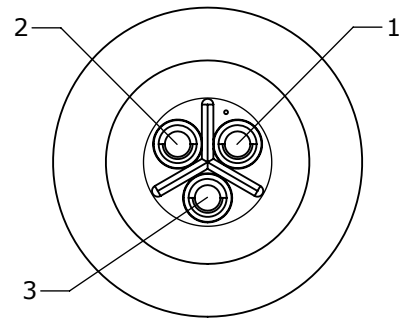


ASSY P/N	CONTACT QTY.	"X" DIM.
7382-2PG-300	2	0.220
7382-3PG-300	3	0.220
7382-4PG-300	4	0.220
7382-5PG-300	5	0.188

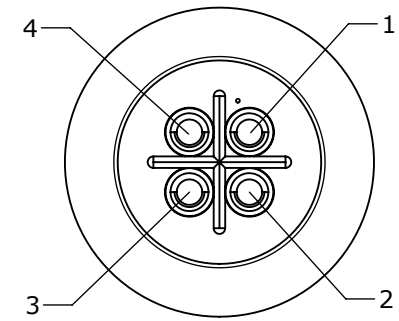
NOTES:
 1. ALL PARTS TO BE BULK PACKED.
 2. CONTACTS ARE INSTALLED IN CONNECTOR.
 3. ALL DIMENSIONS ARE REFERENCE ONLY.



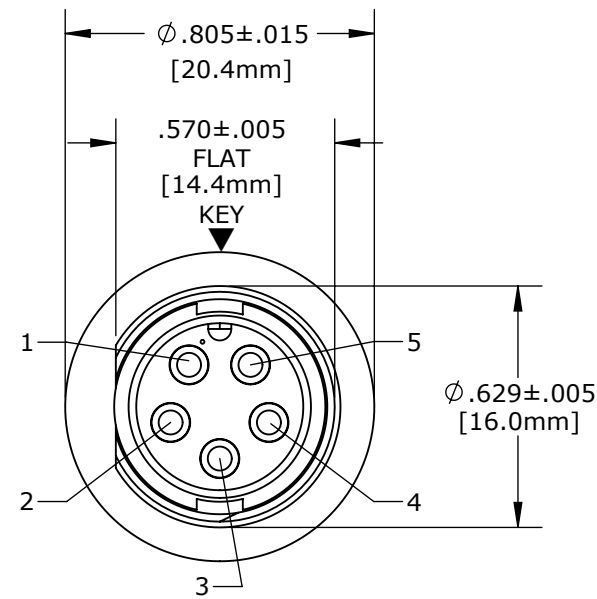
WIRING END
 ASSY: 7382-2PG-300



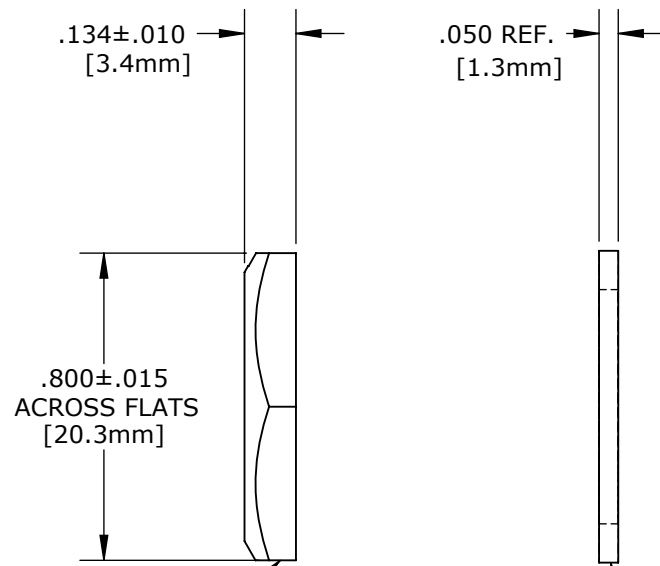
WIRING END
 ASSY: 7382-3PG-300



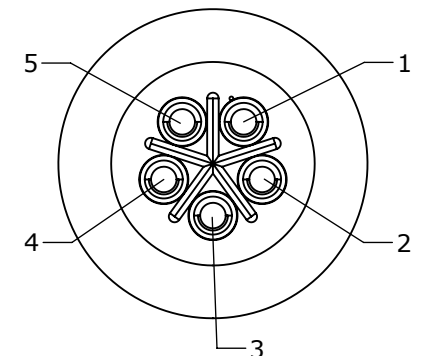
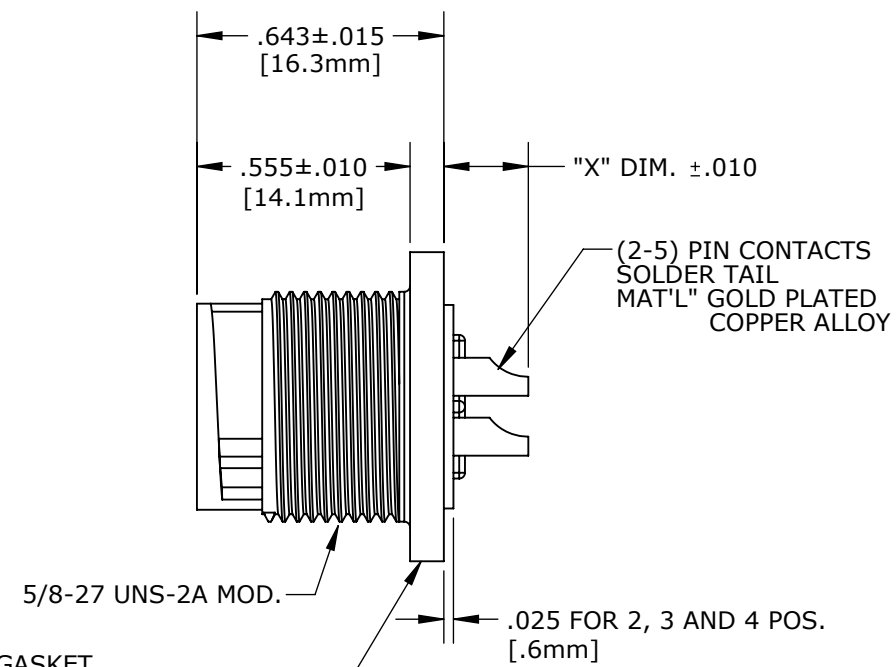
WIRING END
 ASSY: 7382-4PG-300



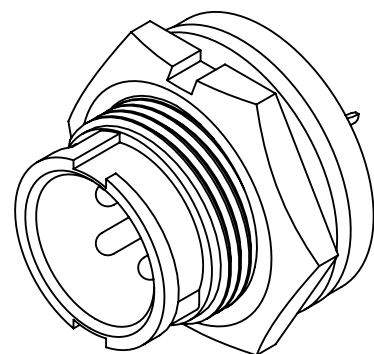
MATING FACE
 ASSY: 7382-5PG-300



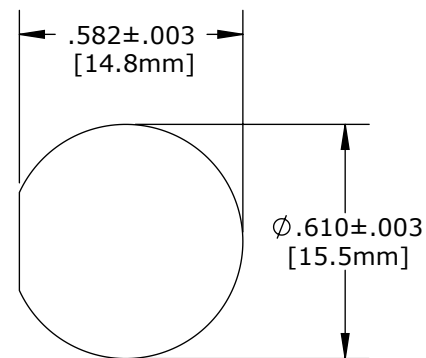
HEX NUT
 MAT'L: THERMOPLASTIC, BLACK



WIRING END
 7382-5PG-300 SHOWN



ASSEMBLED VIEW
 FOR CUSTOMER REFERENCE ONLY
 7382-4PG-300 SHOWN



RECOMMENDED PANEL CUT-OUT


DIMENSIONS IN BRACKET [] ARE METRIC.

CUSTOMER APPROVAL

THIS DOCUMENT CONTAINS CONFIDENTIAL INFORMATION PROPRIETARY TO CONXALL CORPORATION. ANY REPRODUCTION, DISCLOSURE, OR USE OF THIS DOCUMENT / INFORMATION IS EXPRESSLY PROHIBITED UNLESS AUTHORIZED IN WRITING BY CONXALL CORPORATION.

APPROVED BY: _____
 DATE: _____

RoHS COMPLIANT

C	PD	10-03-12	UPDATE MANUFACTURING DRAWING PER ECR 8312
B	AN	06-27-12	ADDED CONTACT HEIGHT DIM.S, TOLERANCES AND MATERIALS, SHOWN WIRING END INSTEAD OF MATING FACE, PER DOR 12-E149SL #17 / ECR 8198
A	BZ	05-08-09	DRAWING CREATED PER DOR 09-E149SL
REV.	INIT.	DATE	DESCRIPTION
	BZ	05-08-09	ALL INFORMATION ILLUSTRATED IS THE PROPERTY OF "CONXALL CORPORATION". UNAUTHORIZED DUPLICATION OR DISTRIBUTION OF THIS DOCUMENT IS PROHIBITED.
APPROVED BY:		DATE:	 601 E. WILDWOOD VILLA PARK, IL 60181
SCALE	SIZE	SHEET	
NTS	B	1 OF 1	TITLE: PANEL MOUNT ASSEMBLY (2-5) PIN CONTACTS MINI-CON-X
FILE:	DIRECTORY:	PART NUMBER:	CUSTOMER: STANDARD PRODUCT
7382-XPG-300	SLW	7382-XPG-300	REV C

CUSTOMER PRINT

PART NUMBER: 7382-XPG-300