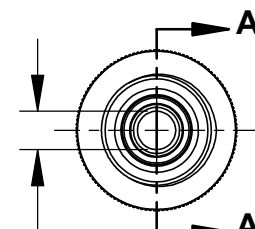
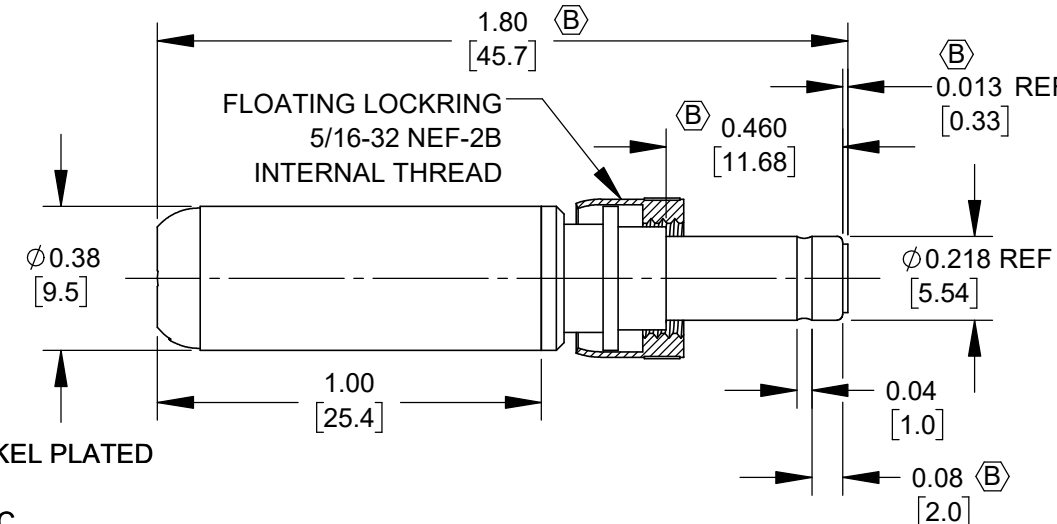
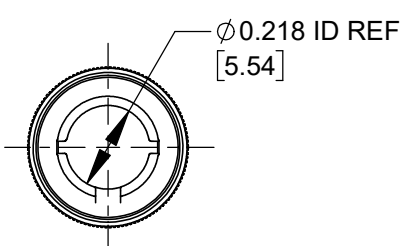


PART NUMBER	HANDLE COLOR
761KZ	BLACK
766KZ	RED



NOTES:

1. MATERIALS:

CONDUCTORS & LOCKRING - BRASS, NICKEL PLATED
TERMINALS - BRASS, TIN PLATED
INSULATORS & HANDLE - THERMOPLASTIC

2. THIS PRODUCT IS RoHS COMPLIANT.

CUSTOMER DRAWING

					THIS DRAWING DESCRIBES A DESIGN CONSIDERED PROPRIETARY IN NATURE, DEVELOPED AND MANUFACTURED BY SWITCHCRAFT INC. AND IS RELEASED ON A CONFIDENTIAL BASIS FOR IDENTIFICATION PURPOSES ONLY.				
					SIZE *	WIDTH *	MULT *	LBS/M *	TEMPER *
					FINISH *	MATERIAL *			
					SPEC No. *	SPEC No. *			
					FIRST USED ON *	SCALE 2:1			
B	28735	04/21/25	PC	TJK	DATE DRAWN	BY	CHKD	APVD	Switchcraft®
A	28644	02/14/24	PC	TJK	10/24/19	AM	03/06/24	03/06/24	
REV	ECO NUMBER	DATE	BY	APVD	NAME Ø 0.10 [2.5]mm x 0.475 LONG IMPROVED POWER PLUG W/LOCKRING, RoHS			PART No.	REV
REVISIONS					DO NOT SCALE DRAWING			761KZ-766KZ	B

SolidWorks CAD File

