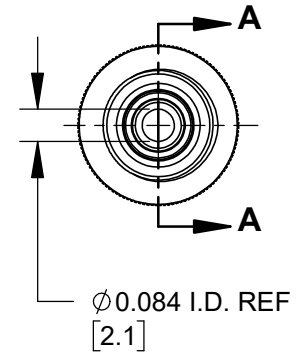
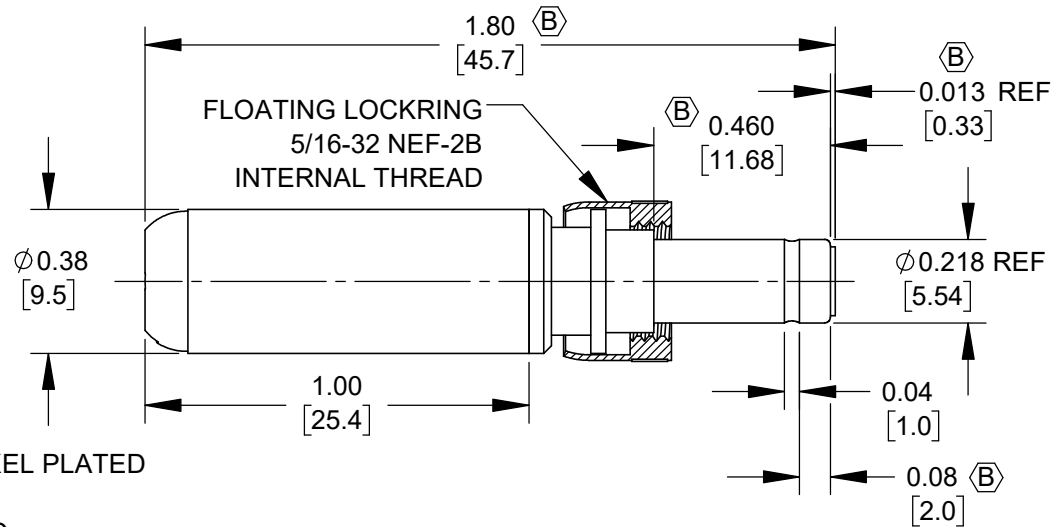
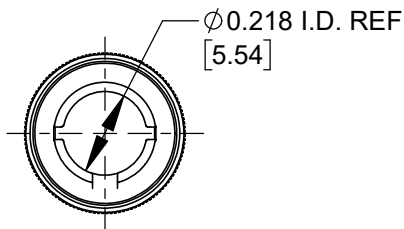


PART NUMBER	HANDLE COLOR
767KZ	BLACK
768KZ	RED



- NOTES:
- MATERIALS:
 CONDUCTORS & LOCKRING - BRASS, NICKEL PLATED
 TERMINALS - BRASS, TIN PLATED
 INSULATORS & HANDLE - THERMOPLASTIC

2. THIS PRODUCT IS RoHS COMPLIANT

CUSTOMER DRAWING

					<div>UNLESS OTHERWISE SPECIFIED</div> <div>1. ALL DIMENSIONS IN INCHES [mm]</div> <div>- TWO PLACE DECIMALS ±0.02 [0.5]</div> <div>- THREE PLACE DECIMALS ±0.005 [0.13]</div>	THIS DRAWING DESCRIBES A DESIGN CONSIDERED PROPRIETARY IN NATURE, DEVELOPED AND MANUFACTURED BY SWITCHCRAFT INC. AND IS RELEASED ON A CONFIDENTIAL BASIS FOR IDENTIFICATION PURPOSES ONLY.					
						SIZE *	WIDTH *	MULT *	LBS/M *	TEMPER *	
						FINISH *			MATERIAL *		
						SPEC No. *			SPEC No. *		
						FIRST USED ON *		SCALE 2:1		<div>Switchcraft®</div>	
B	28735	04/21/25	PC	TJK	DATE DRAWN	BY	CHKD	APVD			
A	28644	02/14/24	PC	TJK	10/24/19	AM	03/07/24	03/07/24	SHEET 1 OF 1		
REV	ECO NUMBER	DATE	BY	APVD	NAME				PART No.	REV	
REVISIONS					DO NOT SCALE DRAWING	Ø 0.084 [2.1]mm x 0.475 LONG IMPROVED POWER PLUG W/LOCKRING, RoHS				767KZ-768KZ	B

SolidWorks CAD File

