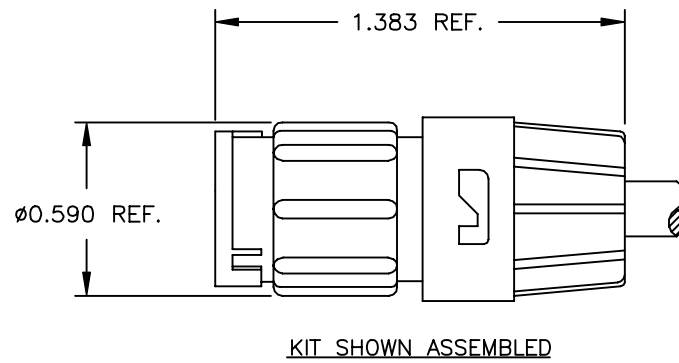


NOTES:

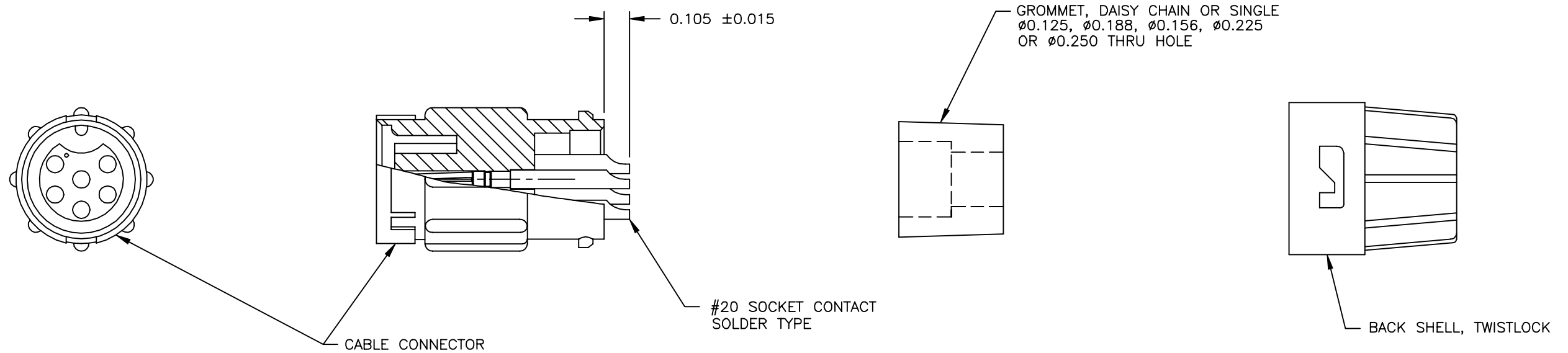
1. ASSEMBLY KIT TO BE BULK PACKED.
2. CONTACTS TO BE INSERTED INTO CABLE CONNECTOR.

NOTE: DAISY CHAIN GROMMET SET CONTAINS (3) SIZES $\phi 0.125$, $\phi 0.188$ & $\phi 0.250$



ASS'Y. PART NO.	CONTACT QTY.	GROMMET SIZE		
8282-2SG-3DC	2-#20	DAISY CHAIN		
8282-3SG-3DC	3-#20	DAISY CHAIN		
8282-4SG-3DC	4-#20	DAISY CHAIN		
8282-5SG-3DC	5-#20	DAISY CHAIN		
8282-6SG-3DC	6-#20	DAISY CHAIN		
8282-2SG-3XX	2-#20	SINGLE GROMMET		
8282-3SG-3XX	3-#20	SINGLE GROMMET		
8282-4SG-3XX	4-#20	SINGLE GROMMET		
8282-5SG-3XX	5-#20	SINGLE GROMMET		
8282-6SG-3XX	6-#20	SINGLE GROMMET		
8282-SG-3				

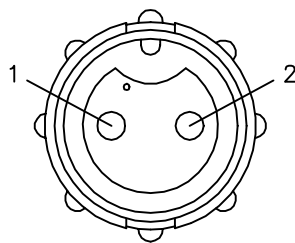
GROMMET SIZE
NUMBER OF CONTACTS



CUSTOMER APPROVAL

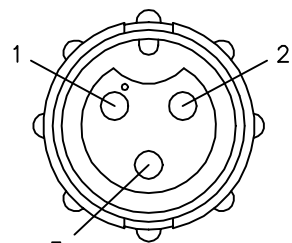
CHECKED BY: _____
 APPROVED BY: _____
 DATE: _____

8282-2SG-3DC
8282-2SG-3XX



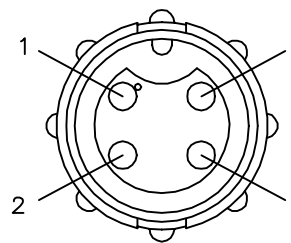
FACE VIEW

8282-3SG-3DC
8282-3SG-3XX



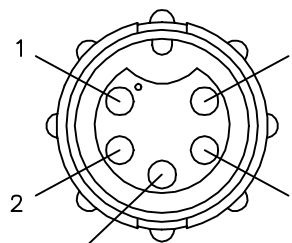
FACE VIEW

8282-4SG-3DC
8282-4SG-3XX



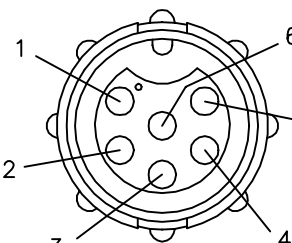
FACE VIEW

8282-5SG-3DC
8282-5SG-3XX



FACE VIEW

8282-6SG-3DC
8282-6SG-3XX



FACE VIEW

A	RCS	6-2-03	DRAWING CREATED PER DOR #03-9004SS	
REV.	INIT.	DATE	DESCRIPTION	
			ALL INFORMATION ILLUSTRATED IS THE PROPERTY OF CONZAL CORPORATION. UNAUTHORIZED DUPLICATION OR DISTRIBUTION OF THIS DOCUMENT IS PROHIBITED.	
ALL UNITS ARE IN FEET, INCHES, FRACTION OF INCHES AND DECIMALS.			ORG. DRAWN BY: _____ DATE: 5-29-03 CHECKED BY: _____	
UNLESS OTHERWISE SPECIFIED TOLERANCES: 3 PLACE DECIMALS ±.005 ANGLES ±1° FRACTIONS ±1/16			APPROVED BY: _____	
▽ = CRITICAL CHARACTERISTIC FLAG PER SPEC. XXXX			SCALE: NTS SIZE: B SHEET: 1 OF 1	conzall 601 E. WILDWOOD VILLA PARK, IL 60181 TITLE: CONNECTOR ASSEMBLY #20 SOCKET CONTACT MINI-CON-X CUSTOMER: STANDARD PRODUCT
FILE: 8282XSG3XX		DIRECTORY: CATALOG	PART NUMBER: 8282-XSG-3XX	REV. A