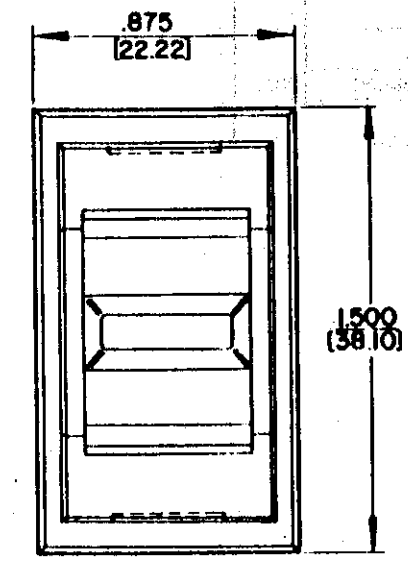
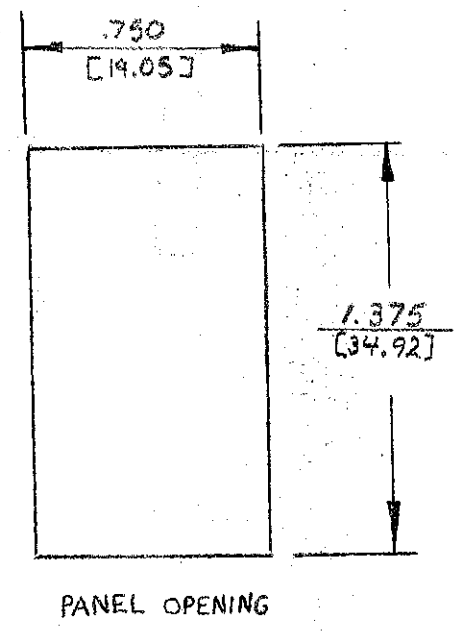
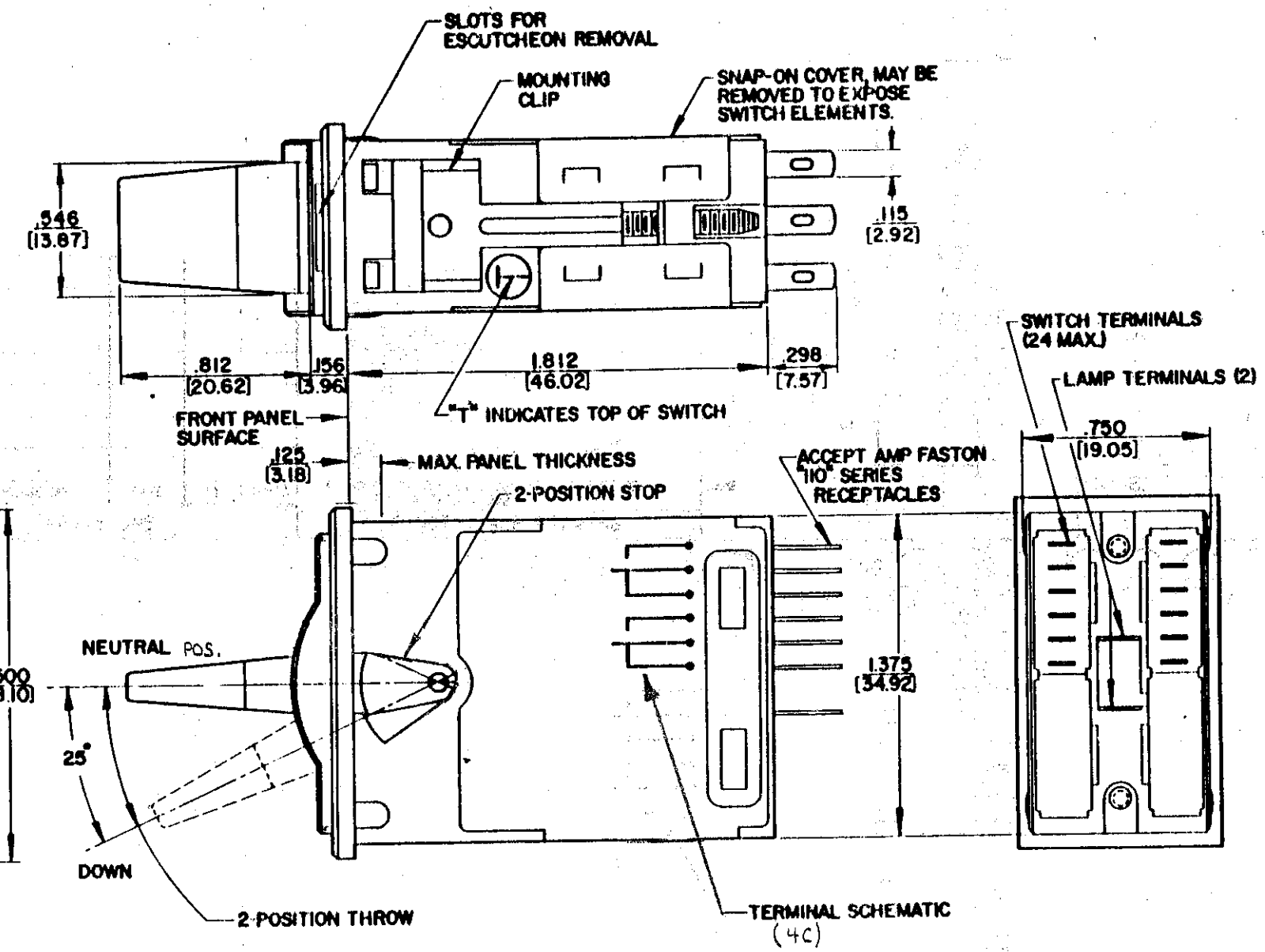


**MATERIAL:**  
 MOUNTING/RETAINING CLIPS AND COVERS:  
 STEEL, IRIDESCENT IRIDITE OVER CADMIUM PLATING  
 SPRINGS: PHOSPHOR BRONZE, SILVER PLATED  
 LAMP TERMINALS: BRASS, SILVER PLATED  
 LAMP SOCKETS: ZINC, NICKEL PLATED  
 TERMINALS: SILVER PLATED, STRAIGHT SOLDER LUGS.  
 HOUSING, ESCUTCHEON, KNOB, ACTUATOR AND  
 SWITCHING STACK INSULATION: MOLDED PLASTIC

**INITIAL OPERATING FORCES:**  
 NEUTRAL POS. TO POS. 2 : 260 ± 60 GRAMS  
 POS. 2 TO NEUTRAL POS.: 110 ± 50 GRAMS

**NOTES:**  
 1. ALL DIMENSIONS ARE REFERENCE  
 UNLESS OTHERWISE SPECIFIED.



CUSTOMER DRAWING  
 SHEET 1 OF 1

☆ STAR SYMBOL DENOTES CRITICAL DIMENSION, SEE S/C ENGINEERING STANDARD ES-0001					THIS DRAWING DESCRIBES A DESIGN CONSIDERED PROPRIETARY IN NATURE, DEVELOPED AND MANUFACTURED BY SWITCHCRAFT INC. AND IS RELEASED ON A CONFIDENTIAL BASIS FOR IDENTIFICATION PURPOSE ONLY.						
UNLESS OTHERWISE SPECIFIED					SIZE	WIDTH	MAT.	LBS./IN	TEMPER.		
1. ALL DIMENSIONS IN INCHES TWO PLACE DECIMAL ±.01 THREE PLACE DECIMAL ±.005 FRACTIONAL DIMENSIONS ±1/64 ANGLES ±1/2° ALL DIA'S CONCENTRIC WITHIN .005 T.I.R.					FINISH		MATERIAL				
2. REMOVE ALL BURRS 3. MAKE NO DIMENSIONAL ALLOWANCES FOR APPLIED FINISHES, I.E., PLATING, PAINTING, ETC.					SPEC. NO.		SPEC. NO.				
4. HOLES ON THE SAME CENTERLINE MUST BE ALIGNED WITHIN ±.002					FIRST USED ON		SCALE				
A EGO 21545 3-10-97 DA RB					DATE DRAWN	BY	CHK'D	APP'D	<b>Switchcraft®</b> A Raytheon Company		
ISSUE CHANGE NO. DATE BY APP'D					3-10-97	DA	RB 3-13-97	RB 3-13-97			
REVISIONS					NAME SERIES 84000 LOCKING LEVER-LITE III SWITCH					PART NO. 84212 L	ISSUE A
DO NOT SCALE DRAWING					ROUTING (146)						