

NOTES:

1. MATERIALS

- (B) SHELL: STEEL, NICKEL PLATED
INSULATOR: THERMOPLASTIC (UL94V-0)
CONTACT PIN: COPPER ALLOY, GOLD PLATED
FLANGE: THERMOPLASTIC (UL94V-0)
O-RING: SILICONE, LIGHT BLUE
EPOXY: EPOXY, BLACK
JACKSCREWS: BRASS, NICKEL PLATED

2. ELECTRICAL CHARACTERISTICS

- CURRENT RATING: 5A
CONTACT RESISTANCE: 25mΩ MAX
(B) INSULATION RESISTANCE: 100MΩ MIN @ 500V DC
DIELECTRIC WITHSTANDING VOLTAGE: 1000V AC FOR 1 MINUTE
(B) OPERATING TEMPERATURE: -40°C TO +105°C

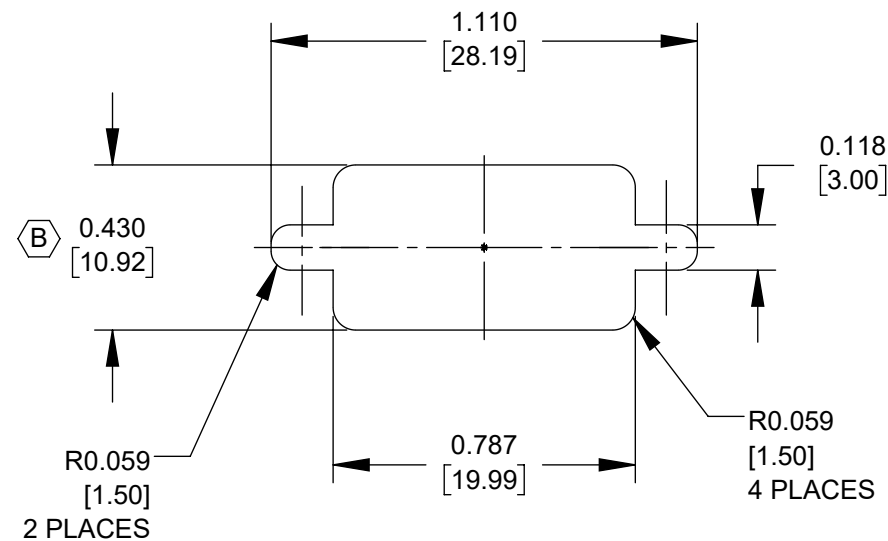
3. PANEL MOUNT CONNECTOR IS IP67 RATED.

4. DB9 FEMALE PANEL MOUNT CONNECTOR IS SOLDER CUP STYLE.

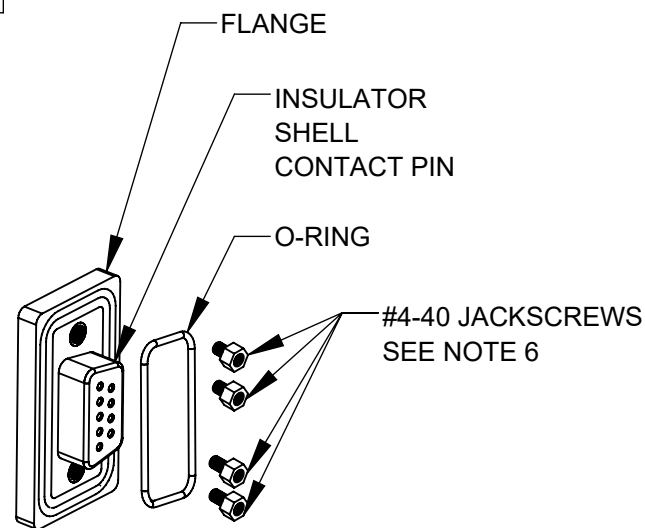
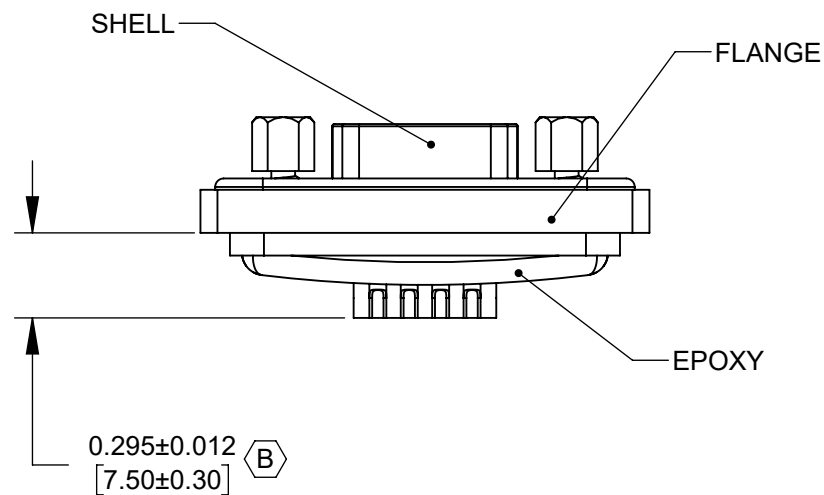
5. CONNECTOR ACCOMODATES WIRE RANGES FROM 22 ~ 26 AWG.

6. CONNECTOR SUPPLIED WITH FOUR #4-40 JACKSCREWS
TWO ARE 0.197 [5.00] LONG FOR PANEL THICKNESSES LESS THAN 0.048 [1.22].
TWO ARE 0.236 [5.99] LONG FOR PANEL THICKNESSES BETWEEN 0.048-0.078 [1.22-1.98].

7. THIS PRODUCT IS RoHS COMPLIANT.



RECOMMENDED PANEL CUT-OUT



ASSEMBLY EXPLODED VIEW
SCALE 1:1

CUSTOMER DRAWING

					<div>UNLESS OTHERWISE SPECIFIED</div> <div>1. ALL DIMENSIONS IN INCHES [mm]</div> <div>- TWO PLACE DECIMALS ±0.02 [0.5]</div> <div>- THREE PLACE DECIMALS ±0.005 [0.13]</div>	THIS DRAWING DESCRIBES A DESIGN CONSIDERED PROPRIETARY IN NATURE, DEVELOPED AND MANUFACTURED BY SWITCHCRAFT INC. AND IS RELEASED ON A CONFIDENTIAL BASIS FOR IDENTIFICATION PURPOSES ONLY.											
						SIZE	WIDTH		MULT		LBS/M		TEMPER				
						FINISH SPEC No.					MATERIAL SPEC No.						
						FIRST USED ON				SCALE 3:2		<div>Switchcraft®</div>					
B	28460	01/25/22	PC	TJK		DATE DRAWN	BY	CHKD	APVD								
A	RELEASE 26789	06/14/11	BL	TJK		8/11/10	JGK	07/11/11 BL	07/11/11 TJK								
REV	ECO NUMBER	DATE	BY	APVD		NAME					PART No.					REV	
REVISIONS					DO NOT SCALE DRAWING		DB9 F PANEL MOUNT, RoHS					DCPDB09FSC1					B