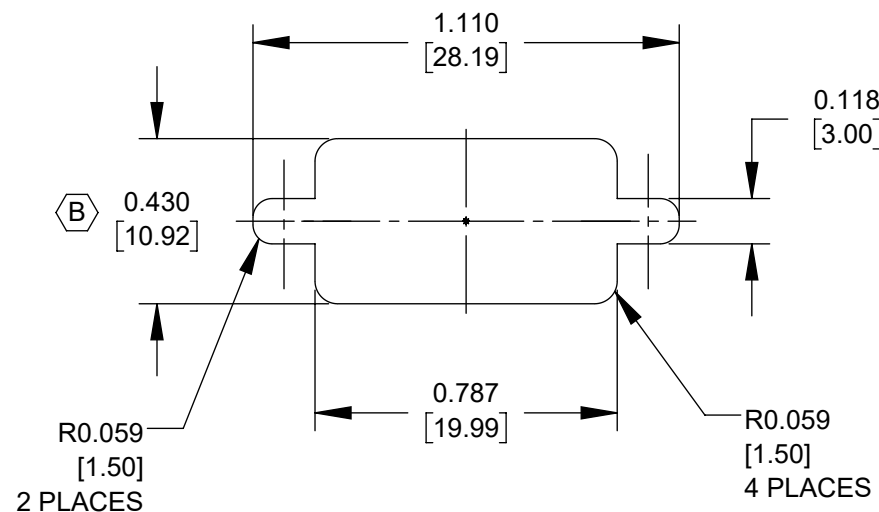
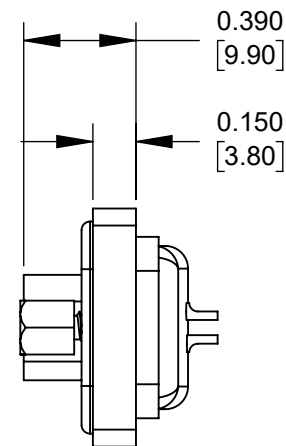
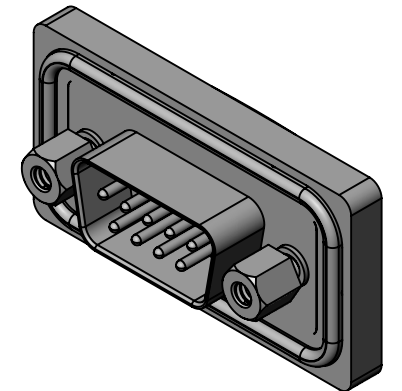


ASSEMBLY EXPLODED VIEW
SCALE 1:1



RECOMMENDED PANEL CUT-OUT



NOTES:

1. MATERIALS

- SHELL: STEEL, NICKEL PLATED
- INSULATOR: THERMOPLASTIC (UL94V-0)
- CONTACT PIN: COPPER ALLOY, GOLD PLATED
- FLANGE: THERMOPLASTIC (UL94V-0)
- O-RING: SILICONE, LIGHT BLUE
- EPOXY: EPOXY, BLACK
- JACKSCREWS: BRASS, NICKEL PLATED

2. ELECTRICAL CHARACTERISTICS

CURRENT RATING: 5A

CONTACT RESISTANCE: 25mΩ MAX

INSULATION RESISTANCE: 100MΩ MIN @ 500V DC

DIELECTRIC WITHSTANDING VOLTAGE: 1000V AC FOR 1 MINUTE

OPERATING TEMPERATURE: -40°C TO +105°C

3. PANEL MOUNT CONNECTOR IS IP67 RATED.

4. DB9 MALE PANEL MOUNT CONNECTOR IS SOLDER CUP STYLE.

5. CONNECTOR ACCOMODATES WIRE RANGES FROM 22 ~ 26 AWG.

6. CONNECTOR SUPPLIED WITH FOUR #4-40 JACKSCREWS
TWO ARE 0.197 [5.00] LONG FOR PANEL THICKNESSES LESS THAN 0.048 [1.22].
TWO ARE 0.236 [5.99] LONG FOR PANEL THICKNESSES BETWEEN 0.048-0.078 [1.22-1.98].

7. THIS PRODUCT IS RoHS COMPLIANT.

CUSTOMER DRAWING

					THIS DRAWING DESCRIBES A DESIGN CONSIDERED PROPRIETARY IN NATURE, DEVELOPED AND MANUFACTURED BY SWITCHCRAFT INC. AND IS RELEASED ON A CONFIDENTIAL BASIS FOR IDENTIFICATION PURPOSES ONLY.				
					SIZE	WIDTH	MULT	LBS/M	TEMPER
					FINISH SPEC No.			MATERIAL SPEC No.	
					FIRST USED ON		SCALE 3:2		Switchcraft®
					DATE DRAWN	BY	CHKD	APVD	
					08/11/10	JGK	07/11/11 BL	07/11/11 TJK	
					NAME			PART No.	REV
					DB9 M PANEL MOUNT, RoHS			DCPDB09MSC1	B
					DO NOT SCALE DRAWING				
					SolidWorks CAD File				