

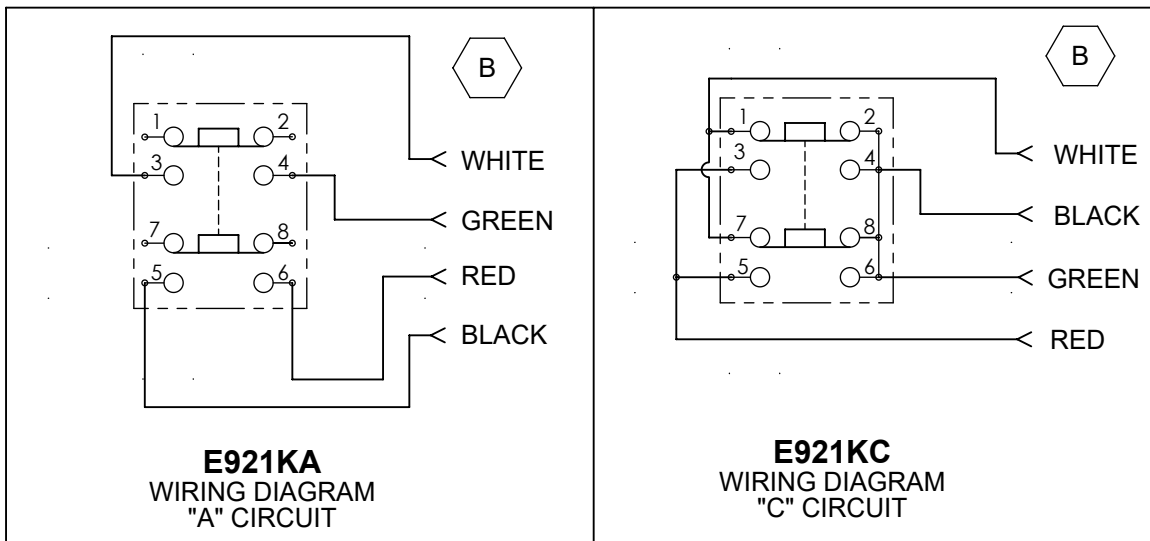
NOTES:

1. SPECIFICATIONS:

- SWITCH:
 DOUBLE POLE, MOMENTARY
 POSITIVE TACTILE FEEDBACK
 NOMINAL KEY TRAVEL 0.10 INCHES
 GOLD CONTACT FINISH
 MAXIMUM SWITCHING CURRENT 250mA
 MAXIMUM VOLTAGE 120V
 MAXIMUM POWER 9 WATTS AC, 5 WATTS DC
 MAXIMUM CARRYING CURRENT 500mA
 MAXIMUM CONTACT RESISTANCE 80mohm
 DIELECTRIC WITHSTANDING VOLTAGE 1,000V
 OPERATING LIFE 100,000 CYCLES
 OPERATING TEMPERATURE -25 TO +75°C
 ACTUATING FORCE LESS THAN 2 lb

2. MATERIALS:

- SWITCH HOUSING: GRAY THERMOPLASTIC
 ACTUATING BUTTON: NATURAL ELASTOMER
 CONTACTS: COPPER ALLOY, GOLD PLATED
 STRAIN RELIEF: NATURAL ELASTOMER
 CABLE: 4 CONDUCTOR, 26 AWG STRANDED, GRAY PVC JACKET



CUSTOMER DRAWING

REV	ECO NUMBER	DATE	BY	APVD
C	28453	12-20-21	PC	TJK
B	27569	9-3-15	TO	TJK
A	ECO #27491	5-28-15	PC	TJK

UNLESS OTHERWISE SPECIFIED

1. ALL DIMENSIONS IN INCHES [mm]
 - TWO PLACE DECIMALS ±0.02 [0.5]
 - THREE PLACE DECIMALS ±0.005 [0.13]

DO NOT SCALE DRAWING

THIS DRAWING DESCRIBES A DESIGN CONSIDERED PROPRIETARY IN NATURE, DEVELOPED AND MANUFACTURED BY SWITCHCRAFT INC. AND IS RELEASED ON A CONFIDENTIAL BASIS FOR IDENTIFICATION PURPOSES ONLY.									
SIZE	WIDTH	MULT	LBS/M	TEMPER	MATERIAL SEE NOTE 2				
FINISH SPEC No.					MATERIAL SPEC No.				
FIRST USED ON			SCALE 1:1						
DATE DRAWN	BY	CHKD	APVD						
2-19-15	SRC	SRC	TJK						
NAME			PART No.		REV				
PENDANT CABLE			E921KA-E921KC		C				