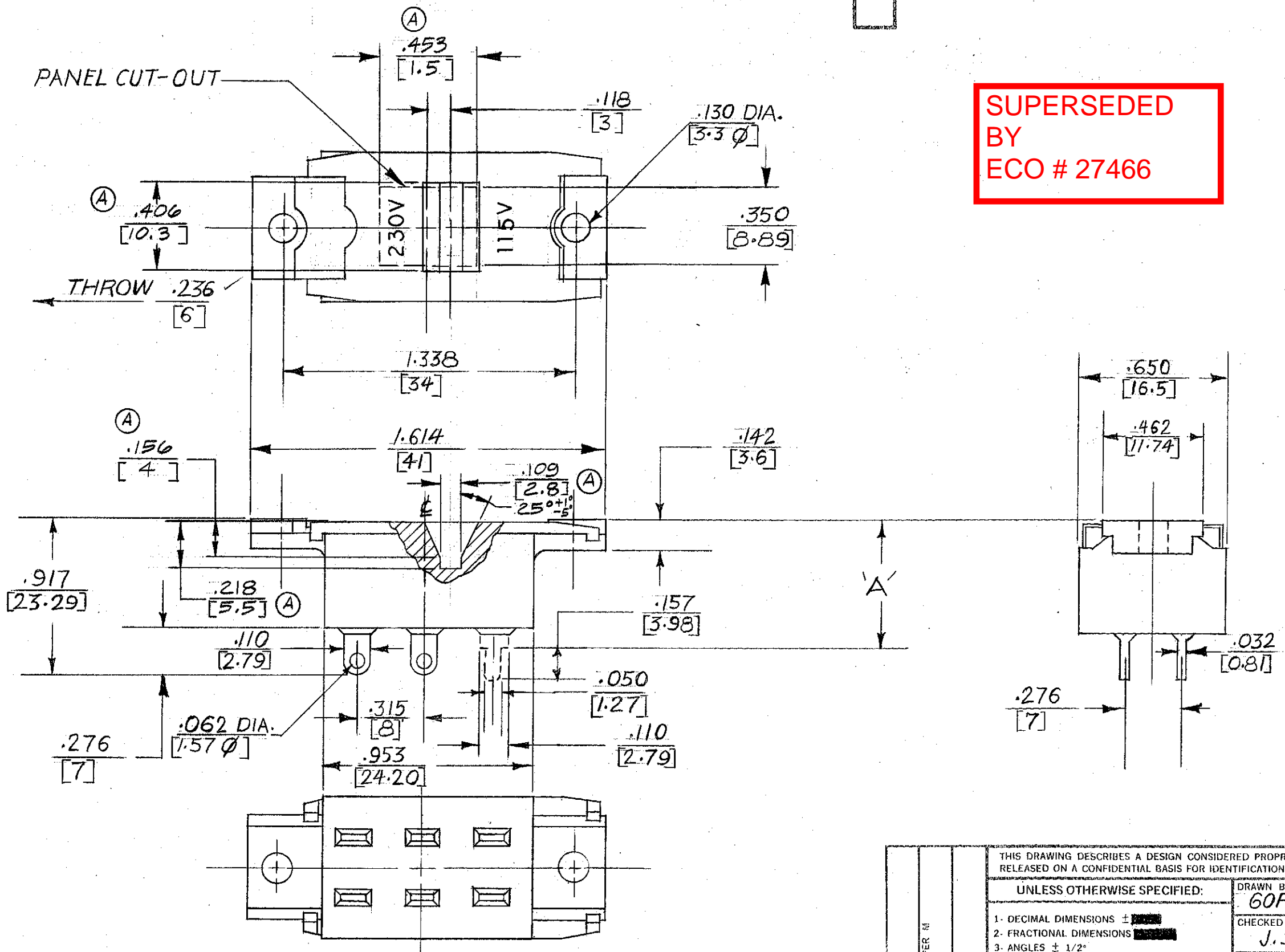


| ISS | ZONE | SYM | REVISION | BY | DATE |
|-----|------|-----|---|------|-------------|
| 3 | | | REDRAWN-ADDED REVISED PANEL CUTOUT | G.P. | 5-8-79 |
| 4 | | (A) | ECO 10772 REVISED PANEL CUT-OUT & SLOT | RB | 12-29 80 |

SUPERSEDED
BY
ECO # 27466



ELECTRICAL RATING: 2A. 250VAC
CARRY 6A. 250 VAC
MATERIALS: HOUSING AND TERMINAL
BOARD ASSEMBLY: PPS.
SLIDER BUTTON: NYLON.
TERMINALS: COPPER ALLOY-
SILVER PLATED
SLIDER CONTACT: BI-METAL-
SILVER ON COPPER
ALLOY
DIELECTRIC WITHSTANDING VOLTAGE:
2000 VAC 50/60 Hz, ONE
MINUTE BETWEEN ALL
TERMINALS.

| | |
|----------|--------------------------------|
| EPS1-PC3 | RIGHT ANGLE PC TERM. |
| EPS1-PC1 | .681 [17.30] 'A' DIM. PC TERM. |
| EPS1-PC2 | .719 [18.26] 'A' DIM PC TERM. |
| EPS1-SL1 | SOLDER LUG |
| PART NO. | TYPE OF TERMINAL |

STAR SYMBOL DENOTES CRITICAL DIMENSION.
SEE S/C ENGINEERING STANDARD ES-0001.

THIS DRAWING DESCRIBES A DESIGN CONSIDERED PROPRIETARY IN NATURE, DEVELOPED AND MANUFACTURED BY SWITCHCRAFT, INC. AND IS RELEASED ON A CONFIDENTIAL BASIS FOR IDENTIFICATION PURPOSE ONLY.

UNLESS OTHERWISE SPECIFIED:

| | | |
|---|----------------------------|----------------------|
| DRAWN BY GOPAL | DATE 5-8-79 | FINISH M |
| CHECKED BY J.S. | DATE 5-11-79 | PER FINISH SPEC. NO. |
| APPROVED BY | DATE | MATERIAL M |
| SCALE | | PER MAT. SPEC. NO. |
| FIRST USED ON M | | SWITCHCRAFT |
| NAME SLIDE SWITCH ASSEMBLY (DPDT) | PART NO. EPS1- | ISSUE 4 |
| DO NOT SCALE DRAWING | SHEET 1 OF 1 | |