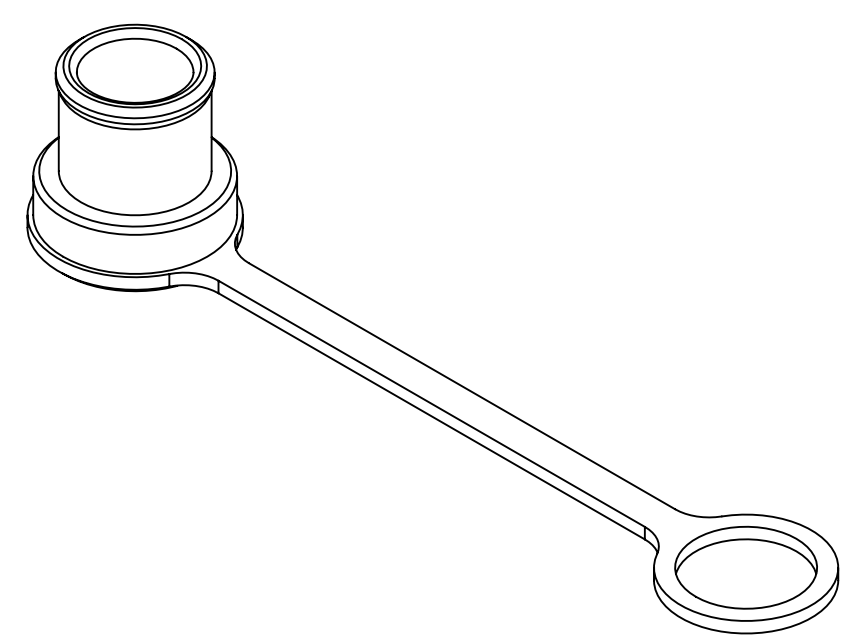


DIMENSIONS SHOWN FOR REFERENCE ONLY

NOTES:

1. HS2LCAP CONTAINS ONE SEAL CAP.
2. TYPICAL SEAL CAP INSTALLATION SHOWN IN FIG A AND FIG B.
3. MATERIAL: THERMOPLASTIC ELASTOMER, BLACK COLOR STANDARD.
4. THIS PRODUCT IS RoHS COMPLIANT.



CUSTOMER DRAWING

| | | | | | | | | | | | | | | | | | | | | | |
|-----------|-------------|----------|-----|------|--|--|--|-----------|-------------------------|---|-------------------------|----------------------------------|--|--------------|--|--|--|-----------|--|--|--|
| | | | | | | THIS DRAWING DESCRIBES A DESIGN CONSIDERED PROPRIETARY IN NATURE, DEVELOPED AND MANUFACTURED BY SWITCHCRAFT INC. AND IS RELEASED ON A CONFIDENTIAL BASIS FOR IDENTIFICATION PURPOSES ONLY. | | | | | | | | | | | | | | | |
| | | | | | UNLESS OTHERWISE SPECIFIED 1. ALL DIMENSIONS IN INCHES [mm] - TWO PLACE DECIMALS ±0.02 [0.5] - THREE PLACE DECIMALS ±0.005 [0.13] | SIZE | | WIDTH | | MULT | | LBS/M | | TEMPER | | | | | | | |
| | | | | | | FINISH SPEC No. | | | | | | MATERIAL (SEE NOTES) SPEC No. | | | | | | | | | |
| | | | | | | FIRST USED ON DURA-PULL | | | | SCALE 2:1 | | | | Switchcraft® | | | | | | | |
| | | | | | | DATE DRAWN 02/04/16 | | BY PNK | CHKD PNK 02/04/16 | | APVD SRC 02/04/16 | | | | | | | | | | |
| 0A | PRELIMINARY | 02/04/16 | PNK | SRC | | SHEET 1 OF 1 | | | | | | | | | | | | | | | |
| REV | ECO NUMBER | DATE | BY | APVD | | PART No. HS2LCAP | | | | | | | | | | | | REV 0A | | | |
| REVISIONS | | | | | DO NOT SCALE DRAWING | | | | | SEAL CAP, CABLE-TO-CABLE HS2L SERIES CONNECTOR, RoHS | | | | | | | | | | | |