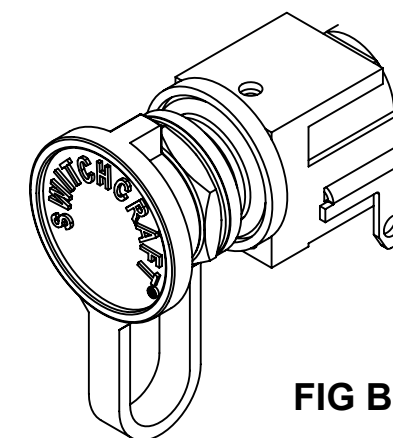
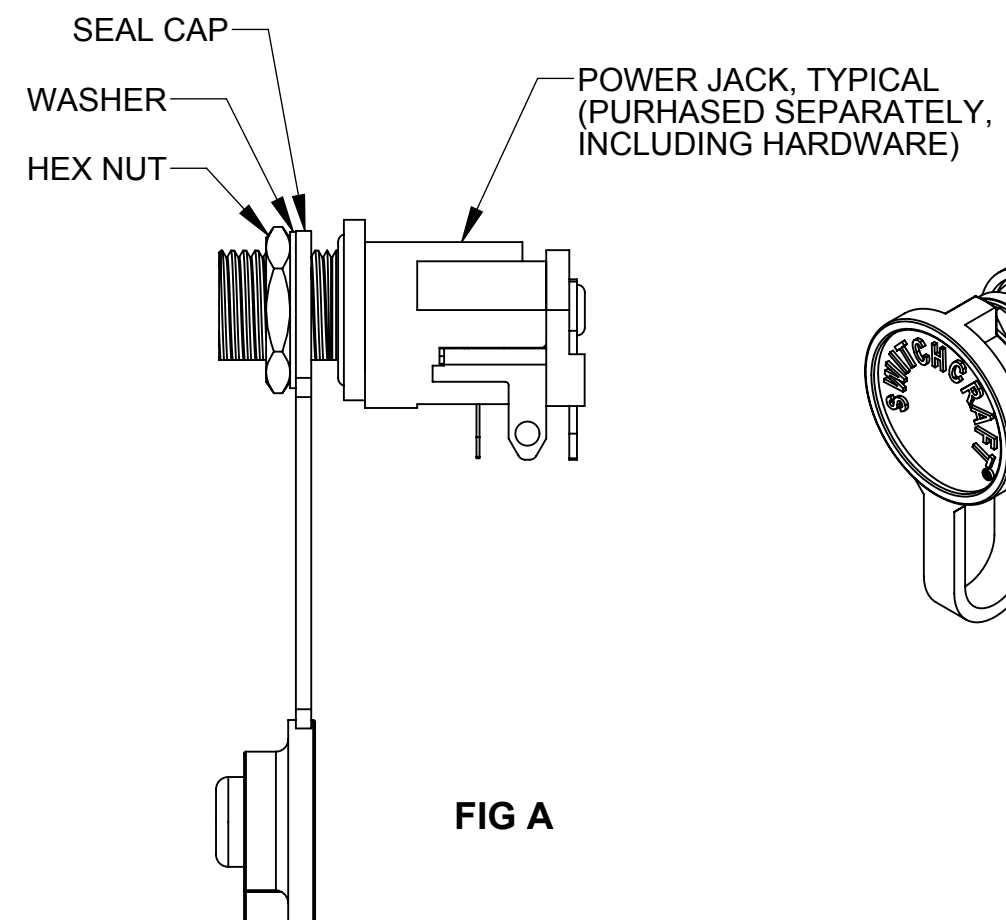


DIMENSIONS SHOWN ONLY FOR REFERENCE



#### NOTES:

1. PJCAP CONTAINS ONE SEAL CAP.
2. TYPICAL SEAL CAP INSTALLATION SHOWN IN FIG A AND FIG B.  
HEX NUT RECOMMENDED TORQUE: 8-10 lb-in [0.90 - 1.1 N-m].
3. TYPICAL MATING PRODUCT:  
RAPC10PS, RAPC10S, RASH10PS, RASH10S, RASM10PS,  
RASM10S, RASPC10PS, RASPC10S, RASSM10PS & RASSM10S.
4. MATERIAL:  
THERMOPLASTIC ELASTOMER, BLACK COLOR STANDARD.
5. THIS PRODUCT IS RoHS COMPLIANT.

**CUSTOMER DRAWING**

					<div>UNLESS OTHERWISE SPECIFIED</div> <div>1. ALL DIMENSIONS IN INCHES</div> <div>- TWO PLACE DECIMALS    ±0.02</div> <div>- THREE PLACE DECIMALS    ±0.005</div>	THIS DRAWING DESCRIBES A DESIGN CONSIDERED PROPRIETARY IN NATURE, DEVELOPED AND MANUFACTURED BY SWITCHCRAFT INC. AND IS RELEASED ON A CONFIDENTIAL BASIS FOR IDENTIFICATION PURPOSES ONLY.													
						SIZE	WIDTH		MULT		LBS/M		TEMPER						
						FINISH SPEC No.						MATERIAL SPEC No.							
						FIRST USED ON EN2P SERIES				SCALE 2:1		Switchcraft®							
						DATE DRAWN	BY	CHKD	APVD										
A	27361	9-12-14	TO	TJK		11/14/13	PNK	PNK	SRC										
					11/14/13				11/14/13		SHEET 1 OF 1								
REV	ECO NUMBER	DATE	BY	APVD	NAME CAP, HIGH AMP SEALED POWER JACKS, RoHS						PART No. PJCAP				REV A				
REVISIONS					DO NOT SCALE DRAWING														

SolidWorks CAD File **B**