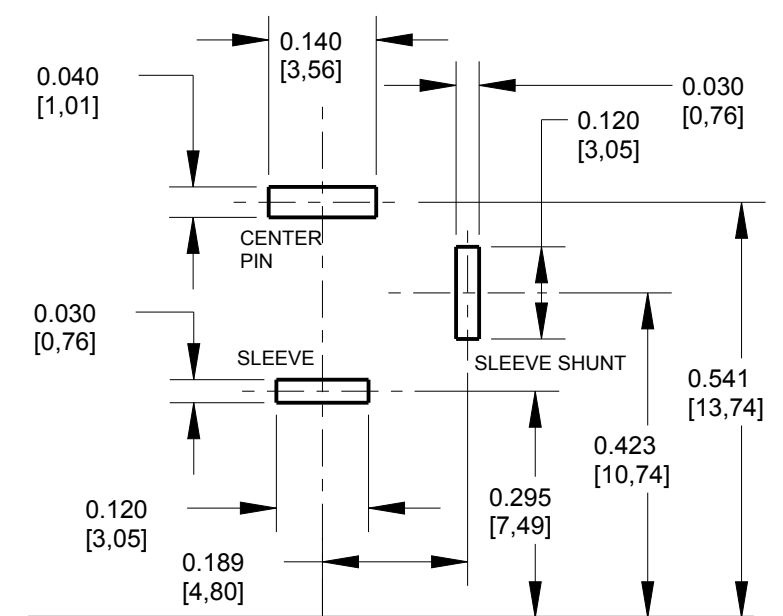
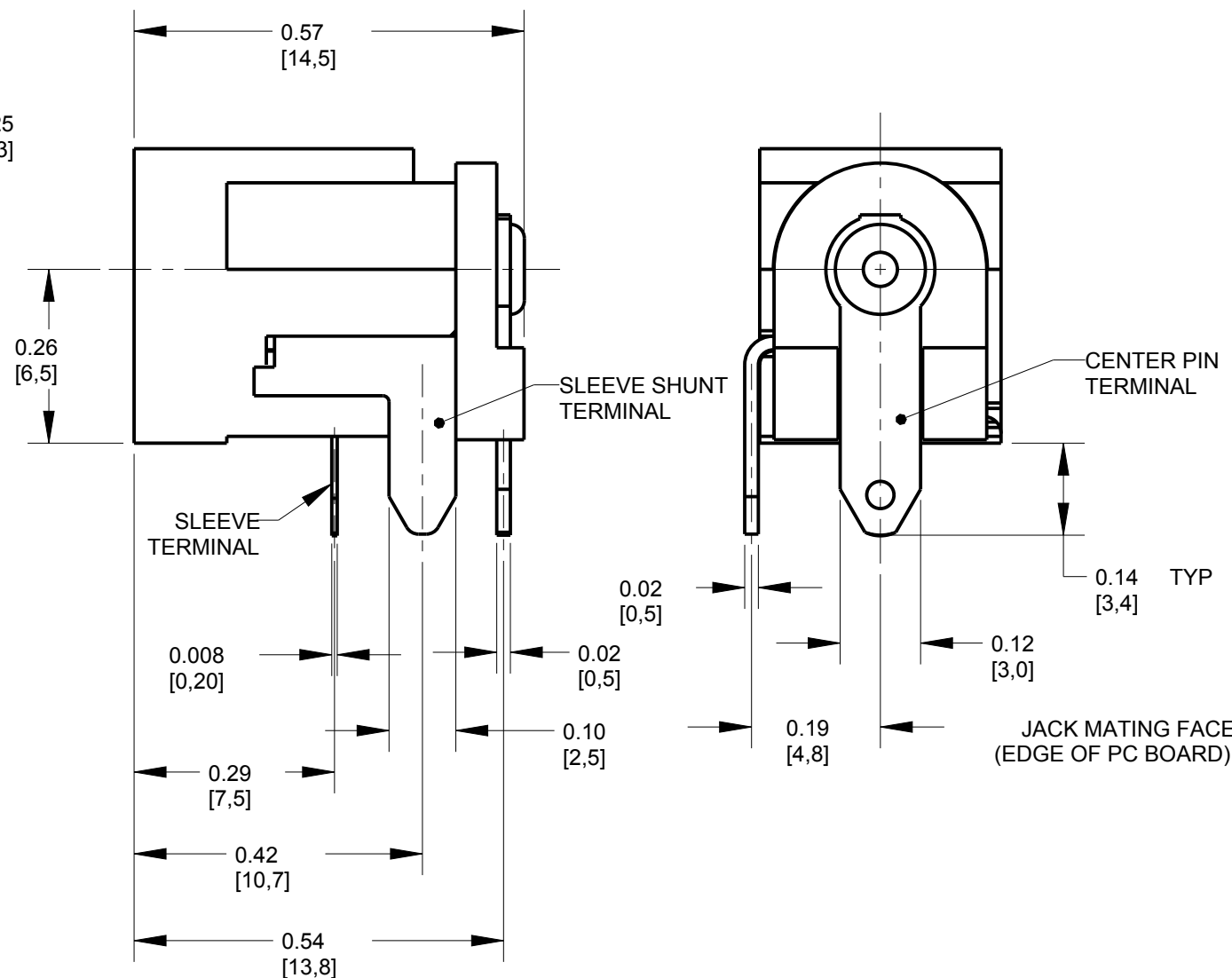
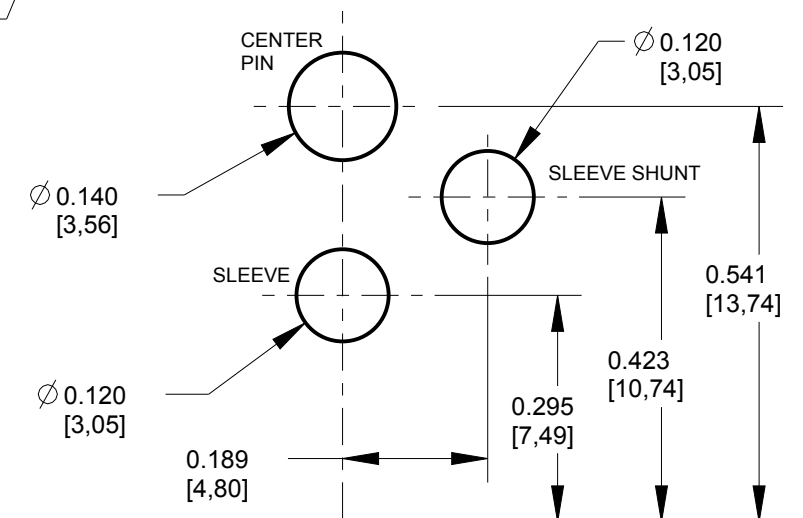


NOTES:

1. ALL DIMENSIONS ARE FOR REFERENCE ONLY.
2. SAME AS RAPC712X, EXCEPT TIN PLATING OF TERMINALS.
3. MATERIALS:
  - HOUSING AND COVER: HIGH GRADE THERMOPLASTIC, UL94V-0 RATED, COLOR BLACK
  - CENTER PIN: BRASS, NICKEL PLATED PER QQ-N-290, CLASS 1
  - PIN AND SHUNT TERMINALS: BRASS, TIN PLATED
  - SLEEVE SPRING: SPRING COPPER ALLOY, TIN PLATED
4. SPECIFICATIONS:
  - LIFE: 5000 CYCLES
  - INSERTION FORCE: 5 LB [2.3 KG] MAX
  - WITHDRAWAL FORCE: 0.5 LB [0.2 KG] MIN
  - CONTACT RESISTANCE: 30 MILLIOHM MAX, 60 MILLIOHM MAX. AFTER TEST
  - INSULATION RESISTANCE: 30 MEGAOHM MIN. @ 100VDC
  - DIELECTRIC WITHSTANDING VOLTAGE: 250VAC FOR 1 MINUTE
  - CURRENT (CARRYING): 5A
5. THIS PRODUCT IS RoHS COMPLIANT.




### RECOMMENDED PC BOARD LAYOUT (COMPONENT SIDE)



### ALTERNATE PC BOARD LAYOUT (COMPONENT SIDE)

CUSTOMER DRAWING

					<div> STAR SYMBOL DENOTES CRITICAL DIMENSION</div> <div>UNLESS OTHERWISE SPECIFIED</div> <div>1. ALL DIMENSIONS IN INCHES -TWO PLACE DECIMALS    ±0.01 -THREE PLACE DECIMALS   ±0.005 -ANGLES                    ±1° -ALL DIA. CONCENTRIC WITHIN 0.005 T.I.R.</div> <div>2. FEATURES ON THE SAME CENTERLINE MUST BE ALIGNED WITHIN ±0.002</div> <div>3. REMOVE ALL BURRS</div> <div>DO NOT SCALE DRAWING</div>	THIS DRAWING DESCRIBES A DESIGN CONSIDERED PROPRIETARY IN NATURE, DEVELOPED AND MANUFACTURED BY SWITCHCRAFT INC. AND IS RELEASED ON A CONFIDENTIAL BASIS FOR IDENTIFICATION PURPOSES ONLY.												
						SIZE		WIDTH		MULT		LBS/M		TEMPER				
						FINISH						MATERIAL						
						SPEC No.						SPEC No.						
						FIRST USED ON				SCALE 4:1		<div>Switchcraft®</div>						
					DATE DRAWN		BY	CHKD		APVD								
					22-Feb-05		JL	MW 2-22-05		MW 2-22-05		SHEET    1    OF    1						
A	25282	2-6-06	TJK	TJK	NAME						PART No.				REV			
					POWER JACK, PC TERMINALS 0.10 [2.5mm] PIN, RoHS						RASPC712X				A			
REV	ECO NUMBER	DATE	BY	APVD														
REVISIONS																		