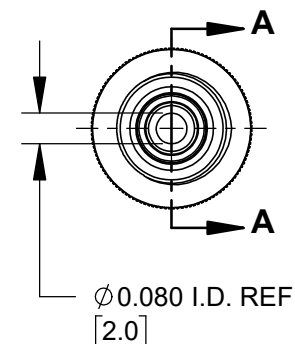
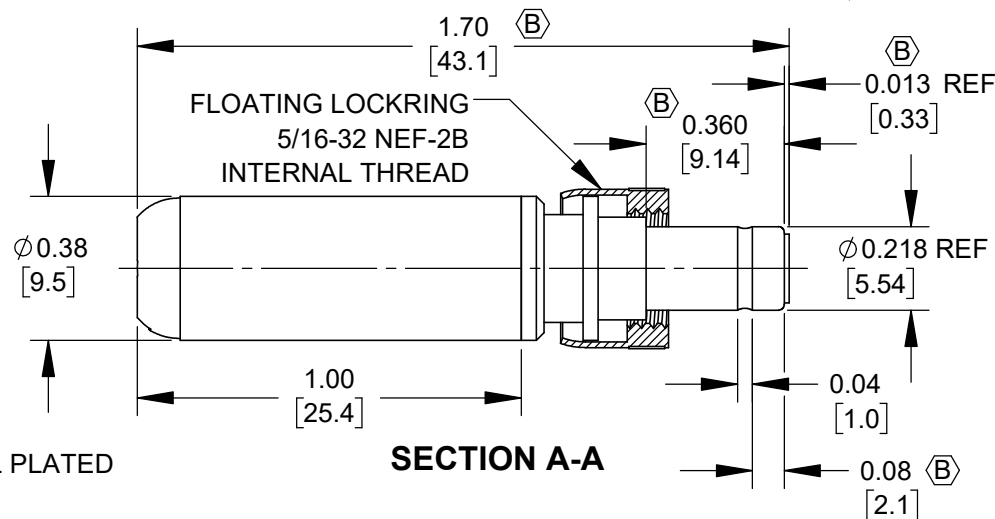


PART NUMBER	HANDLE COLOR
S760KHZ	BLACK
S765KHZ	RED



#### NOTES:

##### 1. MATERIALS:

CONDUCTORS & LOCKRING - BRASS, NICKEL PLATED  
TERMINALS - BRASS, TIN PLATED  
INSULATORS & HANDLE - THERMOPLASTIC

##### 2. THIS PRODUCT IS RoHS COMPLIANT.

**CUSTOMER DRAWING**

					<div>UNLESS OTHERWISE SPECIFIED</div> <div>1. ALL DIMENSIONS IN INCHES [mm]</div> <div>- TWO PLACE DECIMALS    ±0.02   [0.5]</div> <div>- THREE PLACE DECIMALS   ±0.005   [0.13]</div>	THIS DRAWING DESCRIBES A DESIGN CONSIDERED PROPRIETARY IN NATURE, DEVELOPED AND MANUFACTURED BY SWITCHCRAFT INC. AND IS RELEASED ON A CONFIDENTIAL BASIS FOR IDENTIFICATION PURPOSES ONLY.					
						SIZE	WIDTH	MULT	LBS/M	TEMPER	
						*	*	*	*	*	
						FINISH			MATERIAL		
						SPEC No.			SPEC No.		
						FIRST USED ON			SCALE		
B	28735	04/21/25	PC	TJK		DATE DRAWN	BY	CHKD	APVD	Switchcraft®	
A	28644	02/14/24	PC	TJK		11/06/19	AM	03/08/24	03/08/24		
						SHEET    1                      OF    1					
REV	ECO NUMBER	DATE	BY	APVD		NAME				PART No.	REV
REVISIONS					DO NOT SCALE DRAWING	Ø 0.080 [2.0]mm x 0.375 LONG IMPROVED HT POWER PLUG W/LOCKRING, RoHS				S760KHZ-S765KHZ	B

SolidWorks CAD File

