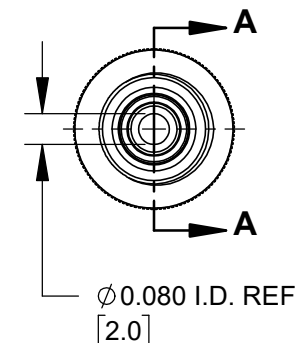
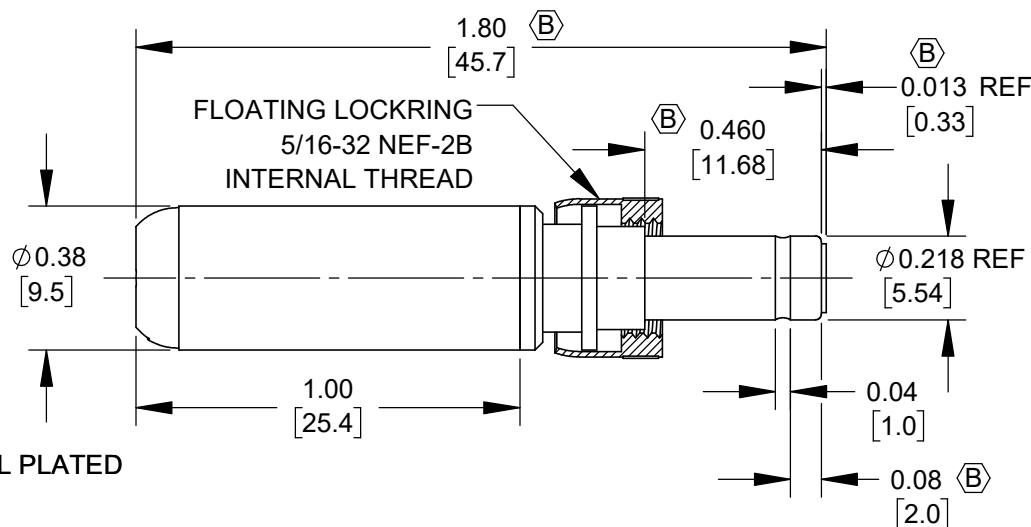
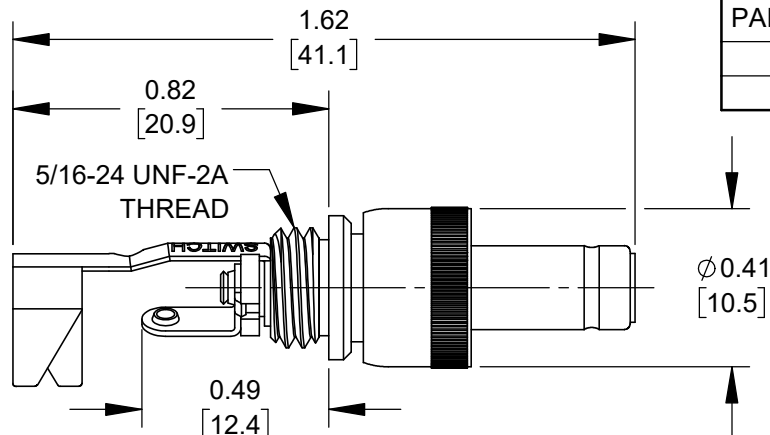


NOTES:

1. MATERIALS:

CONDUCTORS & LOCKRING - BRASS, NICKEL PLATED
TERMINALS - BRASS, TIN PLATED
INSULATORS & HANDLE - THERMOPLASTIC

2. THIS PRODUCT IS RoHS COMPLIANT.



CUSTOMER DRAWING

					<div>UNLESS OTHERWISE SPECIFIED</div> <div>1. ALL DIMENSIONS IN INCHES [mm]</div> <div>- TWO PLACE DECIMALS ±0.02 [0.5]</div> <div>- THREE PLACE DECIMALS ±0.005 [0.13]</div>	THIS DRAWING DESCRIBES A DESIGN CONSIDERED PROPRIETARY IN NATURE, DEVELOPED AND MANUFACTURED BY SWITCHCRAFT INC. AND IS RELEASED ON A CONFIDENTIAL BASIS FOR IDENTIFICATION PURPOSES ONLY.					
						SIZE *	WIDTH *	MULT *	LBS/M *	TEMPER *	
						FINISH *			MATERIAL *		
						SPEC No. *			SPEC No. *		
						FIRST USED ON *		SCALE 2:1		<div>Switchcraft®</div>	
B	28735	04/21/25	PC	TJK		DATE DRAWN 10/24/19	BY AM	CHKD AM 03/13/24	APVD AM 03/13/24		
A	28644	02/14/24	PC	TJK						SHEET 1 OF 1	
REV	ECO NUMBER	DATE	BY	APVD	NAME Ø 0.080 [2.0]mm x 0.475 LONG IMPROVED POWER PLUG W/LOCKRING, RoHS					PART No. S761KZ-S766KZ	REV B
REVISIONS					DO NOT SCALE DRAWING						

SolidWorks CAD File

