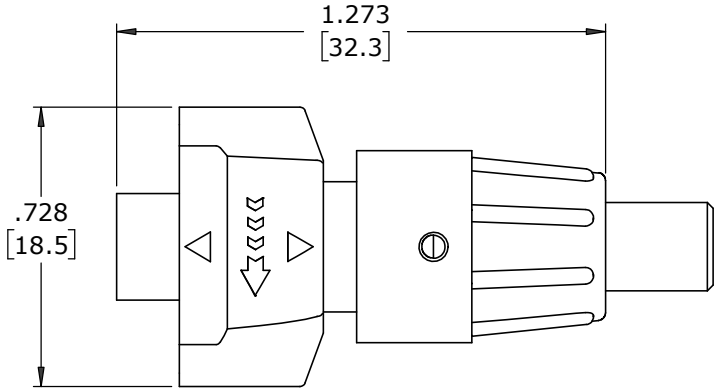
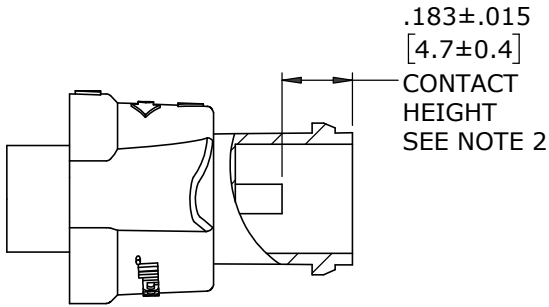


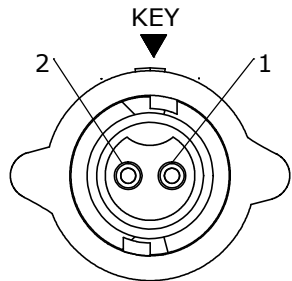
- NOTES:
- 1. ALL PARTS TO BE BULK PACKED
 - 2. CONTACTS SUPPLIED UNASSEMBLED
 - 3. ALL DIMENSIONS ARE REFERENCE EXCEPT THOSE WITH A TOLERANCE

ASS'Y P/N	FOR CABLE O.D.
W16280-XPG-P-311	.09-.14 [2.3-3.6]
W16280-XPG-P-315	.15-.17 [3.8-4.3]
W16280-XPG-P-318	.18-.20 [4.6-5.1]

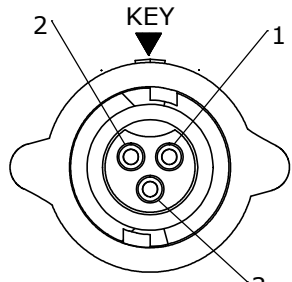
ASS'Y P/N	CONTACT QTY.
W16280-2PG-P-3XX	2
W16280-3PG-P-3XX	3
W16280-XPG-P-3XX	



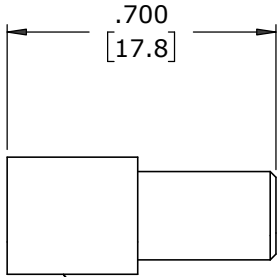
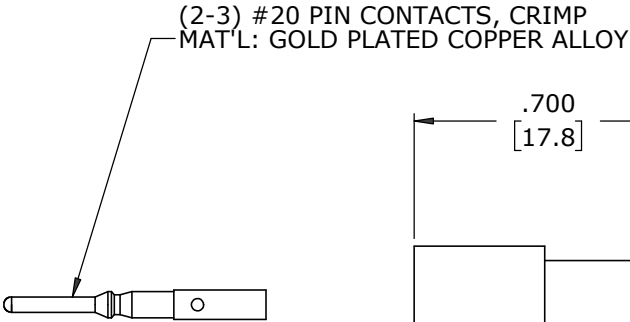
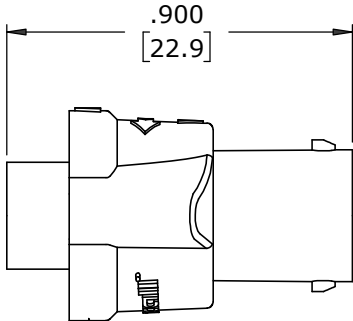
SHOWN ASSEMBLED
FOR CUSTOMER REFERENCE ONLY



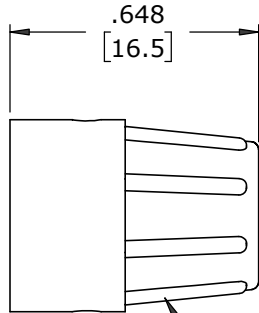
FACE VIEW
W16280-2PG-P-3XX



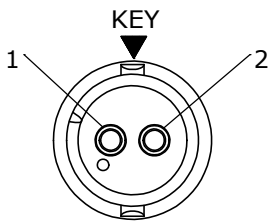
FACE VIEW
W16280-3PG-P-3XX



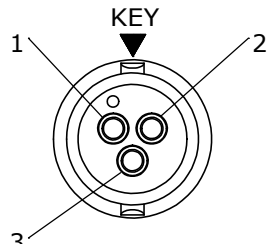
GROMMET
MAT'L: RUBBER, BLACK



BACKSHELL
MAT'L: UV PBT, BLACK



WIRING VIEW
W16280-2PG-P-3XX



WIRING VIEW
W16280-3PG-P-3XX

DIMENSIONS IN BRACKETS [] ARE METRIC

CUSTOMER APPROVAL	
THIS DOCUMENT CONTAINS CONFIDENTIAL INFORMATION PROPRIETARY TO CONXALL CORPORATION. ANY REPRODUCTION, DISCLOSURE, OR USE OF THIS DOCUMENT /INFORMATION IS EXPRESSLY PROHIBITED UNLESS AUTHORIZED IN WRITING BY CONXALL CORPORATION.	
APPROVED BY:	_____
DATE:	_____

RoHS COMPLIANT

A	MA	08-14-20	RELEASED PER PDR 18004-4	
	JGK	03/31/20	ADDED SHEET 2 FOR CABLE-END ASSEMBLY INSTRUCTIONS.	
	JGK	9/05/19	DRAWING CREATED FOR PDR #18004.	
REV.	INIT.	DATE	DESCRIPTION	
	JGK	9/05/19	ORIG. DRAWN BY: DATE: JGK 9/05/19	 601 E. WILDWOOD VILLA PARK, IL 60181
			CHECKED BY:	
			APPROVED BY:	
			SCALE: NTS SIZE: B SHEET: 1 OF 1	TITLE: CABLE-END ASSEMBLY 2-3 #20 PIN CONTACTS, CRIMP INSTA-CLICK™ MICRO-CON-X STANDARD PRODUCT
			FILE: W16280-XPG-P-3XX DIRECTORY: SLW	
			PART NUMBER: W16280-XPG-P-3XX	REV A