

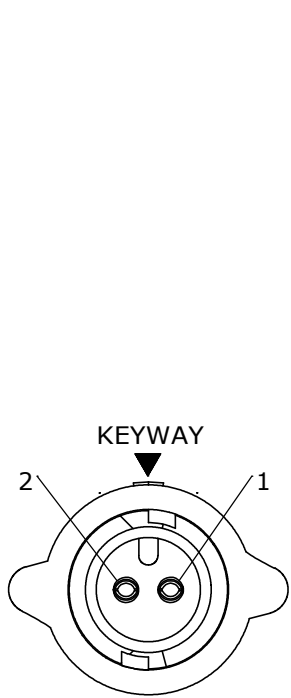
NOTES:

- 1. ALL PARTS TO BE BULK PACKED.
- 2. CONTACTS SUPPLIED UNASSEMBLED
- 3. ALL DIMENSIONS ARE REFERENCE EXCEPT THOSE WITH A TOLERANCE

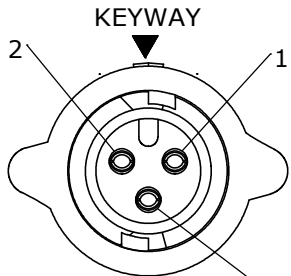
ASS'Y P/N	FOR CABLE O.D.
W16280-XSG-P-518	.175-.185 [4.4-4.7]
W16280-XSG-P-521	.205-.215 [5.2-5.5]
W16280-XSG-P-522	.215-.225 [5.5-5.7]

ASS'Y P/N	CONTACT QTY.
W16280-2SG-P-5XX	2
W16280-3SG-P-5XX	3
W16280-XSG-P-5XX	

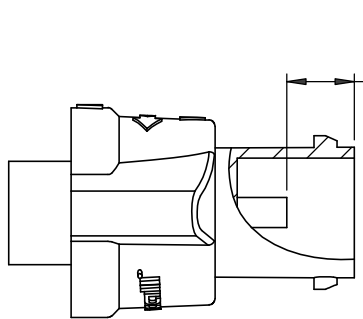
GROMMET  
SIZE  
NUMBER OF CONTACTS



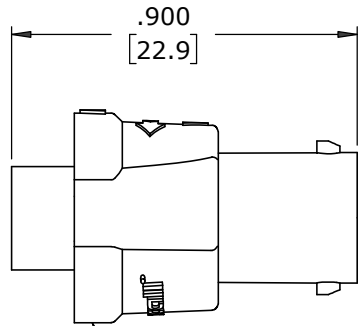
FACE VIEW  
W16280-2SG-P-5XX



FACE VIEW  
W16280-3SG-P-5XX

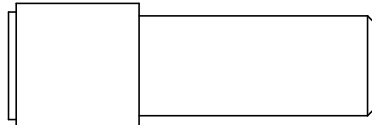


.176±.015  
[4.5±0.4]  
CONTACT  
HEIGHT  
SEE NOTE 2

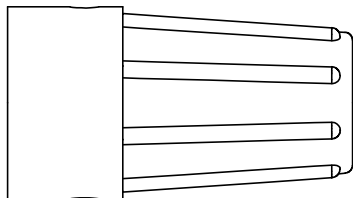


CABLE END HOUSING  
MAT'L: UV PBT BLACK  
COUPLING RING  
MAT'L: UV PBT, BLACK  
O-RING  
MAT'L: SILICONE, RED  
SPRING  
MAT'L: STAINLESS STEEL

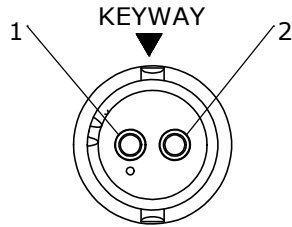
(2-3) #20 PIN CONTACTS, CRIMP  
MAT'L: GOLD PLATED COPPER ALLOY



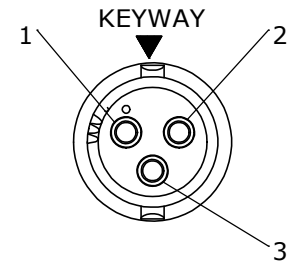
GROMMET  
MAT'L: RUBBER, BLACK



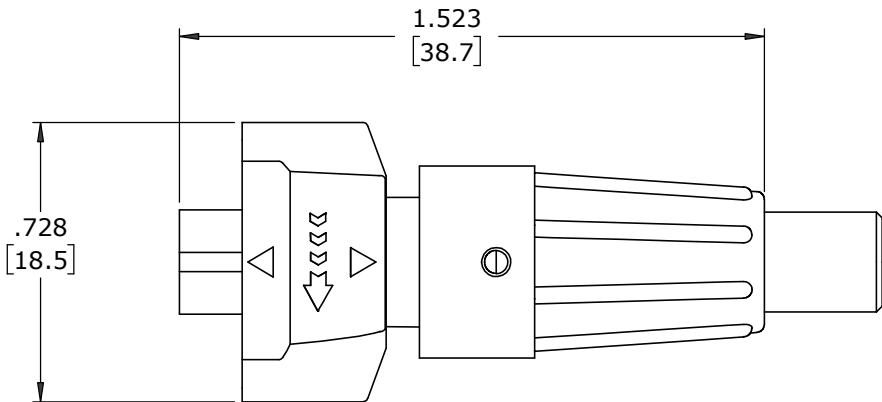
BACKSHELL  
MAT'L: UV PBT, BLACK



WIRING VIEW  
W16280-2SG-P-5XX



WIRING VIEW  
W16280-3SG-P-5XX



SHOWN ASSEMBLED  
FOR CUSTOMER REFERENCE ONLY


DIMENSIONS IN BRACKETS [ ] ARE METRIC

CUSTOMER APPROVAL

THIS DOCUMENT CONTAINS CONFIDENTIAL INFORMATION PROPRIETARY TO CONXALL CORPORATION. ANY REPRODUCTION, DISCLOSURE, OR USE OF THIS DOCUMENT /INFORMATION IS EXPRESSLY PROHIBITED UNLESS AUTHORIZED IN WRITING BY CONXALL CORPORATION.

APPROVED BY: \_\_\_\_\_  
DATE: \_\_\_\_\_

RoHS COMPLIANT

A	MA	08-17-20	RELEASED PER PDR 18004-4				
	JGK	03/05/20	ADDED SHEET 2 FOR CABLE-END ASSEMBLY INSTRUCTIONS.				
	JGK	09/06/19	DRAWING CREATED FOR PDR #18004.				
REV.	INIT.	DATE	DESCRIPTION				
<div>ALL INFORMATION ILLUSTRATED IS THE PROPERTY OF "CONXCALL CORPORATION". UNAUTHORIZED DUPLICATION OR DISTRIBUTION OF THIS DOCUMENT IS PROHIBITED.</div> <div>ALL UNITS ARE IN FEET, INCHES, FRACTION OF INCHES AND DECIMALS.</div> <div>UNLESS OTHERWISE SPECIFIED TOLERANCES: 3 PLACE DECIMALS ±.005 ANGLES ±1° FRACTIONS ±1/16</div> <div>▷ = CRITICAL CHARACTERISTIC FLAG PER SPEC. XXXX</div>			ORIG. DRAWN BY: JGK		DATE: 9/06/19		<div></div> <div>601 E. WILDWOOD VILLA PARK, IL 60181</div>
			CHECKED BY:				
<div>APPROVED BY:</div>			TITLE:		CABLE-END ASSEMBLY (2-3) #20 SOCKET CONTACTS, CRIMP INSTA-CLICK™ MICRO-CON-X STANDARD PRODUCT		
			CUSTOMER:				
SCALE NTS		SIZE B	SHEET 1 OF 1		PART NUMBER: W16280-XSG-P-5XX		
FILE: W16280-XSG-P-5XX		DIRECTORY: SLW		REV A			