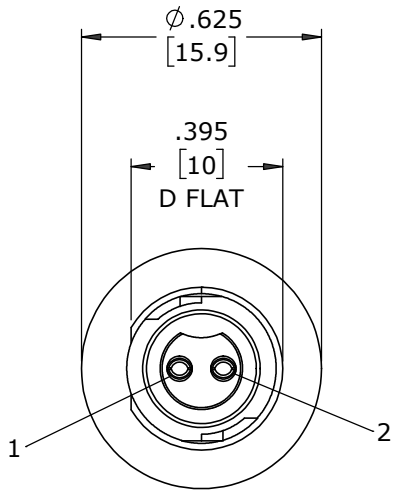
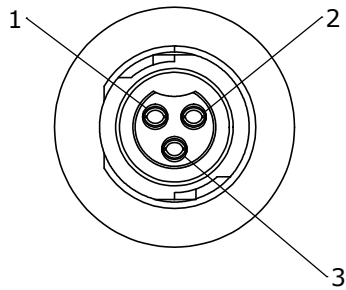


- NOTES:
- 1. PARTS TO BE BULK PACKED
 - 2. CONTACTS SHIPPED UNASSEMBLED
 - 3. ALL DIMENSIONS ARE REFERENCE EXCEPT THOSE WITH A TOLERANCE

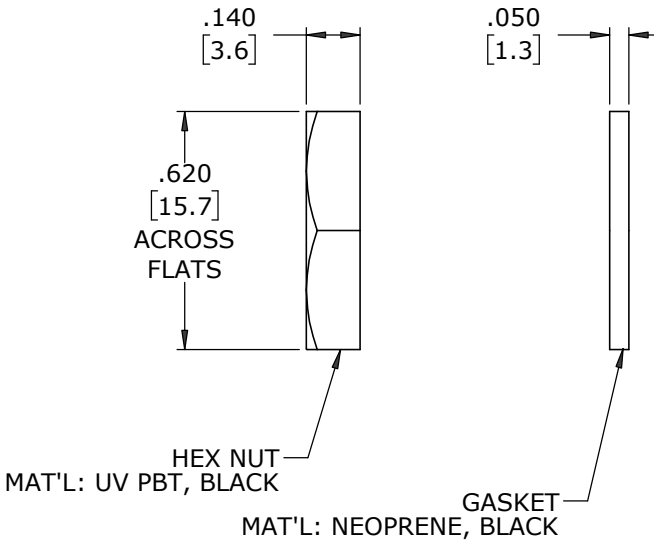
ASS'Y P/N	CONTACT QTY
W17280-2SG-P-300	2 #20
W17280-3SG-P-300	3 #20



FACE VIEW
W17280-2SG-P-300

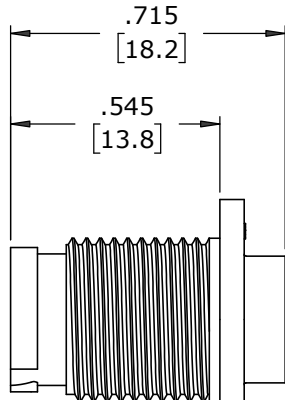
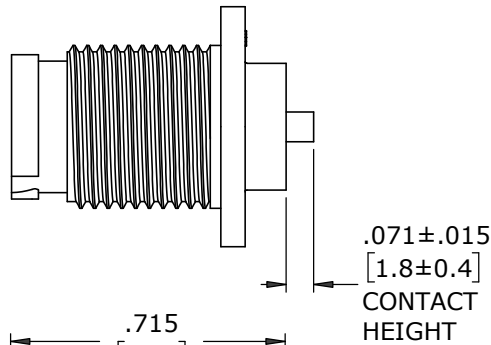


FACE VIEW
W17280-3SG-P-300

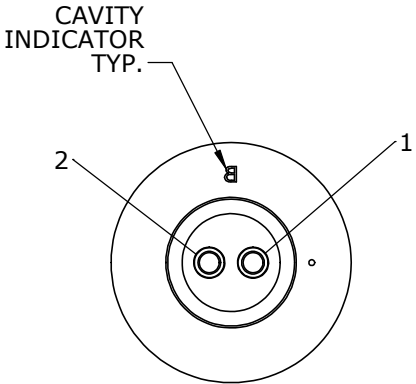


7/16-28 UNEF-2A
MOD. THREAD

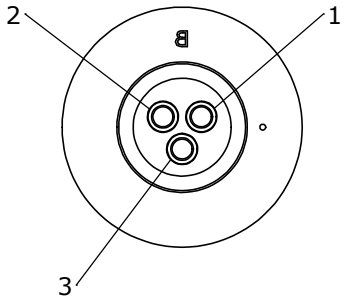
PANEL CONNECTOR, FEMALE
MAT'L: UV PBT, BLACK



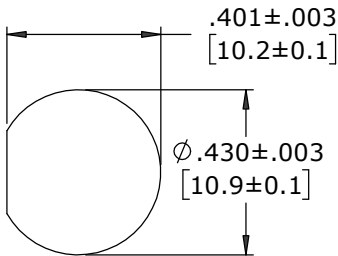
(2-3) #20 SOCKET CONTACTS, CRIMP
MAT'L: GOLD PLATED COPPER ALLOY




WIRE VIEW
W17280-2SG-P-300



WIRE VIEW
W17280-3SG-P-300



**RECOMMENDED
PANEL CUT-OUT**

CUSTOMER APPROVAL																		
THIS DOCUMENT CONTAINS CONFIDENTIAL INFORMATION PROPRIETARY TO CONXALL CORPORATION. ANY REPRODUCTION, DISCLOSURE, OR USE OF THIS DOCUMENT /INFORMATION IS EXPRESSLY PROHIBITED UNLESS AUTHORIZED IN WRITING BY CONXALL CORPORATION.																		
										A	MA	08-12-20	RELEASED PER PDR 18004-2					
											JGK	8/13/19	DRAWING CREATED FOR PDR #18004					
										REV.	INIT.	DATE	DESCRIPTION					
ALL INFORMATION ILLUSTRATED IS THE PROPERTY OF "CONXALL CORPORATION". UNAUTHORIZED DUPLICATION OR DISTRIBUTION OF THIS DOCUMENT IS PROHIBITED.			ORIG. DRAWN BY:		DATE:		 601 E. WILDWOOD VILLA PARK, IL 60181											
			JGK		8/13/19													
ALL UNITS ARE IN FEET, INCHES, FRACTION OF INCHES AND DECIMALS.			CHECKED BY:		TITLE: PANEL MOUNT ASSEMBLY (2-3) #20 SOCKET CONTACTS, CRIMP INSTA-CLICK™ MICRO-CON-X STANDARD PRODUCT													
APPROVED BY: _____ DATE: _____			APPROVED BY:		CUSTOMER: _____													
APPROVED BY: _____ DATE: _____			SCALE	SIZE	SHEET		PART NUMBER: W17280-XSG-P-300											
			NTS	B	1 OF 1													
APPROVED BY: _____ DATE: _____			FILE:		DIRECTORY:		REV A											
			W17280-XSG-P-300		SLW													
UNCLASSIFIED			RoHS COMPLIANT															
			▷ = CRITICAL CHARACTERISTIC FLAG PER SPEC. XXXX															

DIMENSIONS IN BRACKETS [] ARE IN MILLIMETERS UNLESS INDICATED

RoHS COMPLIANT

▷ = CRITICAL CHARACTERISTIC FLAG PER SPEC. XXXX