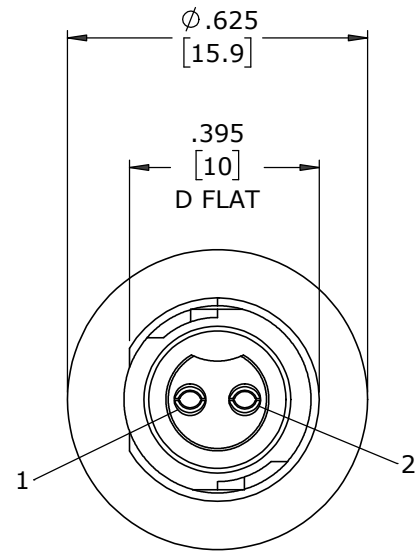


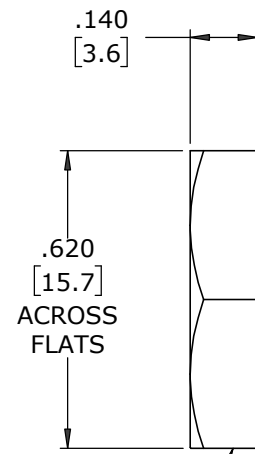
ASS'Y P/N	CONTACT QTY
W17281-2SG-P-3ES	2 #20
W17281-3SG-P-3ES	3 #20

NOTES:

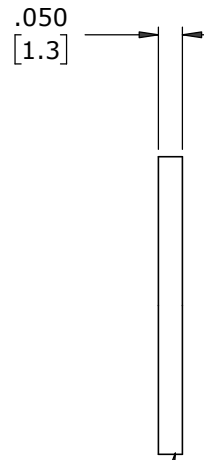
1. ALL PARTS ARE BULK PACKED
2. CONTACTS INSERTED INTO HOUSING AS SHOWN.
3. REAR OF CONNECTOR FILLED WITH EPOXY
4. SEE DRAWING HPMCSTD FOR HOLE PATTERN.
5. ALL DIMENSIONS ARE REFERENCE EXCEPT THOSE WITH A TOLERANCE



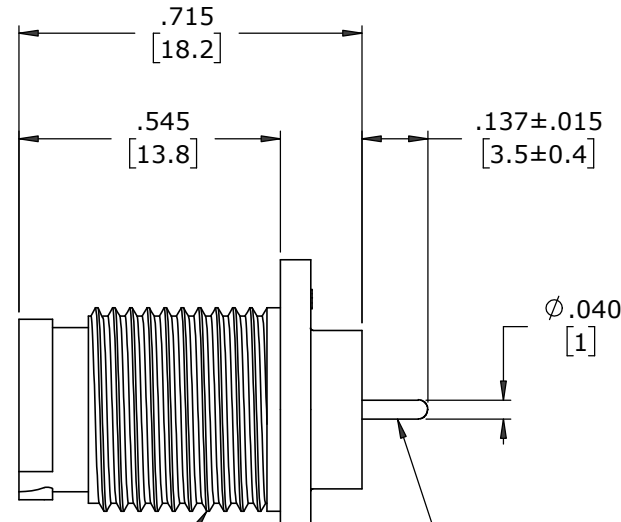
FACE VIEW
W17281-2SG-P-3ES



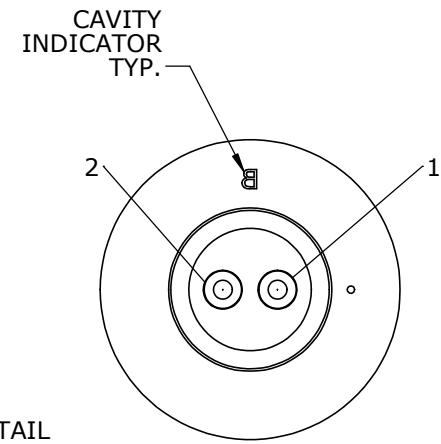
HEX NUT
MAT'L: UV PBT, BLACK



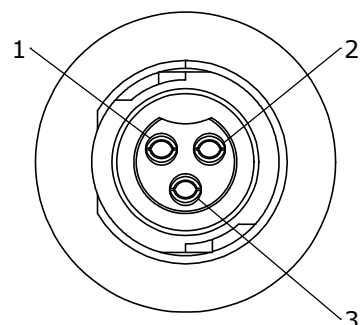
GASKET
MAT'L: NEOPRENE, BLACK



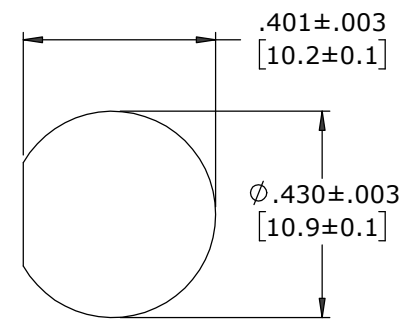
7/16-28 UNEF-2A MOD. THREAD
PANEL CONNECTOR, FEMALE
MAT'L: UV PBT, BLACK
(2-3) #20 SOCKET CONTACTS, PC TAIL
MAT'L: GOLD PLATED COPPER ALLOY



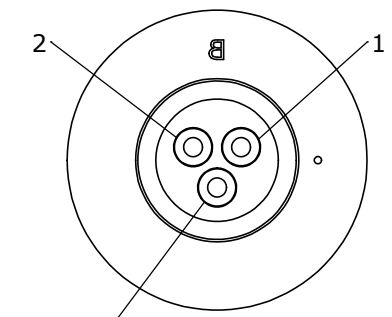
WIRE VIEW
W17281-2SG-P-3ES



FACE VIEW
W17281-3SG-P-3ES



**RECOMMENDED
PANEL CUT-OUT**



WIRE VIEW
W17281-3SG-P-3ES

CUSTOMER PRINT

PART NUMBER: W17281-XSG-P-3ES

CUSTOMER APPROVAL

THIS DOCUMENT CONTAINS CONFIDENTIAL INFORMATION PROPRIETARY TO CONXALL CORPORATION. ANY REPRODUCTION, DISCLOSURE, OR USE OF THIS DOCUMENT /INFORMATION IS EXPRESSLY PROHIBITED UNLESS AUTHORIZED IN WRITING BY CONXALL CORPORATION.

APPROVED BY: _____
DATE: _____

A	MA	08-05-20	DRAWING CREATED FOR PDR 18004-2
REV.	INIT.	DATE	DESCRIPTION
	MA	08-05-20	ORIG. DRAWN BY: DATE: 08-05-20
ALL INFORMATION ILLUSTRATED IS THE PROPERTY OF "CONXALL CORPORATION". UNAUTHORIZED DUPLICATION OR DISTRIBUTION OF THIS DOCUMENT IS PROHIBITED.			<p>601 E. WILDWOOD VILLA PARK, IL 60181</p>
ALL UNITS ARE IN FEET, INCHES, FRACTION OF INCHES AND DECIMALS.			
APPROVED BY:		TITLE: PANEL MOUNT ASSEMBLY (2-3) #20 SOCKET CONTACTS, PC TAIL INSTA-CLICK™ MICRO-CON-X STANDARD PRODUCT	
SCALE: NTS	SIZE: B	SHEET: 1 OF 1	CUSTOMER:
FILE: W17281-XSG-P-3ES	DIRECTORY: SLW	PART NUMBER: W17281-XSG-P-3ES	REV: A

DIMENSIONS IN BRACKETS [] ARE IN MILLIMETERS UNLESS INDICATED

RoHS COMPLIANT