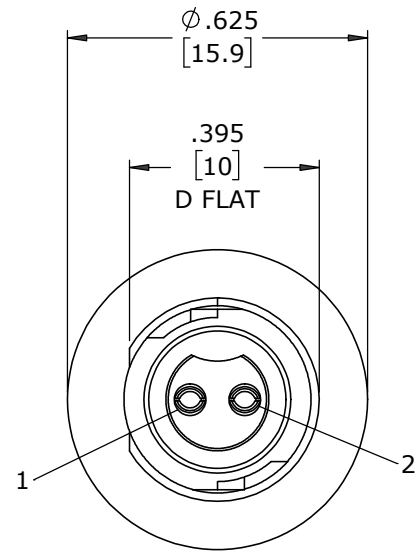


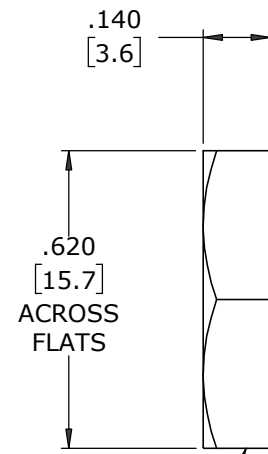
ASS'Y P/N	CONTACT QTY
W17282-2SG-P-3ES	2 #20
W17282-3SG-P-3ES	3 #20

NOTES:

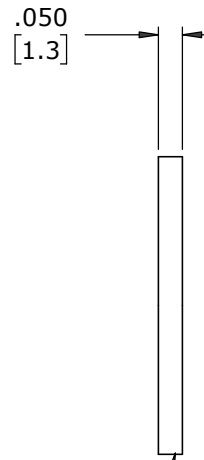
1. PARTS TO BE BULK PACKED
2. CONTACTS INSERTED INTO HOUSING AS SHOWN.
3. REAR OF CONNECTOR FILLED WITH EPOXY
4. ALL DIMENSIONS ARE REFERENCE EXCEPT THOSE WITH A TOLERANCE



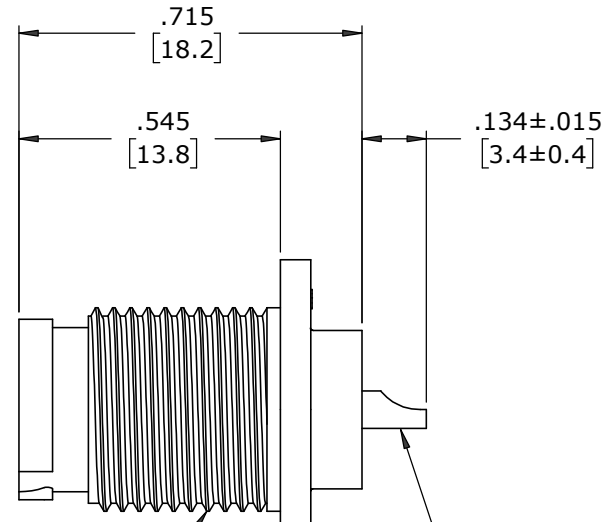
FACE VIEW
W17282-2SG-P-3ES



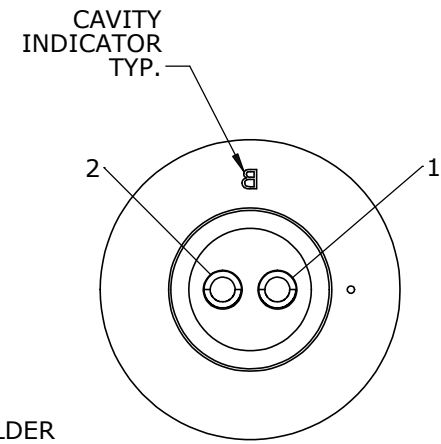
HEX NUT
MAT'L: UV PBT, BLACK



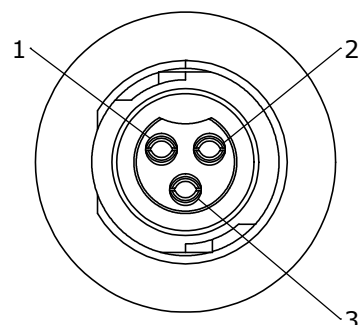
GASKET
MAT'L: NEOPRENE, BLACK



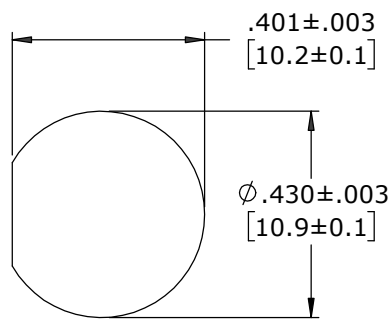
7/16-28 UNEF-2A MOD. THREAD
PANEL CONNECTOR, FEMALE
MAT'L: UV PBT, BLACK
(2-3) #20 SOCKET CONTACTS, SOLDER
MAT'L: GOLD PLATED COPPER ALLOY



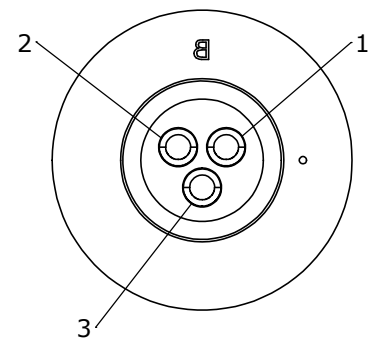
WIRE VIEW
W17282-2SG-P-3ES



FACE VIEW
W17282-3SG-P-3ES



**RECOMMENDED
PANEL CUT-OUT**



WIRE VIEW
W17282-3SG-P-3ES

CUSTOMER PRINT

PART NUMBER: W17282-XSG-P-3ES

CUSTOMER APPROVAL

THIS DOCUMENT CONTAINS CONFIDENTIAL INFORMATION PROPRIETARY TO CONXALL CORPORATION. ANY REPRODUCTION, DISCLOSURE, OR USE OF THIS DOCUMENT /INFORMATION IS EXPRESSLY PROHIBITED UNLESS AUTHORIZED IN WRITING BY CONXALL CORPORATION.

APPROVED BY: _____
DATE: _____

A	MA	08-06-20	DRAWING CREATED FOR PDR 18004-2
REV.	INIT.	DATE	DESCRIPTION
	MA	08-06-20	ORIG. DRAWN BY: DATE: 08-06-20
ALL INFORMATION ILLUSTRATED IS THE PROPERTY OF "CONXALL CORPORATION". UNAUTHORIZED DUPLICATION OR DISTRIBUTION OF THIS DOCUMENT IS PROHIBITED.			<p>601 E. WILDWOOD VILLA PARK, IL 60181</p>
ALL UNITS ARE IN FEET, INCHES, FRACTION OF INCHES AND DECIMALS.			
APPROVED BY:		TITLE: PANEL MOUNT ASSEMBLY (2-3) #20 SOCKET CONTACTS, SOLDER INSTA-CLICK™ MICRO-CON-X STANDARD PRODUCT	
SCALE	SIZE	SHEET	CUSTOMER:
NTS	B	1 OF 1	
FILE:	DIRECTORY:	PART NUMBER:	REV
W17282-XSG-P-3ES	SLW	W17282-XSG-P-3ES	A

DIMENSIONS IN BRACKETS [] ARE IN MILLIMETERS UNLESS INDICATED

RoHS COMPLIANT