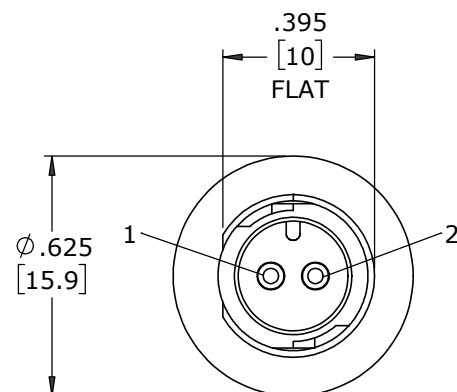


ASS'Y P/N	NO. OF CONTACTS
W17291-2PG-P-3ES	2 #20
W17291-3PG-P-3ES	3 #20

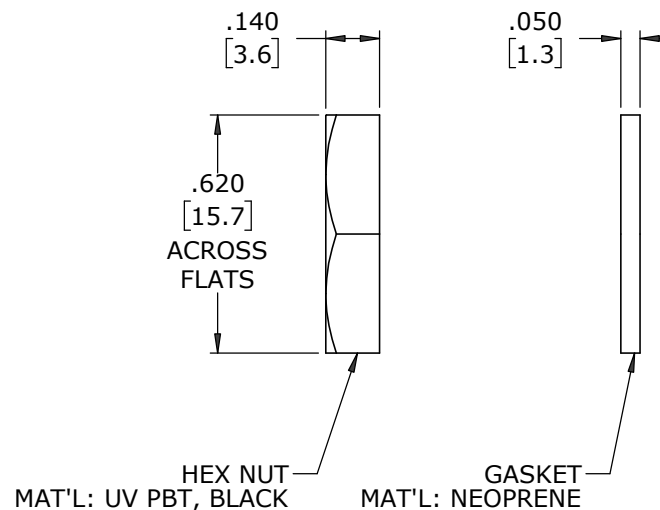
**NOTES:**

- PANEL CONNECTORS TO BE PACKED IN PARTITION BOX, 200 PC PER BOX  
HEX NUT AND GASKET TO BE BULK PACKED IN A SEPARATE BAG  
FROM PANEL ASSEMBLY PACKAGE.  
a) INNER BOX LABELED WITH CXA PART NUMBER, QUANTITY, LOT #  
AND DATE CODE AS SHOWN
- CONTACTS ARE INSERTED INTO PANEL CONNECTOR.
- BACK END OF CONNECTOR FILLED WITH EPOXY
- SEE DRAWING HPMCSTD FOR HOLE PATTERN
- ALL DIMENSIONS ARE FOR REFERENCE ONLY UNLESS OTHERWISE SPECIFIED.

P/N: W17291-XPG-P-3ES  
CONXALL  
QTY:  
Lot:  
Date Code:

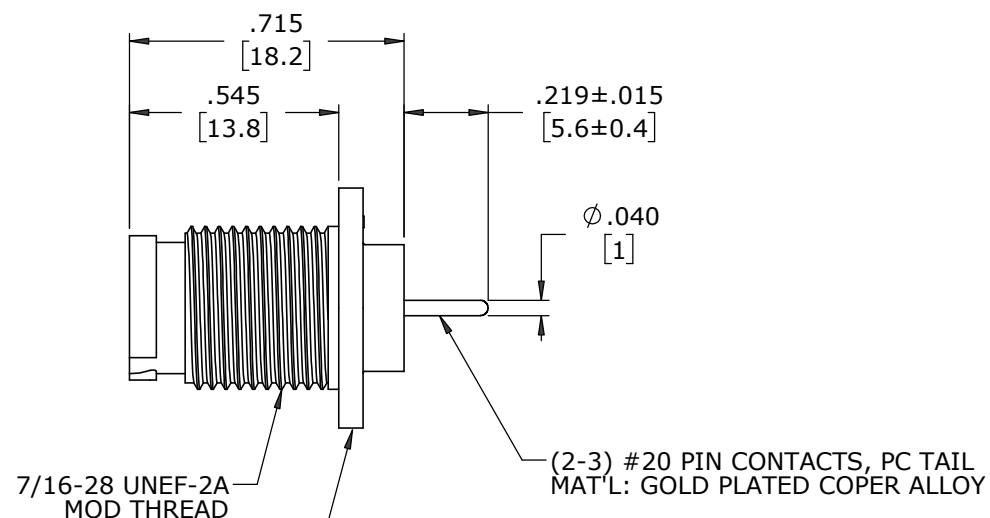


**FACE VIEW**  
W17291-2PG-P-3ES

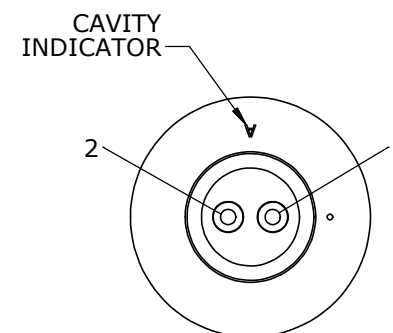


HEX NUT  
MAT'L: UV PBT, BLACK

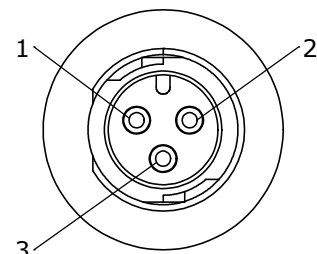
GASKET  
MAT'L: NEOPRENE



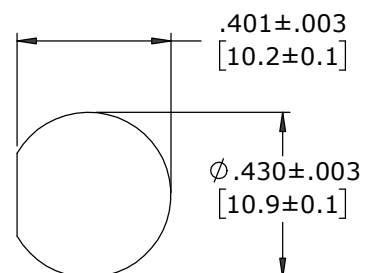
PANEL CONNECTOR, MALE  
MAT'L: UV PBT, BLACK



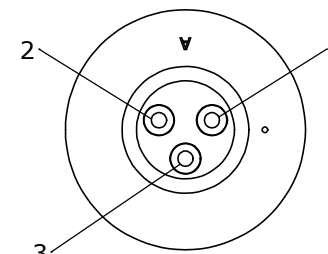
**WIRE VIEW**  
W17291-2PG-P-3ES



**FACE VIEW**  
W17291-3PG-P-3ES



**RECOMMENDED  
PANEL CUT-OUT**



**WIRE VIEW**  
W17291-3PG-P-3ES

**CUSTOMER APPROVAL**

THIS DOCUMENT CONTAINS CONFIDENTIAL INFORMATION PROPRIETARY TO CONXALL CORPORATION. ANY REPRODUCTION, DISCLOSURE, OR USE OF THIS DOCUMENT /INFORMATION IS EXPRESSLY PROHIBITED UNLESS AUTHORIZED IN WRITING BY CONXALL CORPORATION.

APPROVED BY: \_\_\_\_\_  
DATE: \_\_\_\_\_

A	MA	08-13-20	DRAWING CREATED PER PDR 18004-2	
REV.	INIT.	DATE	DESCRIPTION	
	MA	08-13-20	ORIG. DRAWN BY: MA	DATE: 08-13-20
ALL INFORMATION ILLUSTRATED IS THE PROPERTY OF "CONXALL CORPORATION". UNAUTHORIZED DUPLICATION OR DISTRIBUTION OF THIS DOCUMENT IS PROHIBITED.			<p>601 E. WILDWOOD VILLA PARK, IL 60181</p>	
ALL UNITS ARE IN FEET, INCHES, FRACTION OF INCHES AND DECIMALS.				
APPROVED BY: _____			TITLE: PANEL ASSEMBLY (2-3) #20 PIN CONTACTS, PC TAIL INSTA-CLICK™ MICRO-CON-X STANDARD PRODUCT	
SCALE	SIZE	SHEET	CUSTOMER:	
NTS	B	1 OF 1	PART NUMBER: W17291-XPG-P-3ES	
FILE:	DIRECTORY:	PART NUMBER:	REV	
W17291-XPG-P-3ES	SLW	W17291-XPG-P-3ES	A	

DIMENSIONS IN BRACKETS [ ] ARE IN MILLIMETERS UNLESS INDICATED

**RoHS COMPLIANT**

▷ - CRITICAL CHARACTERISTIC FLAG PER SPEC. XXXX

CUSTOMER PRINT

PART NUMBER: W17291-XPG-P-3ES