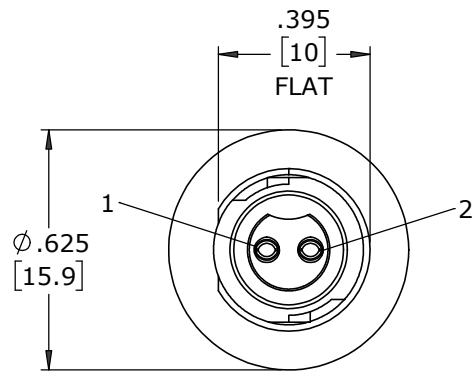


ASS'Y P/N	NO. OF CONTACTS
W17291-2SG-P-300	2 #20
W17291-3SG-P-300	3 #20

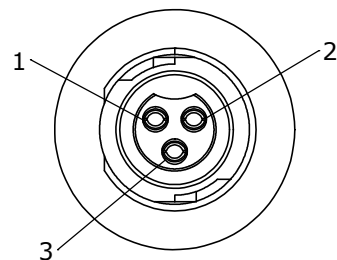
**NOTES:**

- PANEL CONNECTORS TO BE PACKED IN PARTITION BOX, 200 PC PER BOX  
HEX NUT AND GASKET TO BE BULK PACKED IN A SEPARATE BAG  
FROM PANEL ASSEMBLY PACKAGE.  
a) INNER BOX LABELED WITH CXA PART NUMBER, QUANTITY, LOT #  
AND DATE CODE AS SHOWN
- CONTACTS ARE INSERTED INTO PANEL CONNECTOR.
- SEE DRAWING HPMCSTD FOR HOLE PATTERN
- ALL DIMENSIONS ARE FOR REFERENCE ONLY UNLESS OTHERWISE SPECIFIED.

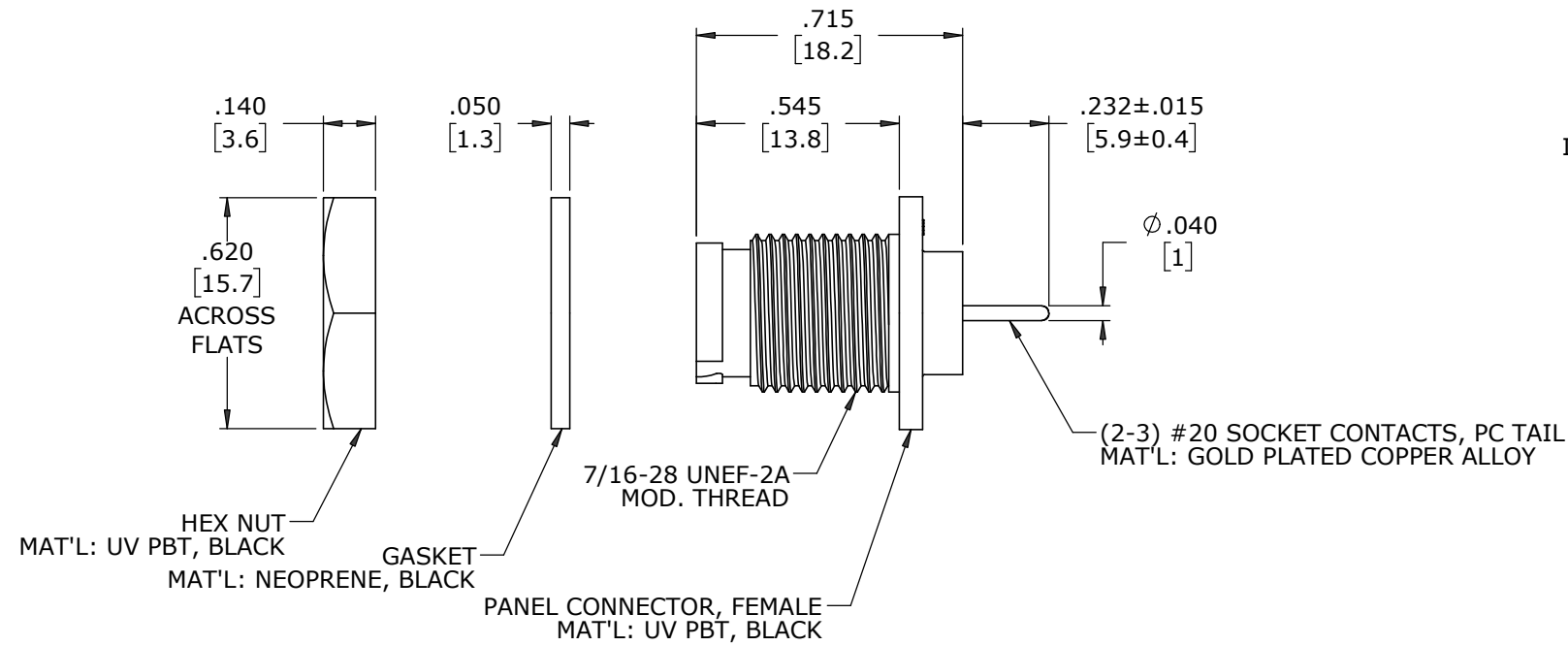
P/N: W17291-XSG-P-300  
CONXALL  
QTY:  
Lot:  
Date Code:



**FACE VIEW**  
W17291-2SG-P-300



**FACE VIEW**  
W17291-3SG-P-300

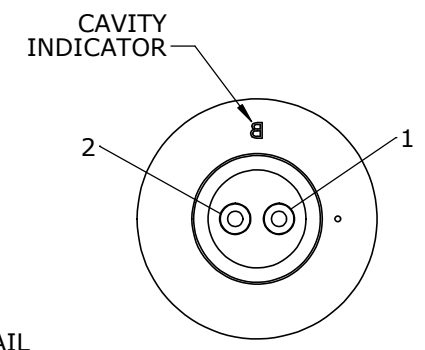


HEX NUT  
MAT'L: UV PBT, BLACK

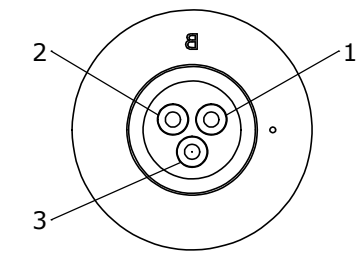
GASKET  
MAT'L: NEOPRENE, BLACK

PANEL CONNECTOR, FEMALE  
MAT'L: UV PBT, BLACK

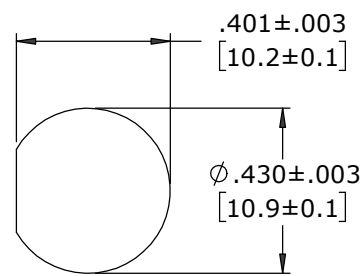
(2-3) #20 SOCKET CONTACTS, PC TAIL  
MAT'L: GOLD PLATED COPPER ALLOY



**WIRE VIEW**  
W17291-2SG-P-300



**WIRE VIEW**  
W17291-3SG-P-300



**RECOMMENDED  
PANEL CUT-OUT**

**CUSTOMER APPROVAL**

THIS DOCUMENT CONTAINS CONFIDENTIAL INFORMATION PROPRIETARY TO CONXALL CORPORATION. ANY REPRODUCTION, DISCLOSURE, OR USE OF THIS DOCUMENT /INFORMATION IS EXPRESSLY PROHIBITED UNLESS AUTHORIZED IN WRITING BY CONXALL CORPORATION.

APPROVED BY: \_\_\_\_\_  
DATE: \_\_\_\_\_

A	MA	08-13-20	DRAWING CREATED PER PDR 18004-2
REV.	INIT.	DATE	DESCRIPTION
	MA	08-13-20	ORIG. DRAWN BY: MA DATE: 08-13-20
ALL INFORMATION ILLUSTRATED IS THE PROPERTY OF CONXALL CORPORATION. UNAUTHORIZED DUPLICATION OR DISTRIBUTION OF THIS DOCUMENT IS PROHIBITED.			 601 E. WILDWOOD VILLA PARK, IL 60181
ALL UNITS ARE IN FEET, INCHES, FRACTIONS OF INCHES AND DECIMALS.			
APPROVED BY:		TITLE: PANEL ASSEMBLY (2-3) #20 SOCKET CONTACTS, PC TAIL INSTA-CLICK™ MICRO-CON-X STANDARD PRODUCT	
SCALE	SIZE	SHEET	CUSTOMER:
NTS	B	1 OF 1	
FILE:	DIRECTORY:	PART NUMBER:	REV
W17291-XSG-P-300	SLW	W17291-XSG-P-300	A

DIMENSIONS IN BRACKETS [ ] ARE IN MILLIMETERS UNLESS INDICATED

**RoHS COMPLIANT**

CRITICAL CHARACTERISTIC FLAG PER SPEC. XXXX

CUSTOMER PRINT

PART NUMBER: W17291-XSG-P-300