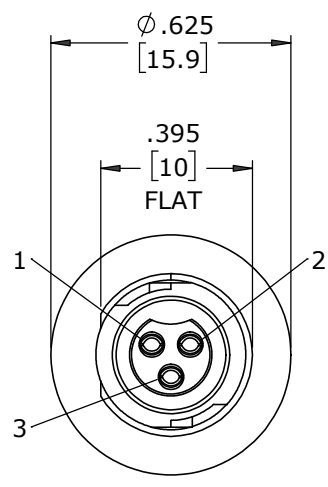


ASS'Y P/N	NO. OF CONTACTS
W17292-2SG-P-300	2
W17292-3SG-P-300	3

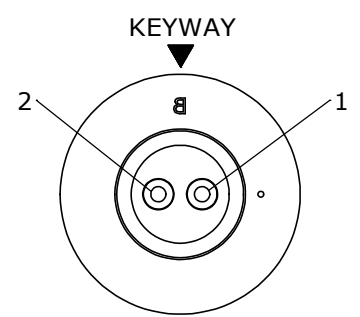
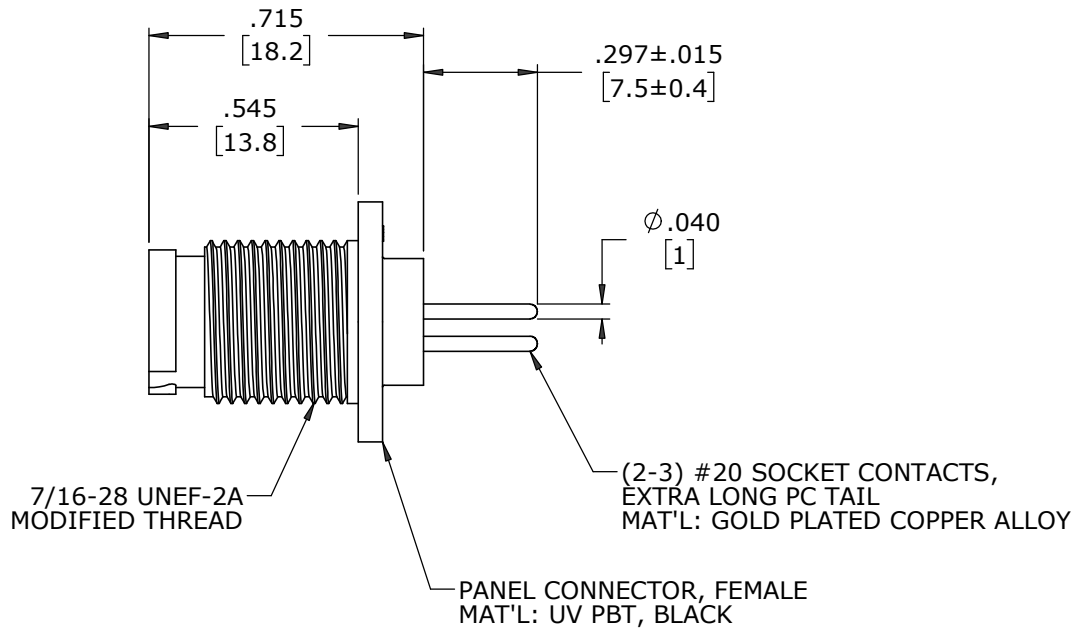
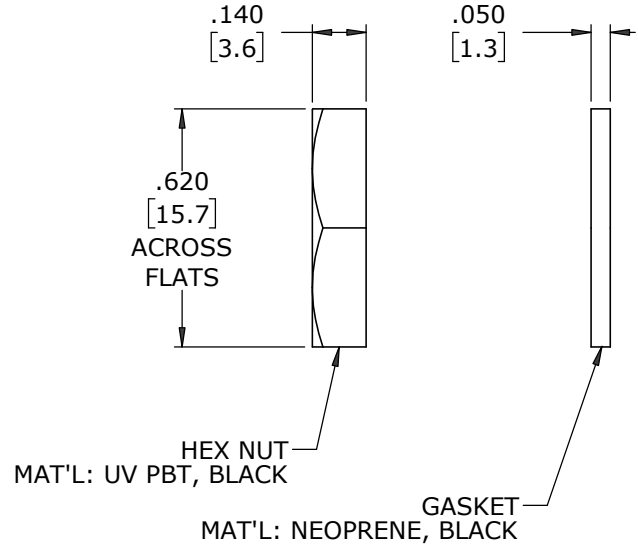
**NOTES:**

- PANEL CONNECTORS TO BE PACKED IN PARTITION BOX, 200 PC PER BOX  
HEX NUT AND GASKET TO BE BULK PACKED IN A SEPARATE BAG FROM  
PANEL ASSEMBLY PACKAGE.  
a) INNER BOX LABELED WITH CXA PART NUMBER, QUANTITY, LOT #  
AND DATE CODE AS SHOWN
- CONTACTS ARE INSERTED INTO PANEL CONNECTOR.
- SEE DRAWING HPMCSTD FOR HOLE PATTERN.
- ALL DIMENSIONS ARE REFERENCE EXCEPT THOSE WITH A TOLERANCE

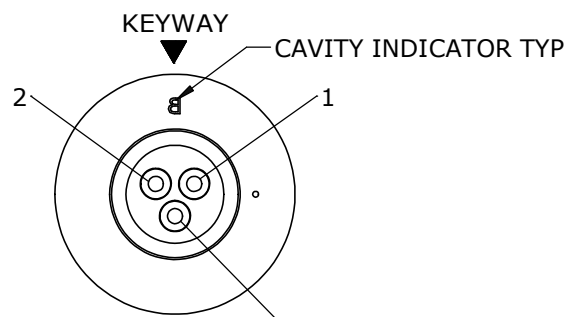
P/N: W17292-XSG-P-300  
CONXALL  
QTY:  
Lot:  
Date Code:



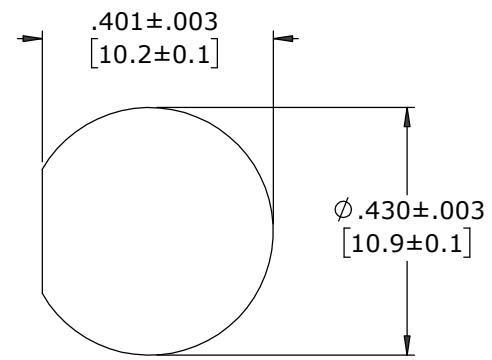
**FACE VIEW**  
W17292-3SG-P-300



**WIRE VIEW**  
W17292-2SG-P-300



**WIRE VIEW**  
W17292-3SG-P-300



**RECOMMENDED  
PANEL CUT-OUT**

DIMENSIONS IN BRACKETS [ ] ARE IN MILLIMETERS UNLESS INDICATED

**CUSTOMER APPROVAL**

THIS DOCUMENT CONTAINS CONFIDENTIAL INFORMATION PROPRIETARY TO CONXALL CORPORATION. ANY REPRODUCTION, DISCLOSURE, OR USE OF THIS DOCUMENT /INFORMATION IS EXPRESSLY PROHIBITED UNLESS AUTHORIZED IN WRITING BY CONXALL CORPORATION.

APPROVED BY: \_\_\_\_\_  
DATE: \_\_\_\_\_

A	MA	07-31-20	DRAWING CREATED PER PDR 18004-2
REV.	INIT.	DATE	DESCRIPTION
	MA	07-31-20	ORIG. DRAWN BY: DATE: MA 07-31-20
ALL INFORMATION ILLUSTRATED IS THE PROPERTY OF "CONXALL CORPORATION". UNAUTHORIZED DUPLICATION OR DISTRIBUTION OF THIS DOCUMENT IS PROHIBITED.			 601 E. WILDWOOD VILLA PARK, IL 60181
ALL UNITS ARE IN FEET, INCHES, FRACTION OF INCHES AND DECIMALS.			
APPROVED BY: _____			TITLE: PANEL ASSEMBLY (2-3) #20 SOCKET CONTACTS, .345 PC TAIL INSTA-CLICK™ MICRO-CON-X STANDARD PRODUCT
SCALE	SIZE	SHEET	CUSTOMER:
NTS	B	1 OF 1	W17292-XSG-P-300
FILE:	DIRECTORY:	PART NUMBER:	REV
W17292-XSG-P-300	SLW	W17292-XSG-P-300	A

**RoHS COMPLIANT**

CUSTOMER PRINT

PART NUMBER: W17292-XSG-P-300