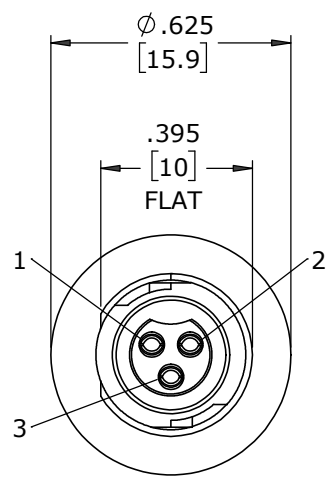


ASS'Y P/N	NO. OF CONTACTS
W17292-2SG-P-3ES	2
W17292-3SG-P-3ES	3

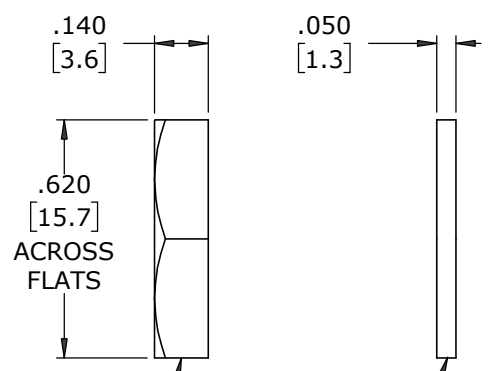
NOTES:

- PANEL CONNECTORS TO BE PACKED IN PARTITION BOX, 200 PC PER BOX
HEX NUT AND GASKET TO BE BULK PACKED IN A SEPARATE BAG FROM
PANEL ASSEMBLY PACKAGE.
a) INNER BOX LABELED WITH CXA PART NUMBER, QUANTITY, LOT #
AND DATE CODE AS SHOWN
- CONTACTS ARE INSERTED INTO PANEL CONNECTOR.
- BACK END OF CONNECTOR TO BE FILLED WITH EPOXY.
- SEE DRAWING HPMCSTD FOR HOLE PATTERN.
- ALL DIMENSIONS ARE REFERENCE EXCEPT THOSE WITH A TOLERANCE

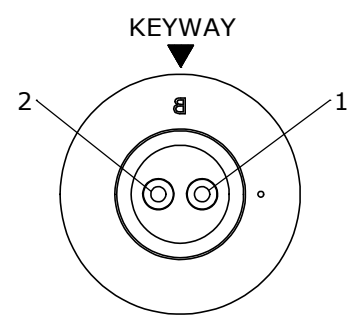
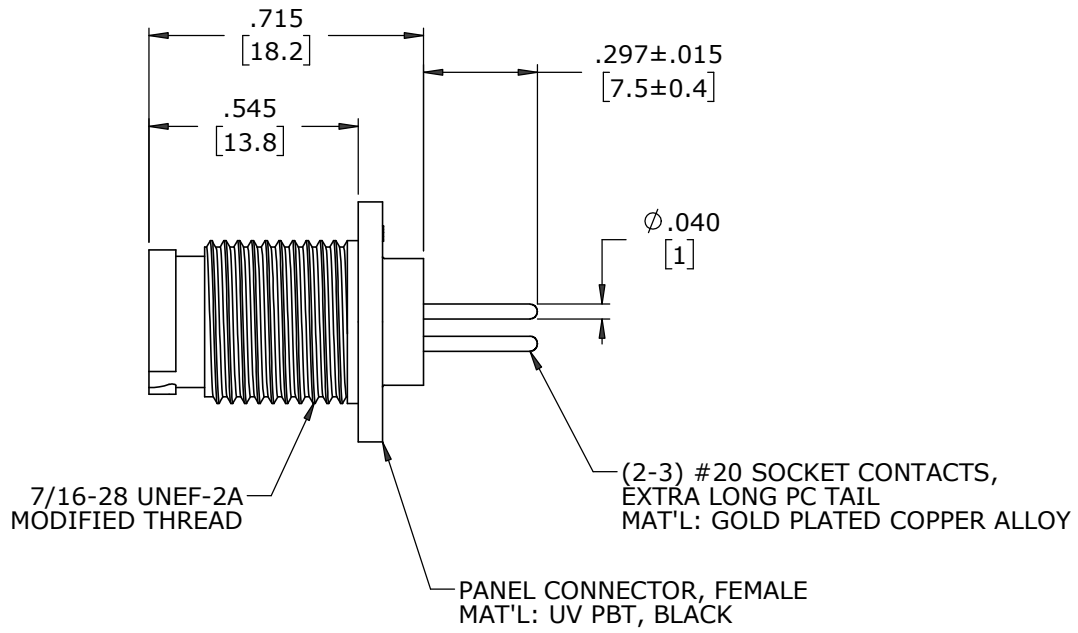
P/N: W17292-XSG-P-3ES
CONXALL
QTY:
Lot:
Date Code:



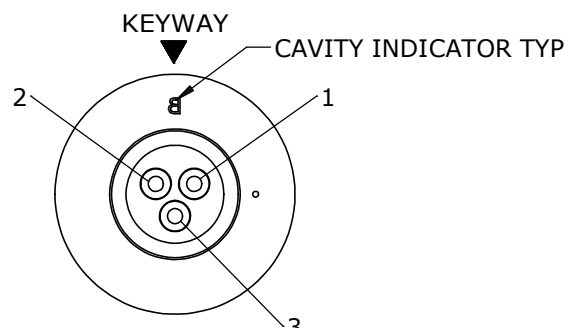
FACE VIEW
W17292-3SG-P-3ES



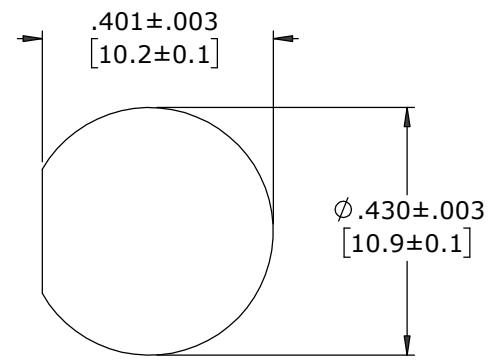
HEX NUT
MAT'L: UV PBT, BLACK
GASKET
MAT'L: NEOPRENE, BLACK



WIRE VIEW
W17292-2SG-P-3ES



WIRE VIEW
W17292-3SG-P-3ES



**RECOMMENDED
PANEL CUT-OUT**

DIMENSIONS IN BRACKETS [] ARE IN MILLIMETERS UNLESS INDICATED

CUSTOMER APPROVAL
THIS DOCUMENT CONTAINS CONFIDENTIAL INFORMATION PROPRIETARY TO CONXALL CORPORATION. ANY REPRODUCTION, DISCLOSURE, OR USE OF THIS DOCUMENT /INFORMATION IS EXPRESSLY PROHIBITED UNLESS AUTHORIZED IN WRITING BY CONXALL CORPORATION.
APPROVED BY: _____
DATE: _____

RoHS COMPLIANT

A	MA	08/05/20	DRAWING CREATED PER PDR 18004-2
REV.	INIT.	DATE	DESCRIPTION
	MA	08-05-20	ORIG. DRAWN BY: DATE: MA 08-05-20
ALL INFORMATION ILLUSTRATED IS THE PROPERTY OF "CONXALL CORPORATION". UNAUTHORIZED DUPLICATION OR DISTRIBUTION OF THIS DOCUMENT IS PROHIBITED.			 601 E. WILDWOOD VILLA PARK, IL 60181
ALL UNITS ARE IN FEET, INCHES, FRACTION OF INCHES AND DECIMALS.			
APPROVED BY: _____			TITLE: PANEL ASSEMBLY (2-3) #20 SOCKET CONTACTS, .345 PC TAIL INSTA-CLICK™ MICRO-CON-X STANDARD PRODUCT
SCALE	SIZE	SHEET	CUSTOMER:
NTS	B	1 OF 1	
FILE:	DIRECTORY:	PART NUMBER:	REV
W17292-XSG-P-3ES	SLW	W17292-XSG-P-3ES	A

CUSTOMER PRINT

PART NUMBER: W17292-XSG-P-3ES