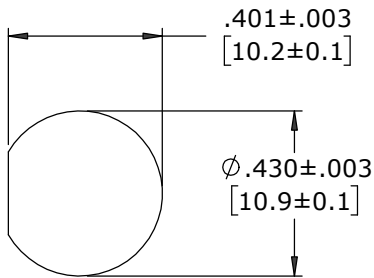
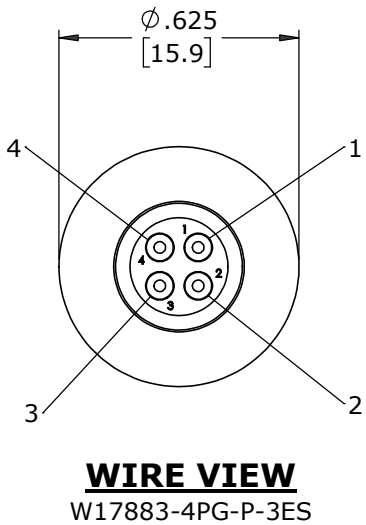
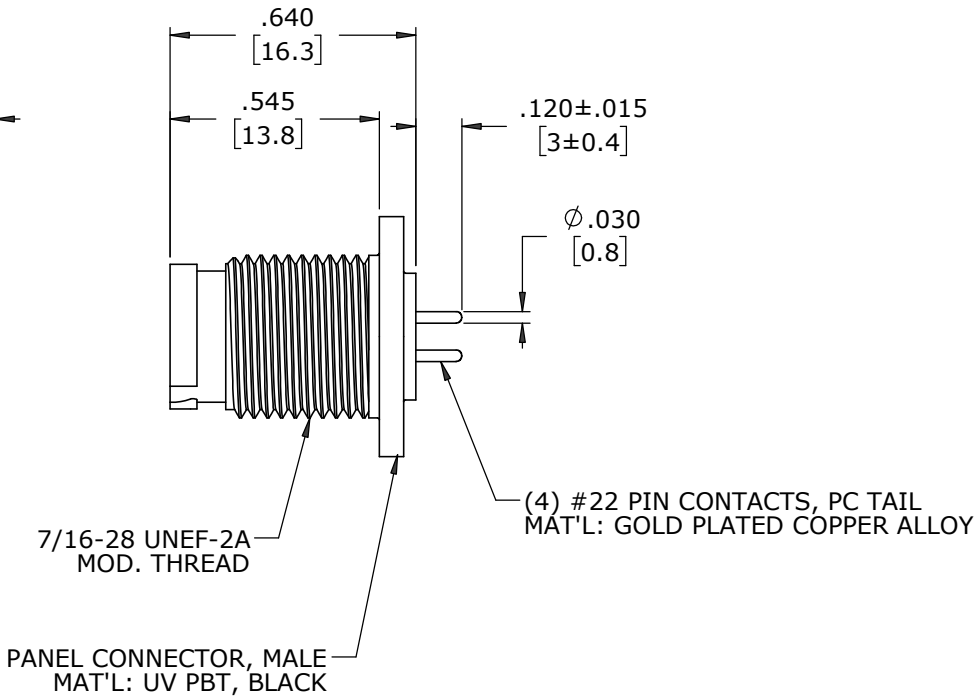
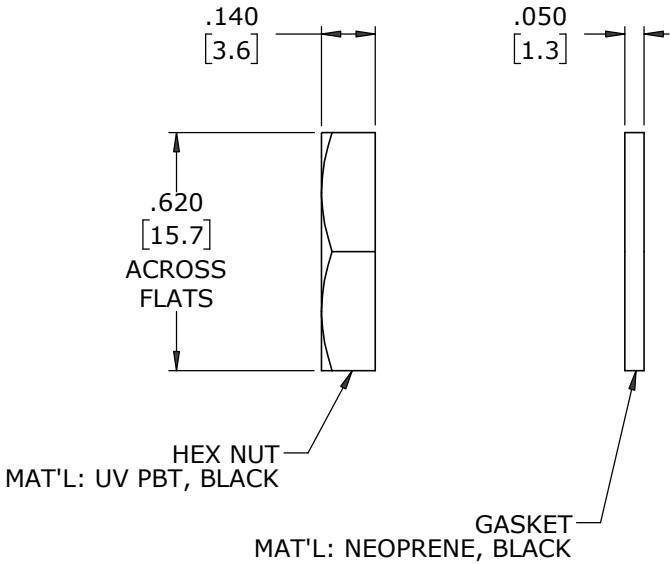
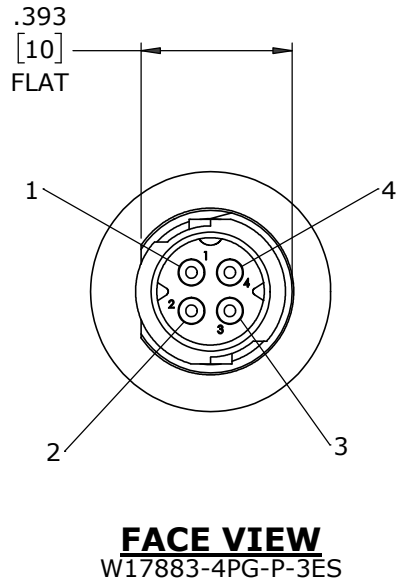


- NOTES:
- 1. CONNECTORS TO BE PACKED IN PARTITION BOX, 200 PC PER BOX. HEX NUT AND GASKET TO BE BULK PACKED IN A SEPARATE BAG FROM ASSEMBLY PACKAGE.
    - a) INNER BOX LABELED WITH CXA PART NUMBER, QUANTITY, LOT # AND DATE CODE AS SHOWN
  - 2. CONTACTS INSERTED INTO HOUSING AS SHOWN.
  - 3. BACK END OF CONNECTOR FILLED WITH EPOXY
  - 4. SEE DRAWING HPMCSTD FOR HOLE PATTERN.
  - 5. ALL DIMENSIONS ARE REFERENCE EXCEPT THOSE WITH A TOLERANCE

P/N: W17883-4PG-P-3ES  
CONXALL  
QTY:  
Lot:  
Date Code:



CUSTOMER APPROVAL	
THIS DOCUMENT CONTAINS CONFIDENTIAL INFORMATION PROPRIETARY TO CONXALL CORPORATION. ANY REPRODUCTION, DISCLOSURE, OR USE OF THIS DOCUMENT /INFORMATION IS EXPRESSLY PROHIBITED UNLESS AUTHORIZED IN WRITING BY CONXALL CORPORATION.	
APPROVED BY: _____	DATE: _____

A		MA		08-06-20		DRAWING CREATED FOR PDR 18004-2									
REV.		INIT.		DATE		DESCRIPTION									
<div>ALL INFORMATION ILLUSTRATED IS THE PROPERTY OF "CONXALL CORPORATION." UNAUTHORIZED DUPLICATION OR DISTRIBUTION OF THIS DOCUMENT IS PROHIBITED.</div> <div>ALL UNITS ARE IN FEET, INCHES, FRACTION OF INCHES AND DECIMALS.</div>						ORIG. DRAWN BY:		DATE:		<div>CONXALL</div> <div>601 E. WILDWOOD VILLA PARK, IL 60181</div>					
						MA		08-06-20							
						CHECKED BY:									
						APPROVED BY:		TITLE:		PANEL MOUNT ASSEMBLY (4) #22 PIN CONTACTS, PC TAIL INSTA-CLICK™ MICRO-CON-X STANDARD PRODUCT					
						SCALE		SIZE						SHEET	
						NTS		B						1 OF 1	
<div>▷ = CRITICAL CHARACTERISTIC FLAG PER SPEC. XXXX</div>						FILE:		DIRECTORY:		PART		REV			
						W17883-4PG-P-3ES		SLW		NUMBER:		A			
								W17883-4PG-P-3ES							

DIMENSIONS IN BRACKETS [ ] ARE IN MILLIMETERS UNLESS INDICATED

RoHS COMPLIANT

➤ = CRITICAL CHARACTERISTIC FLAG PER SPEC. XXXX