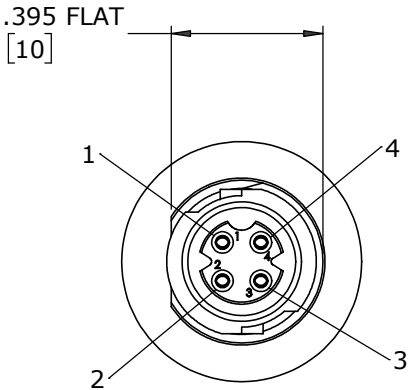


NOTES:

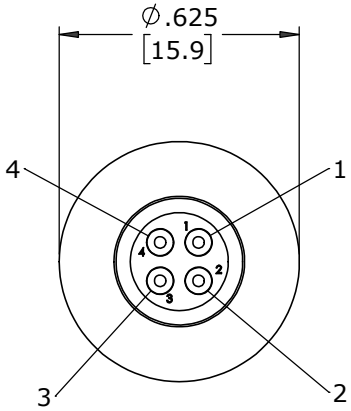
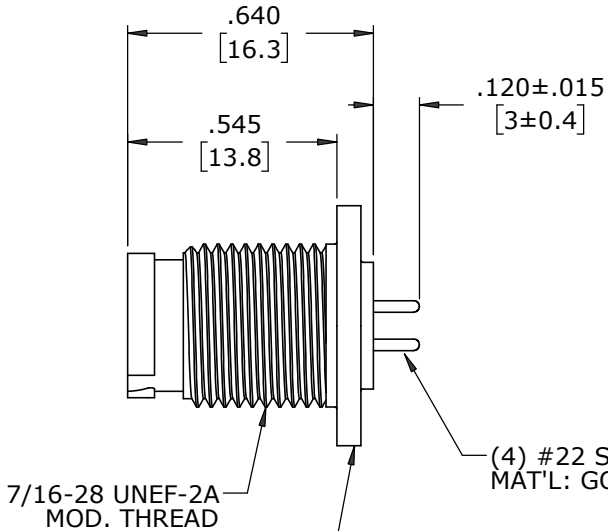
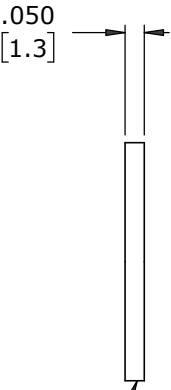
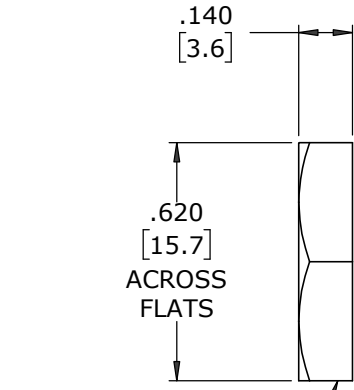
1. CONNECTORS TO BE PACKED IN PARTITION BOX, 200 PC PER BOX.
HEX NUT AND GASKET TO BE BULK PACKED IN A SEPARATE BAG FROM ASSEMBLY PACKAGE.
a) INNER BOX LABELED WITH CXA PART NUMBER, QUANTITY, LOT # AND DATE CODE AS SHOWN
2. CONTACTS INSERTED INTO HOUSING AS SHOWN.
3. BACK END OF CONNECTOR FILLED WITH EPOXY
4. SEE DRAWING HPMCSTD FOR HOLE PATTERN.
5. ALL DIMENSIONS ARE REFERENCE EXCEPT THOSE WITH A TOLERANCE

P/N: W17883-4SG-P-3ES
CONXALL

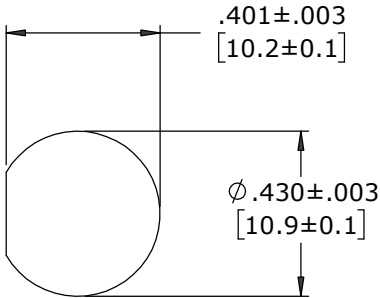
QTY:
Lot:
Date Code:



FACE VIEW
W17883-4SG-P-3ES



WIRE VIEW
W17883-4SG-P-3ES



RECOMMENDED
PANEL CUT-OUT

CUSTOMER APPROVAL

THIS DOCUMENT CONTAINS CONFIDENTIAL INFORMATION PROPRIETARY TO CONXALL CORPORATION. ANY REPRODUCTION, DISCLOSURE, OR USE OF THIS DOCUMENT /INFORMATION IS EXPRESSLY PROHIBITED UNLESS AUTHORIZED IN WRITING BY CONXALL CORPORATION.

APPROVED BY: _____
DATE: _____

A		MA		08-06-20		DRAWING CREATED PER PDR 18004-2									
REV.		INIT.		DATE		DESCRIPTION									
<div>ALL INFORMATION ILLUSTRATED IS THE PROPERTY OF "CONXALL CORPORATION." UNAUTHORIZED DUPLICATION OR DISTRIBUTION OF THIS DOCUMENT IS PROHIBITED.</div> <div>ALL UNITS ARE IN FEET, INCHES, FRACTION OF INCHES AND DECIMALS.</div>						ORIG. DRAWN BY:		DATE:		<div>conxall</div> <div>601 E. WILDWOOD VILLA PARK, IL 60181</div>					
						MA		08-06-20							
						CHECKED BY:									
						APPROVED BY:		TITLE: PANEL MOUNT ASSEMBLY (4) #22 SOCKET CONTACTS, PC TAIL INSTA-CLICK™ MICRO-CON-X STANDARD PRODUCT							
		SCALE		SIZE		SHEET		CUSTOMER:							
		NTS		B		1 OF 1									
		FILE:		W17883-4SG-P-3ES		DIRECTORY:		SLW		PART NUMBER:		W17883-4SG-P-3ES		REV	
		= CRITICAL CHARACTERISTIC FLAG PER SPEC. XXXX												A	

DIMENSIONS IN BRACKETS [] ARE IN MILLIMETERS UNLESS INDICATED

RoHS COMPLIANT

➤ = CRITICAL CHARACTERISTIC FLAG PER SPEC. XXXX