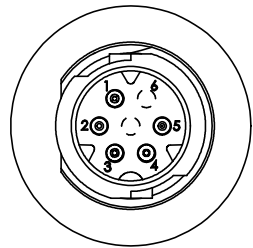
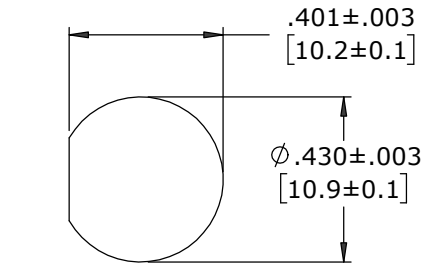


ASS'Y P/N	NO. OF CONTACTS	KEY STYLE
W17982-5PG-P-3ES	5 #26	A-KEY
W17982-6PG-P-3ES	6 #26	B-KEY
W17982-7PG-P-3ES	7 #26	A-KEY

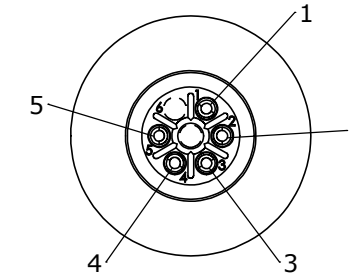
- NOTES:
1. ALL PARTS TO BE BULK PACKED
 2. CONTACTS INSERTED INTO CONNECTOR WITH SOLDER CUPS FACING OUTWARD RADIALLY. THE CENTER CONTACT SHOULD BE FACING BETWEEN POSITION 1 AND 6
 3. BACK END OF CONNECTOR FILLED WITH EPOXY
 4. ALL DIMENSIONS ARE REFERENCE EXCEPT THOSE WITH A TOLERANCE



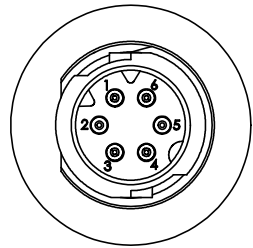
FACE VIEW
W17982-5PG-P-3ES
5 POSITION
A-KEY



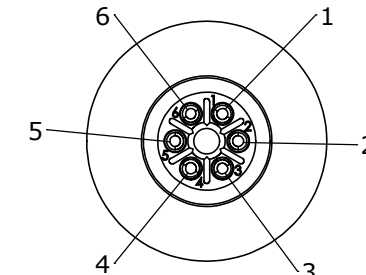
**RECCOMENDED
PANEL CUT-OUT**



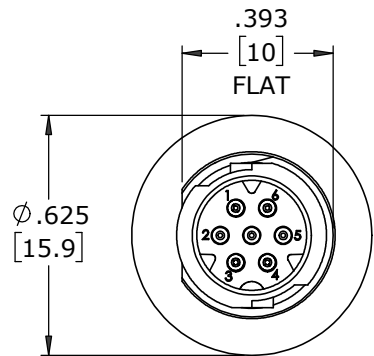
WIRE VIEW
W17982-5PG-P-3ES



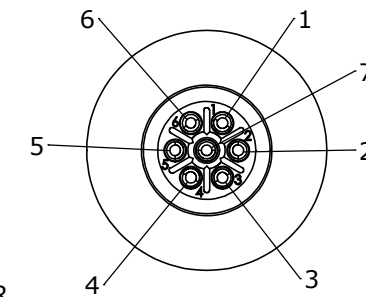
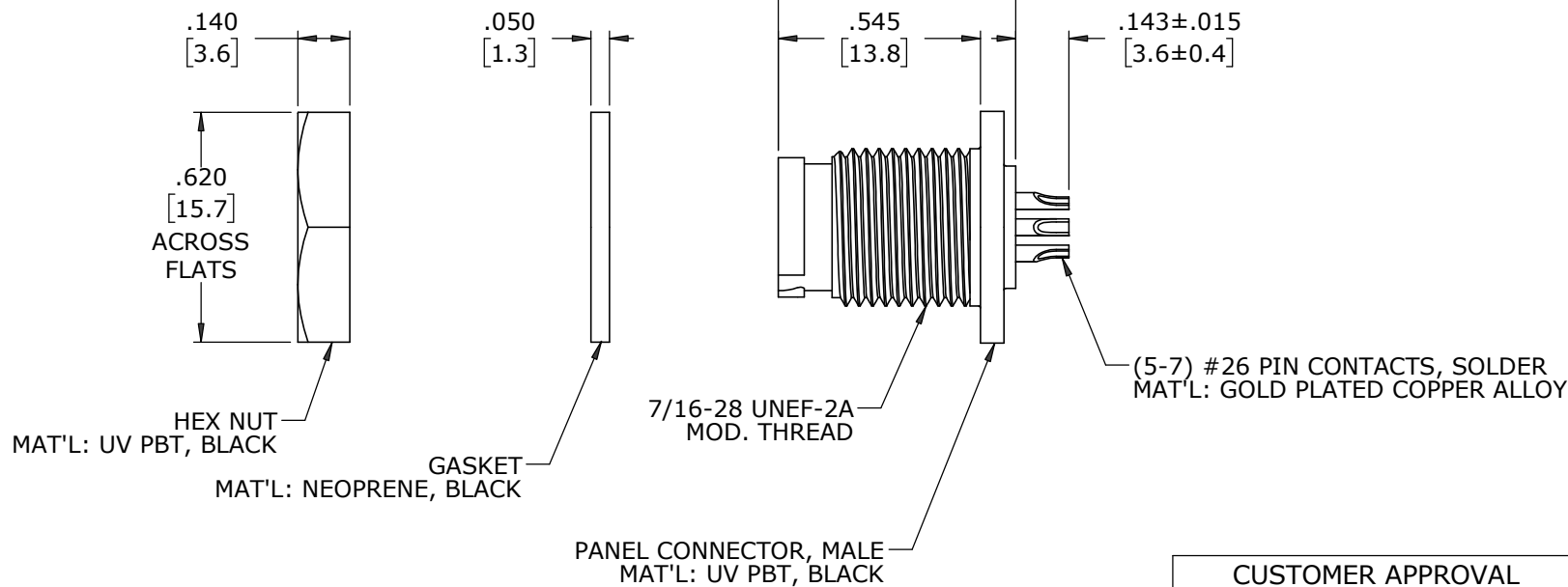
FACE VIEW
W17982-6PG-P-3ES
6 POSITION
B-KEY



WIRE VIEW
W17982-6PG-P-3ES



FACE VIEW
W17982-7PG-P-3ES
7 POSITION
A-KEY



WIRE VIEW
W17982-7PG-P-3ES

CUSTOMER PRINT

PART NUMBER: W17982-XPG-P-3ES

CUSTOMER APPROVAL

THIS DOCUMENT CONTAINS CONFIDENTIAL INFORMATION PROPRIETARY TO CONXALL CORPORATION. ANY REPRODUCTION, DISCLOSURE, OR USE OF THIS DOCUMENT /INFORMATION IS EXPRESSLY PROHIBITED UNLESS AUTHORIZED IN WRITING BY CONXALL CORPORATION.

APPROVED BY: _____
DATE: _____

A	MA	08-10-20	DRAWING CREATED PER PDR 18004-2
REV.	INIT.	DATE	DESCRIPTION
	MA	08-10-20	ORIG. DRAWN BY: DATE: MA 08-10-20
ALL INFORMATION ILLUSTRATED IS THE PROPERTY OF "CONXALL CORPORATION". UNAUTHORIZED DUPLICATION OR DISTRIBUTION OF THIS DOCUMENT IS PROHIBITED.			<p>601 E. WILDWOOD VILLA PARK, IL 60181</p>
ALL UNITS ARE IN FEET, INCHES, FRACTIONS OF INCHES AND DECIMALS.			
SCALE	SIZE	SHEET	TITLE:
NTS	B	1 OF 1	PANEL MOUNT ASSEMBLY (5-7) #26 PIN CONTACTS, SOLDER INSTA-CLICK™ MICRO-CON-X STANDARD PRODUCT
FILE:	DIRECTORY:	PART NUMBER:	CUSTOMER:
W17982-XPG-P-3ES	SLW	W17982-XPG-P-3ES	
		REV	A

DIMENSIONS IN BRACKETS [] ARE IN MILLIMETERS UNLESS INDICATED

RoHS COMPLIANT

CRITICAL CHARACTERISTIC FLAG PER SPEC. XXXX