

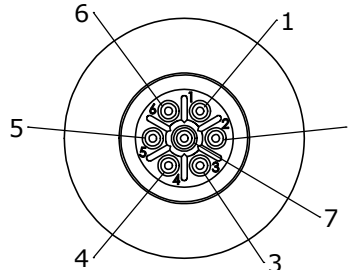
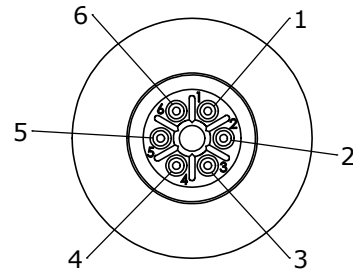
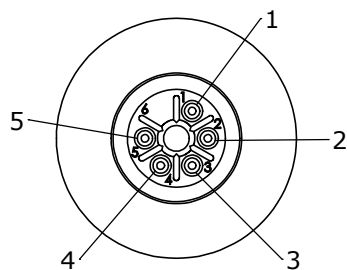
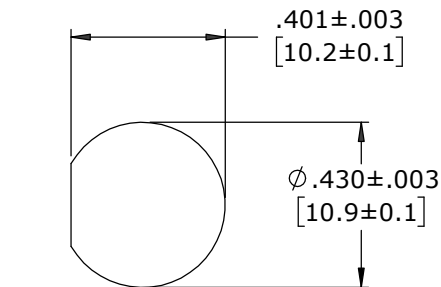
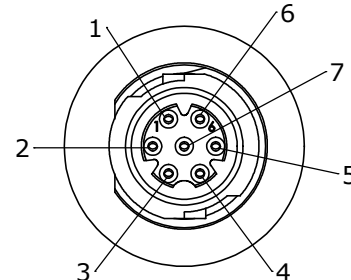
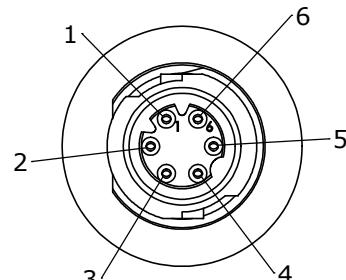
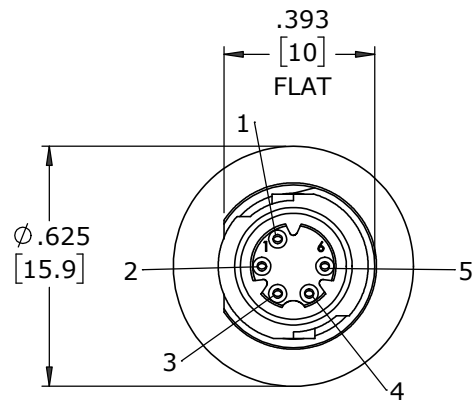
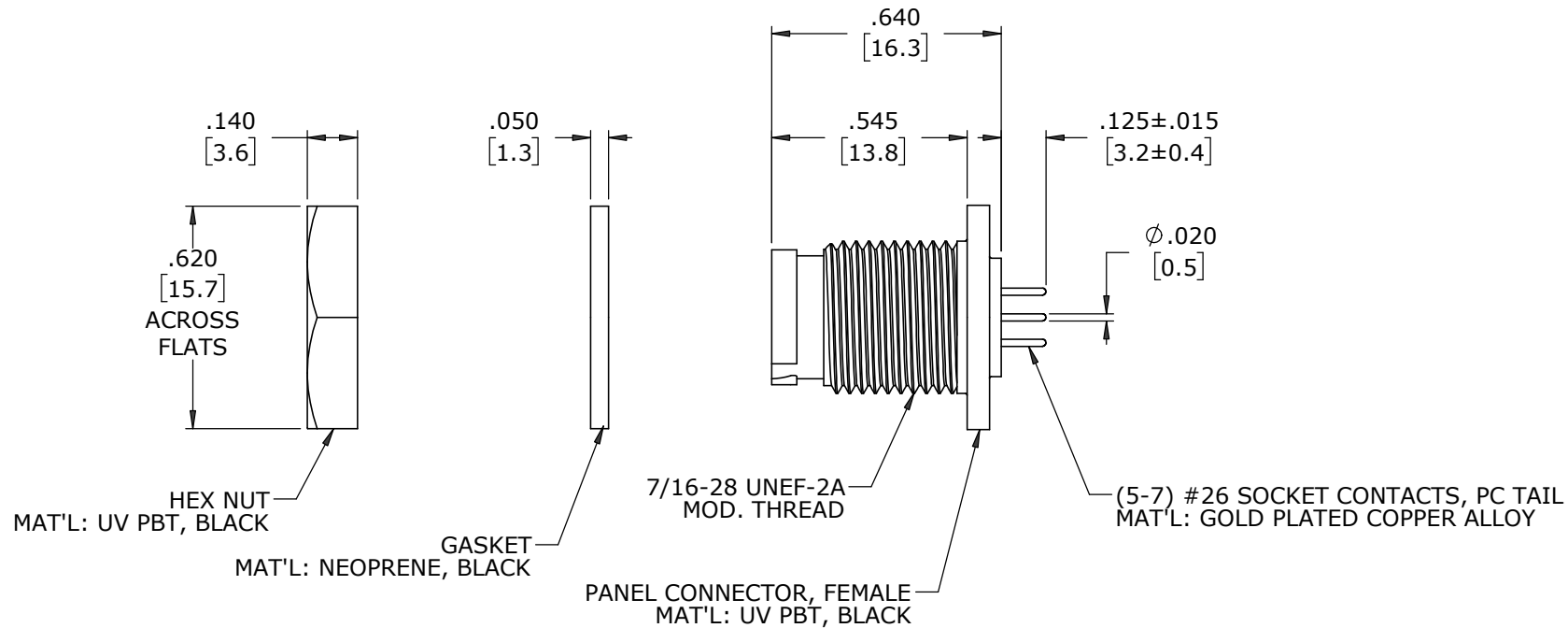
NOTES:

1. PANEL CONNECTORS TO BE PACKED IN PARTITION BOX, 100 PC PER BOX
HEX NUT AND GASKET TO BE BULK PACKED IN A SEPARATE BAG FROM PANEL ASSEMBLY PACKAGE.
a) BOX LABELED WITH CXA PART NUMBER, QUANTITY, LOT # AND DATE CODE AS SHOWN.
2. CONTACTS ARE ASSEMBLED INTO PANEL CONNECTOR.
3. SEE DRAWING HPMCSTD FOR HOLE PATTERN.
4. ALL DIMENSIONS ARE REFERENCE EXCEPT THOSE WITH A TOLERANCE

(B)

P/N: W17984-XSG-P-300
CONXALL
QTY:
Lot:
Date Code:

ASS'Y P/N	NO. OF CONTACTS	KEY STYLE
W17984-5SG-P-300	5 #26	A-KEY
W17984-6SG-P-300	6 #26	B-KEY
W17984-7SG-P-300	7 #26	A-KEY



CUSTOMER APPROVAL

THIS DOCUMENT CONTAINS CONFIDENTIAL INFORMATION PROPRIETARY TO CONXALL CORPORATION. ANY REPRODUCTION, DISCLOSURE, OR USE OF THIS DOCUMENT /INFORMATION IS EXPRESSLY PROHIBITED UNLESS AUTHORIZED IN WRITING BY CONXALL CORPORATION.

APPROVED BY: _____
DATE: _____

RoHS COMPLIANT

B	MA	11-09-20	NUMBER OF CONNECTORS PER BOX WAS 200 PER ECR 9548
A	MA	08-12-20	RELEASED PER PDR 18004-2
	JGK	8/15/19	DRAWING CREATED FOR PDR #18004
REV.	INIT.	DATE	DESCRIPTION
	JGK	8/15/19	ORIG. DRAWN BY: DATE: 8/15/19
			CHECKED BY:
			APPROVED BY:
			SCALE NTS SIZE B SHEET 1 OF 1
			FILE: W17984-XSG-P-300 DIRECTORY: SLW
			PART NUMBER: W17984-XSG-P-300
			REV B

conxall
601 E. WILDWOOD VILLA PARK, IL 60181

TITLE: PANEL MOUNT ASSEMBLY
(5-7) #26 SOCKET CONTACTS, PC TAIL
INSTA-CLICK™ MICRO-CON-X
STANDARD PRODUCT

DIMENSIONS IN BRACKETS [] ARE IN MILLIMETERS UNLESS INDICATED

ALL INFORMATION ILLUSTRATED IS THE PROPERTY OF "CONXALL CORPORATION". UNAUTHORIZED DUPLICATION OR DISTRIBUTION OF THIS DOCUMENT IS PROHIBITED.

ALL UNITS ARE IN FEET, INCHES, FRACTION OF INCHES AND DECIMALS.

— CRITICAL CHARACTERISTIC FLAG PER SPEC. XXXX