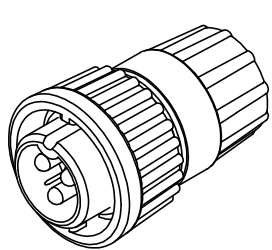
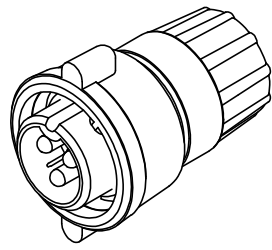


**NOTES:**

1. PARTS TO BE BULK PACKED.
2. CONTACTS ARE SUPPLIED LOOSE.
3. ALL DIMENSIONS ARE FOR REFERENCE ONLY EXCEPT WHERE NOTED WITH TOLERANCE.

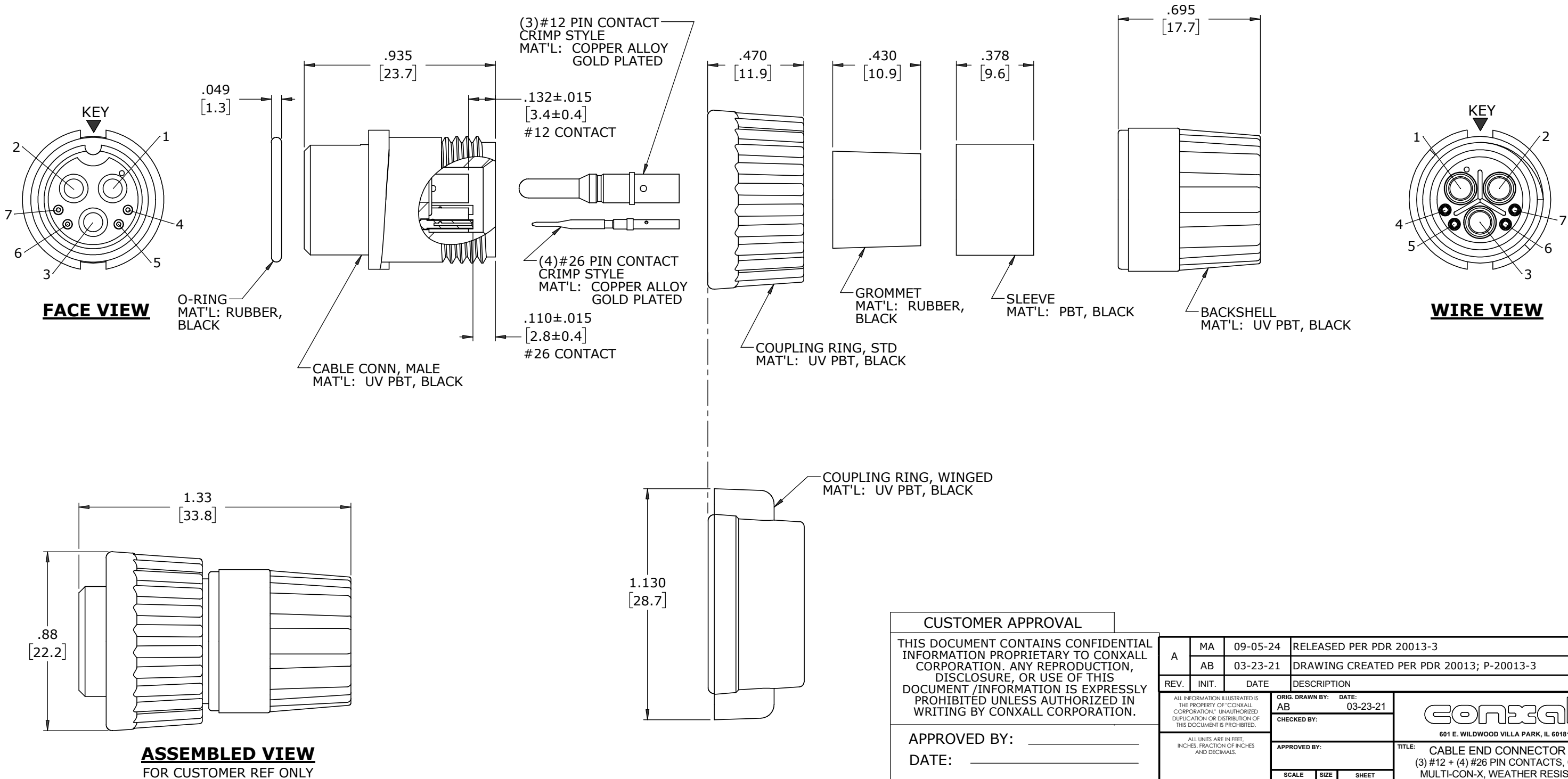


**STD COUPLING RING**  
P/N: W3B80-7PG-3XX



**WINGED COUPLING RING**  
P/N: W3B80-7PG-3XXW

ASSY P/N	GROMMET SIZE
W3B80-7PG-335	GROMMET ID .375 [9.5] FOR CABLE OD .350-.370 [8.9-9.4]
W3B80-7PG-335W	



DIMENSIONS IN BRACKET [ ] ARE METRIC.

**CUSTOMER APPROVAL**

THIS DOCUMENT CONTAINS CONFIDENTIAL INFORMATION PROPRIETARY TO CONXALL CORPORATION. ANY REPRODUCTION, DISCLOSURE, OR USE OF THIS DOCUMENT /INFORMATION IS EXPRESSLY PROHIBITED UNLESS AUTHORIZED IN WRITING BY CONXALL CORPORATION.

APPROVED BY: \_\_\_\_\_  
DATE: \_\_\_\_\_

**RoHS COMPLIANT**

A	MA	09-05-24	RELEASED PER PDR 20013-3	
	AB	03-23-21	DRAWING CREATED PER PDR 20013; P-20013-3	
REV.	INIT.	DATE	DESCRIPTION	
ALL INFORMATION ILLUSTRATED IS THE PROPERTY OF "CONXALL CORPORATION". UNAUTHORIZED DUPLICATION OR DISTRIBUTION OF THIS DOCUMENT IS PROHIBITED.			ORIG. DRAWN BY: AB DATE: 03-23-21	
ALL UNITS ARE IN FEET, INCHES, FRACTION OF INCHES AND DECIMALS.			CHECKED BY:	
			APPROVED BY:	
▷ = CRITICAL CHARACTERISTIC FLAG PER SPEC. XXXX			SCALE NTS	SIZE B
			SHEET 1 OF 1	
FILE: W3B80-7PG-3XX(W)			DIRECTORY: SLW	PART NUMBER: W3B80-7PG-3XX(W)
			TITLE: CABLE END CONNECTOR KIT (3) #12 + (4) #26 PIN CONTACTS, CRIMP MULTI-CON-X, WEATHER RESISTANT CUSTOMER: STANDARD PRODUCT	
			601 E. WILDWOOD VILLA PARK, IL 60181	
			conxall	
			REV A	

**conxall**  
601 E. WILDWOOD VILLA PARK, IL 60181

TITLE: CABLE END CONNECTOR KIT  
(3) #12 + (4) #26 PIN CONTACTS, CRIMP  
MULTI-CON-X, WEATHER RESISTANT  
CUSTOMER: STANDARD PRODUCT