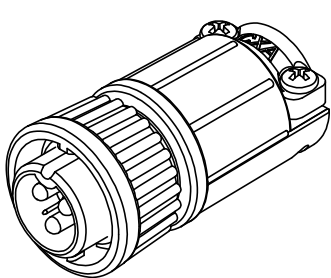
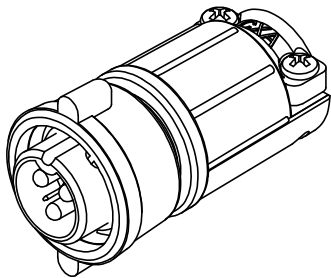


- NOTES:**
1. PARTS TO BE BULK PACKED.
  2. CONTACTS ARE SUPPLIED LOOSE.
  3. ALL DIMENSIONS ARE FOR REFERENCE ONLY EXCEPT WHERE NOTED WITH TOLERANCE.

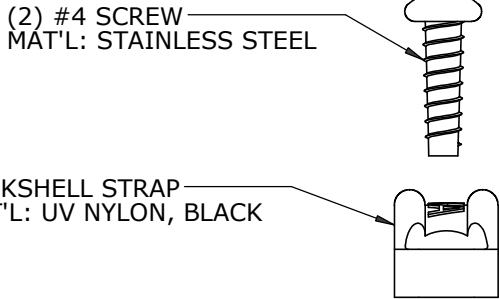


**STD COUPLING RING**  
P/N: W3B80-7PG-5XX



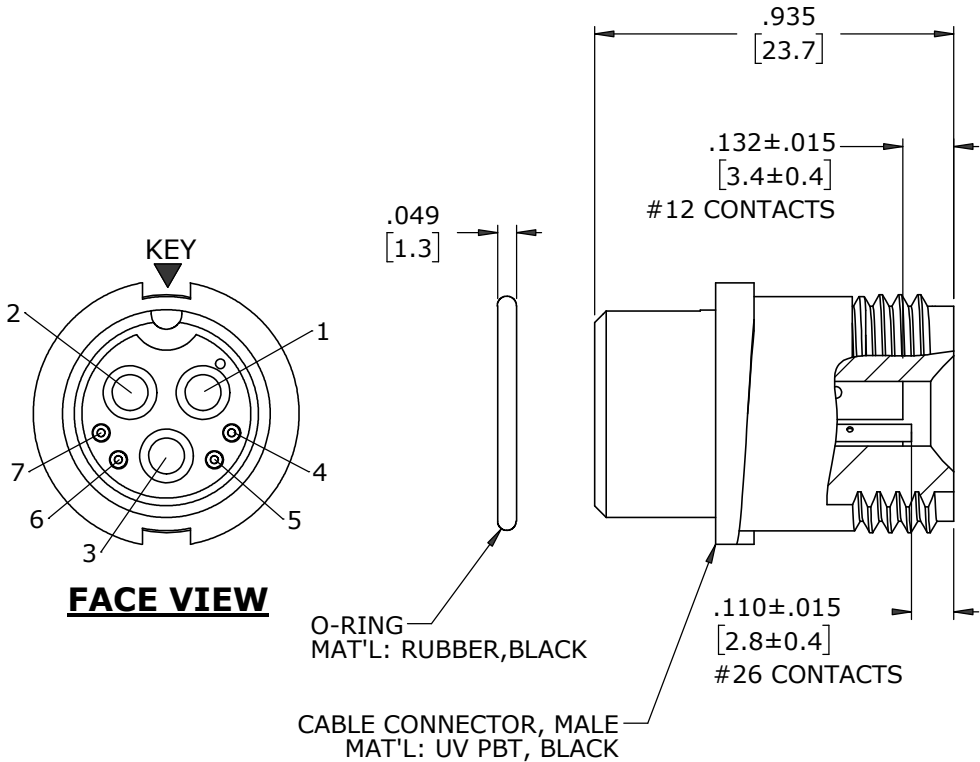
**WINGED COUPLING RING**  
P/N: W3B80-7PG-5XXW

ASSY P/N	GROMMET SIZE
W3B80-7PG-535	GROMMET ID .375 [9.5] FOR CABLE OD .350-.400 [8.9-10.2]
W3B80-7PG-535W	

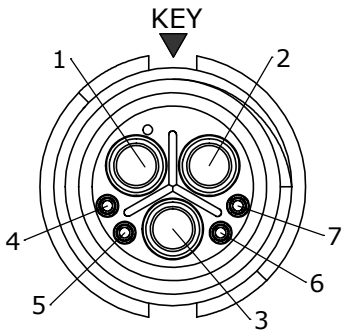
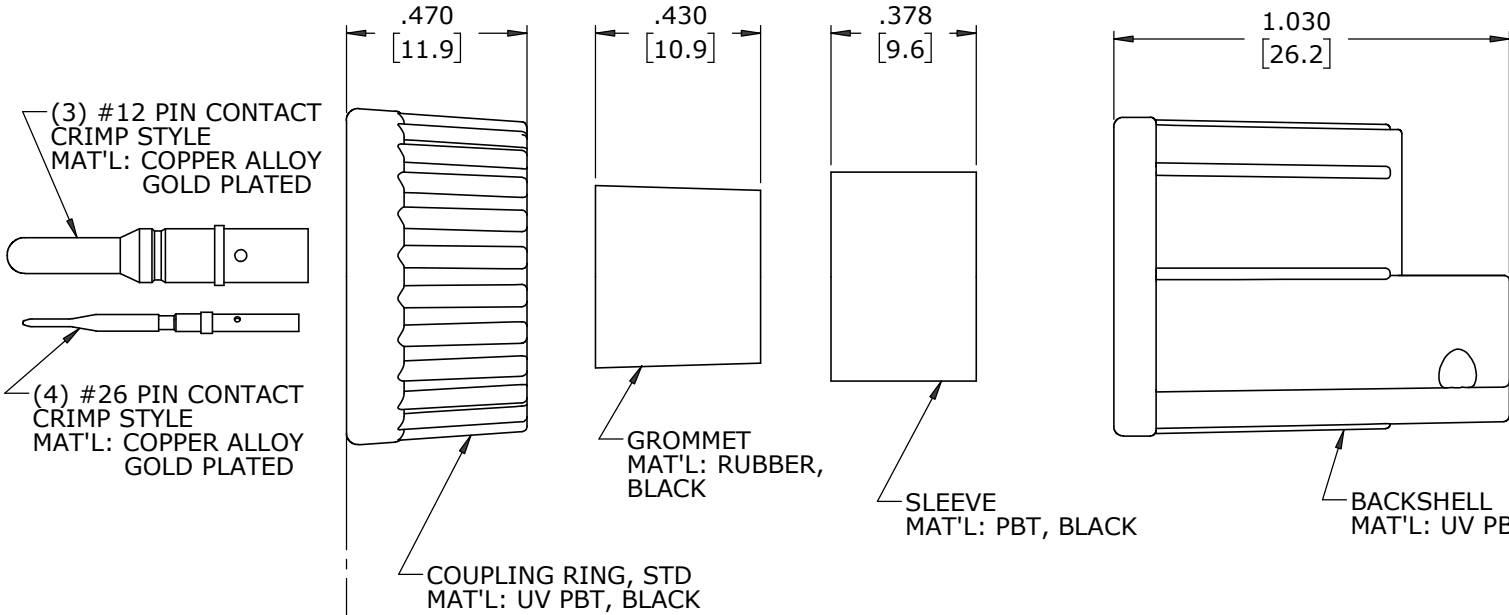


(2) #4 SCREW  
MAT'L: STAINLESS STEEL

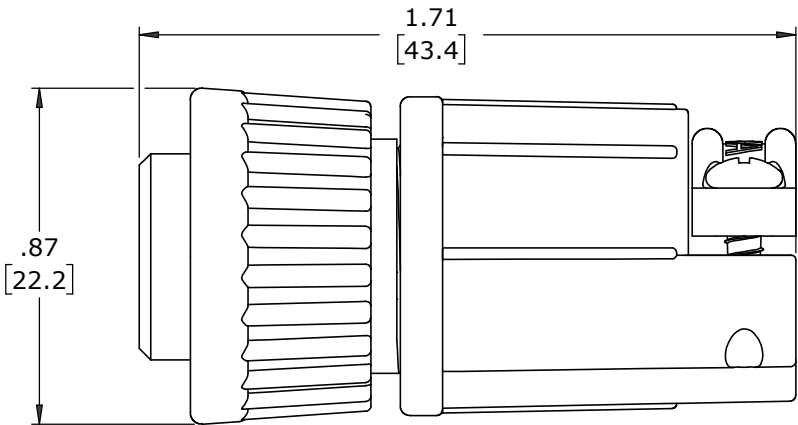
BACKSHELL STRAP  
MAT'L: UV NYLON, BLACK



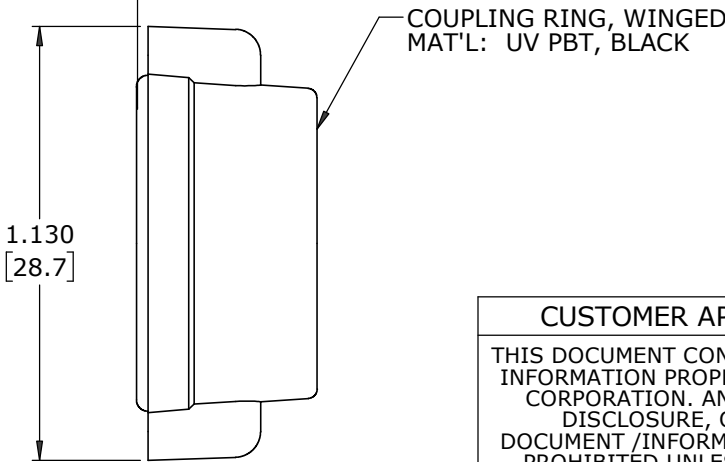
**FACE VIEW**



**WIRE VIEW**





**ASSEMBLED VIEW**  
FOR CUSTOMER REF ONLY



COUPLING RING, WINGED  
MAT'L: UV PBT, BLACK

DIMENSIONS IN BRACKET [ ] ARE METRIC.

CUSTOMER APPROVAL									
THIS DOCUMENT CONTAINS CONFIDENTIAL INFORMATION PROPRIETARY TO CONXALL CORPORATION. ANY REPRODUCTION, DISCLOSURE, OR USE OF THIS DOCUMENT /INFORMATION IS EXPRESSLY PROHIBITED UNLESS AUTHORIZED IN WRITING BY CONXALL CORPORATION.									
APPROVED BY: _____									
DATE: _____									
RoHS COMPLIANT									
A	MA	09-10-24	RELEASED PER PDR 20013-3						
	AB	03-23-21	DRAWING CREATED PER PDR 20013; P-20013-3						
REV.	INIT.	DATE	DESCRIPTION						
ALL INFORMATION ILLUSTRATED IS THE PROPERTY OF "CONXALL CORPORATION". UNAUTHORIZED DUPLICATION OR DISTRIBUTION OF THIS DOCUMENT IS PROHIBITED.			ORIG. DRAWN BY: AB		DATE: 03-23-21				
ALL UNITS ARE IN FEET, INCHES, FRACTION OF INCHES AND DECIMALS.			CHECKED BY:		601 E. WILDWOOD VILLA PARK, IL 60181				
 = CRITICAL CHARACTERISTIC FLAG PER SPEC. XXXX			APPROVED BY:		TITLE: CABLE END CONNECTOR KIT (3#12 + (4)#26 PIN CONTACTS, CRIMP MULTI-CON-X, WEATHER RESISTANT STANDARD PRODUCT				
			SCALE NTS	SIZE B	SHEET 1 OF 1		CUSTOMER: STANDARD PRODUCT		
			FILE: W3B80-7PG-5XX(W)		DIRECTORY: SLW		PART NUMBER: W3B80-7PG-5XX(W)		
							REV A		

RoHS COMPLIANT

▷ = CRITICAL CHARACTERISTIC FLAG PER SPEC. XXXX