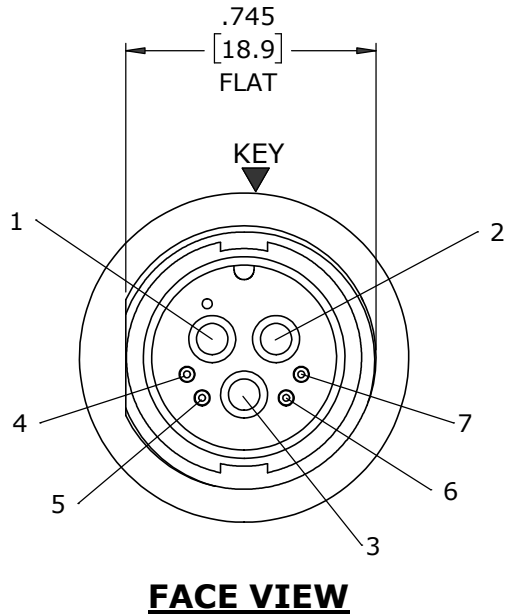
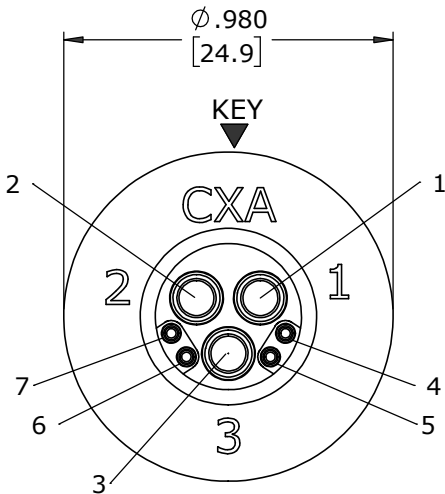
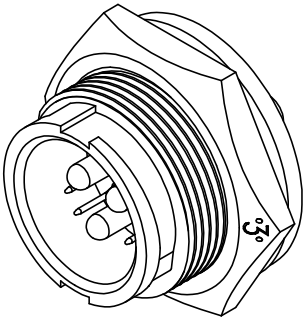
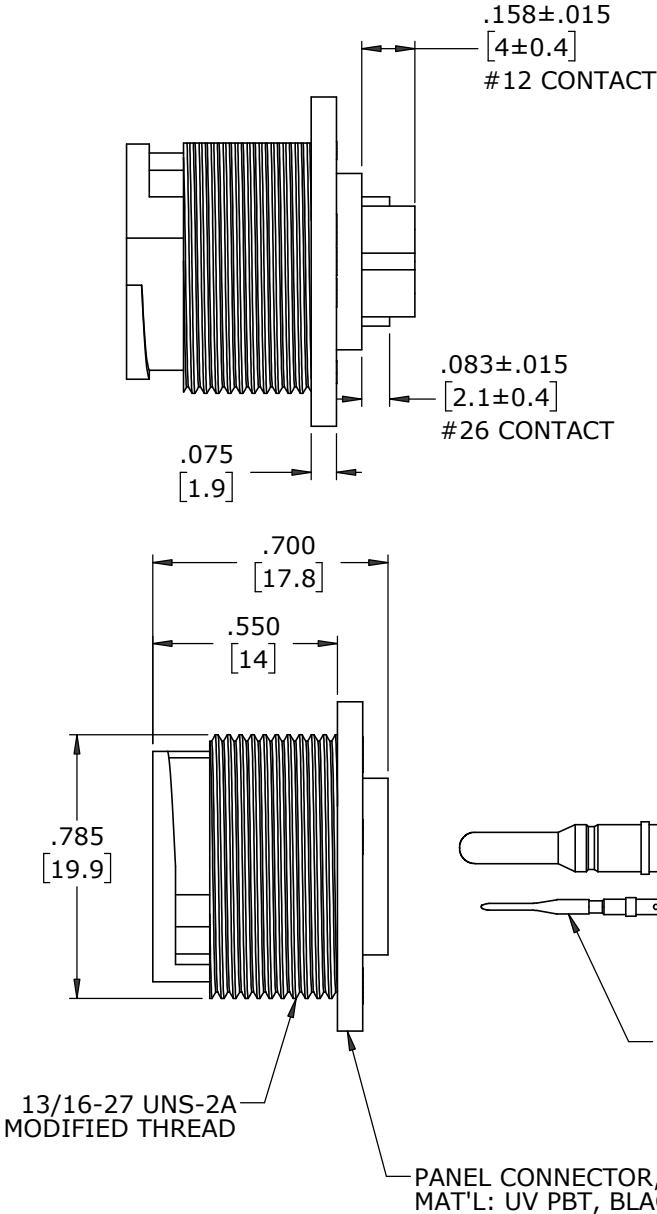
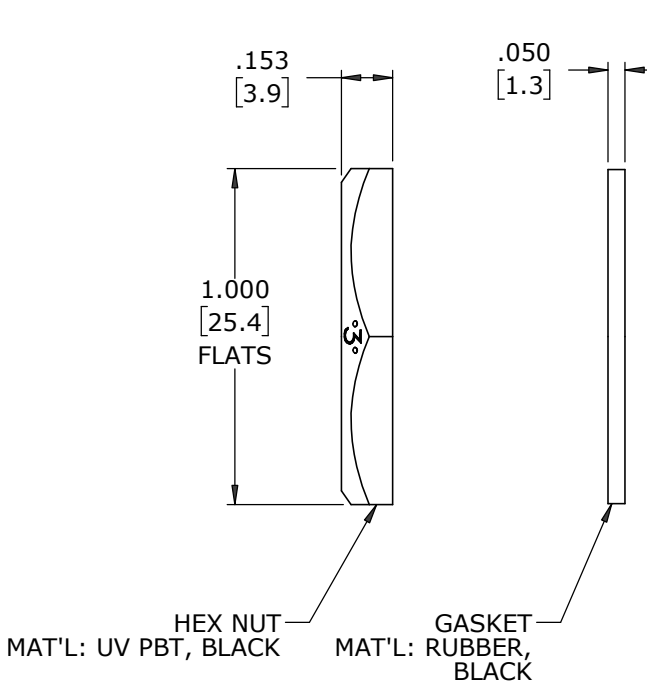


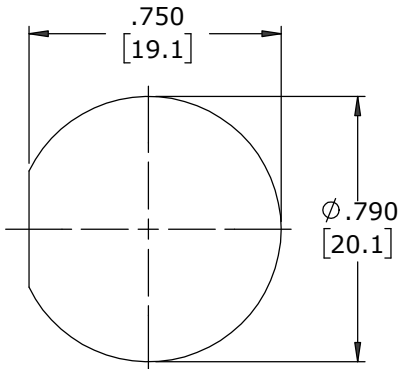
NOTES:
1. PARTS TO BE BULK PACKED.
2. CONTACTS ARE SUPPLIED LOOSE.
3. ALL DIMENSIONS ARE FOR REFERENCE ONLY EXCEPT WHERE NOTED WITH TOLERANCE.



FACE VIEW



WIRE VIEW



**RECOMMENDED
PANEL CUT-OUT**
TOLERANCE ±.003 [0.1]

DIMENSIONS IN BRACKETS [] ARE METRIC.

CUSTOMER APPROVAL			
THIS DOCUMENT CONTAINS CONFIDENTIAL INFORMATION PROPRIETARY TO CONXALL CORPORATION. ANY REPRODUCTION, DISCLOSURE, OR USE OF THIS DOCUMENT /INFORMATION IS EXPRESSLY PROHIBITED UNLESS AUTHORIZED IN WRITING BY CONXALL CORPORATION.			
APPROVED BY: _____			
DATE: _____			

RoHS COMPLIANT

A	MA	09-11-24	RELEASED PER PDR 20013-4	
	AB	03-18-21	CREATED PER PDR 20013; P-20013-4	
REV.	INIT.	DATE	DESCRIPTION	
ALL INFORMATION ILLUSTRATED IS THE PROPERTY OF "CONXALL CORPORATION". UNAUTHORIZED DUPLICATION OR DISTRIBUTION OF THIS DOCUMENT IS PROHIBITED.			ORIG. DRAWN BY: AB	DATE: 03-18-21
ALL UNITS ARE IN FEET, INCHES, FRACTION OF INCHES AND DECIMALS. UNLESS OTHERWISE SPECIFIED TOLERANCES: 3 PLACE DECIMALS ±.005 ANGLES ±1° FRACTIONS ±1/16 = CRITICAL CHARACTERISTIC FLAG PER SPEC. XXXX.			CHECKED BY:	
APPROVED BY:			APPROVED BY:	
SCALE	SIZE	SHEET	TITLE:	
NTS	B	1 OF 1	PANEL CONNECTOR KIT (3) #12 + (4) #26 PIN CONTACTS, CRIMP MULTI-CON-X, WEATHER RESISTANT STANDARD PRODUCT	
FILE:	DIRECTORY:	PART NUMBER:	CUSTOMER:	
W4B80-7PG-300	SLW	W4B80-7PG-300	W4B80-7PG-300	
				REV A